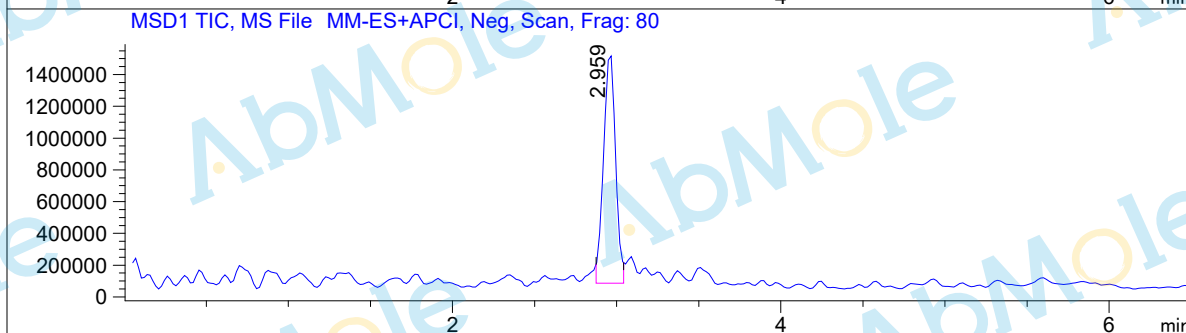
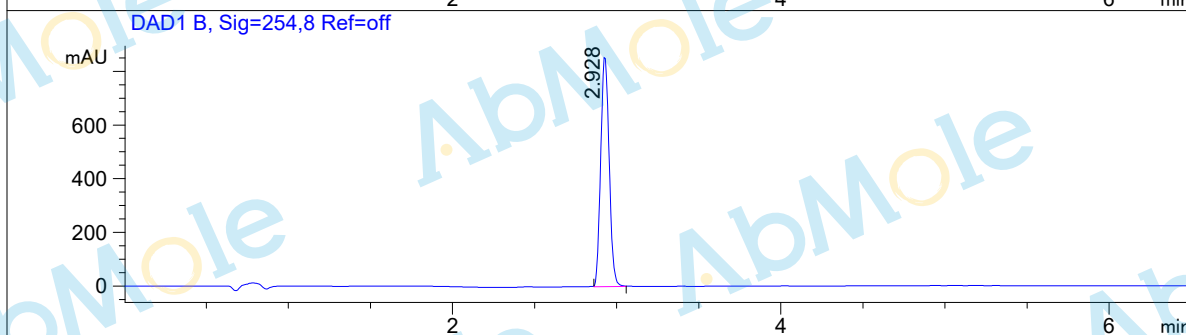
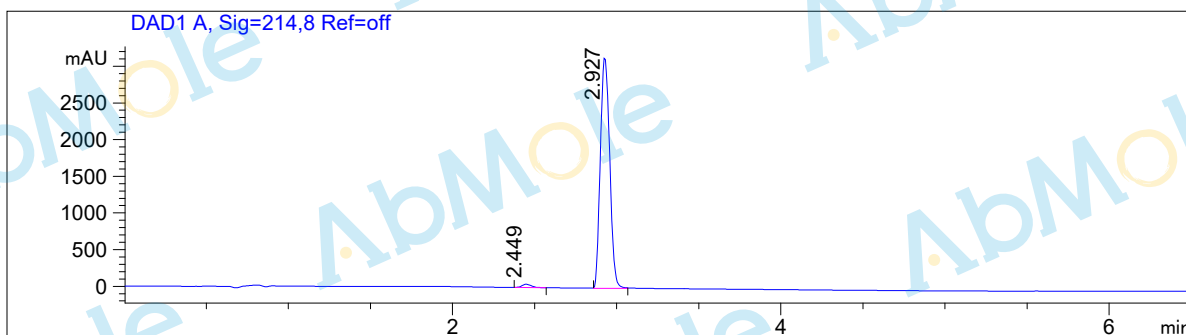


LC-MS Report

Sample Name : NPPB-01
Data File : D:\DATA-LCMS-13\2019\12-19\20\6\NPPB-01.D
Injection Date : Fri, 20. Dec. 2019 Inj. Vol. : 5ul
Acq Operator : LCMS-13 Location : Vial 44
Acq. Method : D:\data-lcms-13\2019\12-19\20\6\N-05-95.M
Method Info. : column:C18;column size:4.6*50mm ;mobile phase:B (ACN)
A(0.02%NH4Ac); gradient(B%)!as Acq.Method above



Integration Results

Signal 1: DAD1 A, Sig=214,8 Ref=off

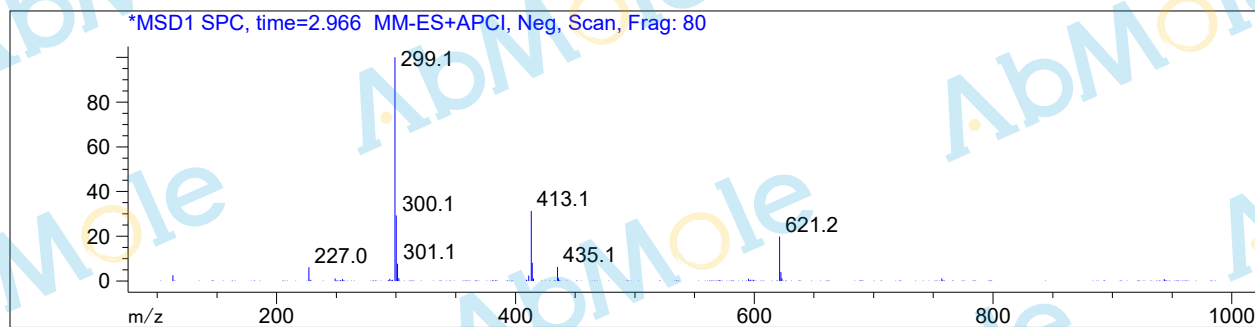
#	R.T.	Type	Height	Height%	Width	Area	Area %
1	2.449	BB	44.799	1.398	0.065	178.966	1.417
2	2.927	MM	3160.264	98.602	0.066	12450.157	98.583

Signal 2: DAD1 B, Sig=254,8 Ref=off

#	R.T.	Type	Height	Height%	Width	Area	Area %
1	2.928	BB	859.710	100.000	0.057	3057.661	100.000

Signal 3: MSD1 TIC, MS File

#	R.T.	Type	Height	Height%	Width	Area	Area %
1	2.959	FM	1.483e+006	100.000	0.083	7.357e+006	100.000



*** End of Report ***