

LCMS Report

Sample Name : Motolimod (VTX-2337)-02
Data File : D:\DATA-LCMS-13\2020\04-20\10\7\926927-61-9.D
Injection Date : Sat, 11. Apr. 2020 Inj. Vol. : 2ul
Acq Operator : LCMS-13 Location : Vial 42
Acq. Method : D:\data-lcms-13\2020\04-20\10\7\P-05-95.M
Method Info. : column:Xbridge C18 5um 4.6*30mm ;mobile phase:B (ACN)
A(0.02%NH4Ac); gradient(B%)!as Acq.Method above



Integration Results

Signal 1: DAD1 A, Sig=214,8 Ref=off

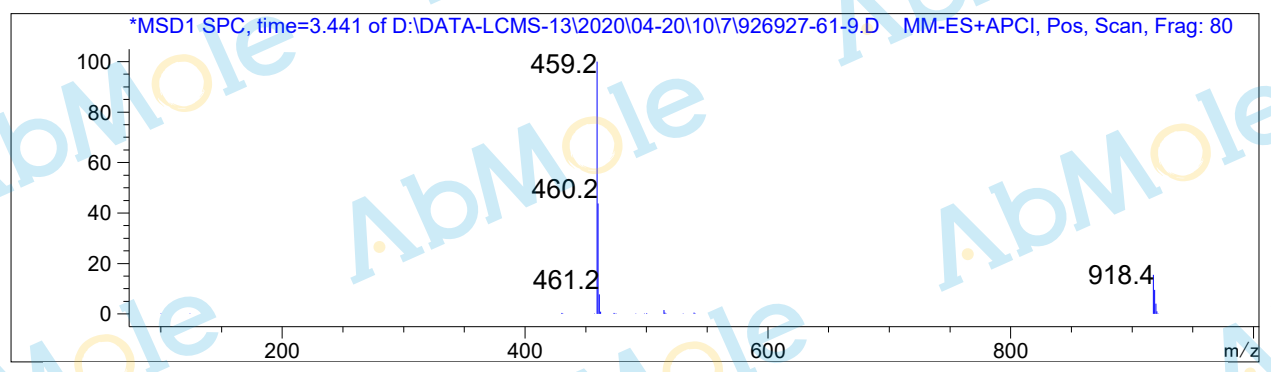
#	R.T.	Type	Height	Height%	Width	Area	Area %
1	3.421	MF	1292.644	98.987	0.051	3945.491	98.438
2	3.584	FM	2.862	0.219	0.054	9.261	0.231
3	4.261	BB	3.695	0.283	0.102	26.457	0.660
4	4.591	MF	6.674	0.511	0.067	26.870	0.670

Signal 2: DAD1 B, Sig=254,8 Ref=off

#	R.T.	Type	Height	Height%	Width	Area	Area %
1	3.421	MF	1616.537	99.770	0.051	4940.739	99.765
2	3.583	FM	3.719	0.230	0.052	11.639	0.235

Signal 3: MSD1 TIC, MS File

#	R.T.	Type	Height	Height%	Width	Area	Area %
1	3.444	BB	392610.813	100.000	0.070	1.835e+006	100.000



*** End of Report ***