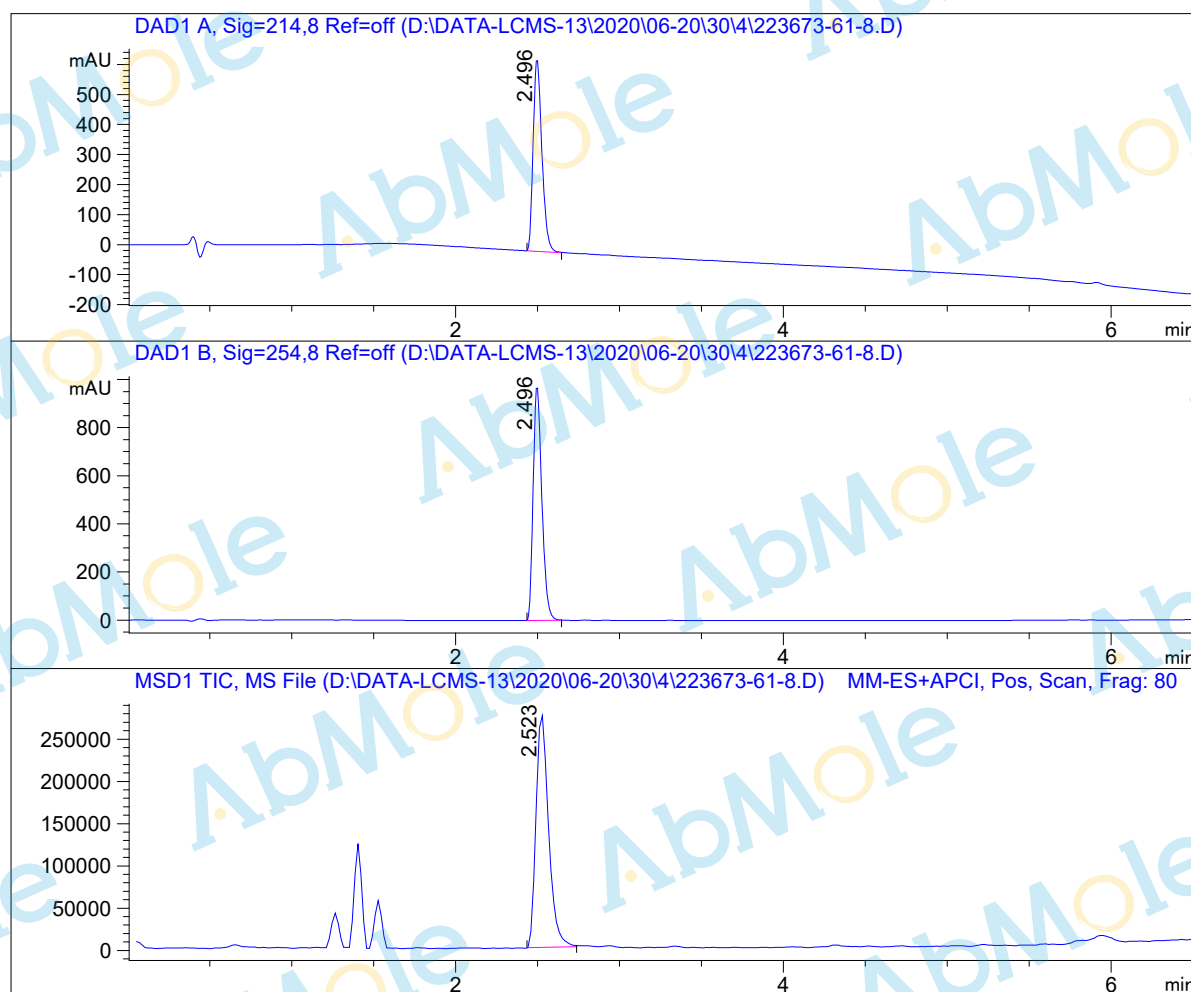


LCMS Report

Sample Name : Mirabegron-02
 Data File : D:\DATA-LCMS-13\2020\06-20\30\4\223673-61-8.D
 Injection Date : Tue, 30. Jun. 2020 Inj. Vol. : 2ul
 Acq Operator : LCMS-13 Location : Vial 41
 Acq. Method : D:\data-lcms-13\2020\06-20\30\4\P-05-60-TFA.M
 Method Info. : column:Xbridge C18 5um 4.6*50mm ;mobile phase:B (ACN)
 A(0.05%TFA); gradient(B%)!as Acq.Method above



Integration Results

Signal 1: DAD1 A, Sig=214,8 Ref=off

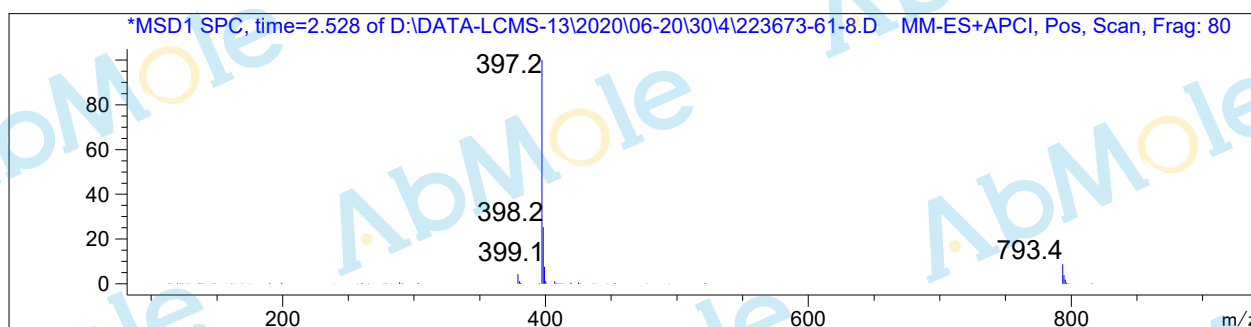
#	R.T.	Type	Height	Height%	Width	Area	Area %
1	2.496	BB	640.567	100.000	0.057	2372.029	100.000

Signal 2: DAD1 B, Sig=254,8 Ref=off

#	R.T.	Type	Height	Height%	Width	Area	Area %
1	2.496	BB	974.063	100.000	0.057	3593.437	100.000

Signal 3: MSD1 TIC, MS File

#	R.T.	Type	Height	Height%	Width	Area	Area %
1	2.523	BB	276863.563	100.000	0.083	1.476e+006	100.000



*** End of Report ***