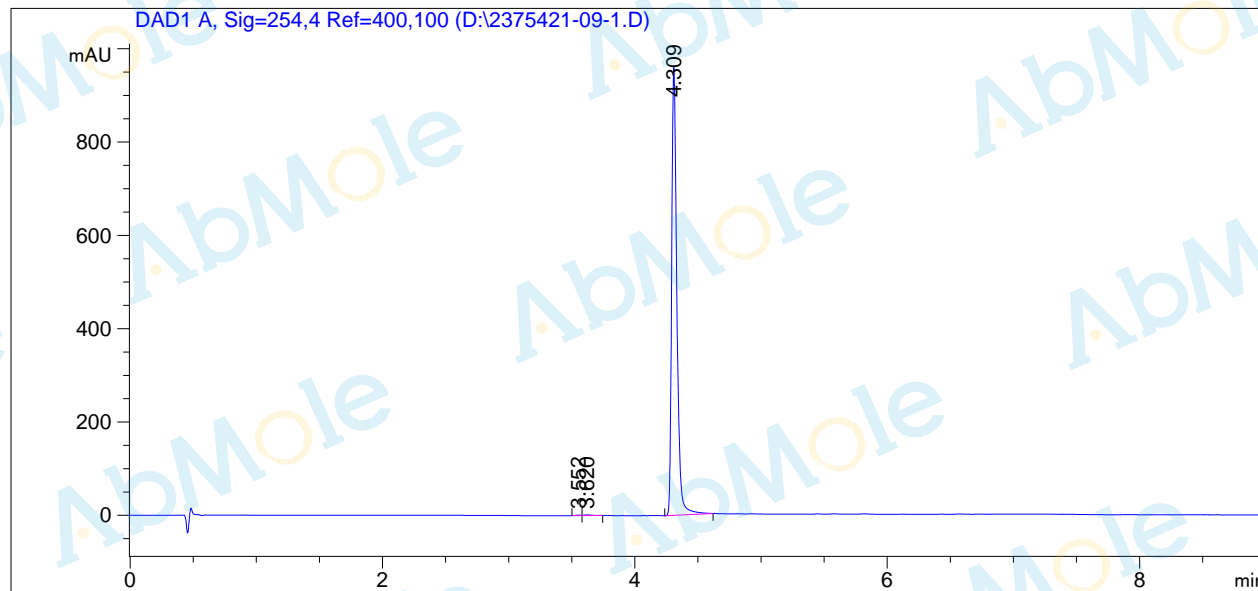


=====
Acq. Operator : Seq. Line : 3
Acq. Instrument : Instrument 1 Location : Vial 42
 Inj : 1
 Inj Volume : 3.0 µl

Acq. Method : D:
Analysis Method : D:\CHEM32\1\1.M
Sample Info : [A = ACN, B = acid-1/H2O] 10-95% A/B 5 min, 95% A/B 4 min; Athena C18 (3 µm, 2
 .1 mm * 100 mm); Flow: 0.46 ml/min, T = 25
Additional Info : Peak(s) manually integrated
=====



=====
Area Percent Report
=====

Sorted By : Signal
Multiplier : 1.0000
Dilution : 1.0000
Use Multiplier & Dilution Factor with ISTDs

Signal 1: DAD1 A, Sig=254,4 Ref=400,100

Peak #	RetTime [min]	Type	Width [min]	Area [mAU*s]	Height [mAU]	Area %
1	3.552	BV	0.0443	3.15849	1.02893	0.1145
2	3.620	VB	0.0580	6.11334	1.34565	0.2216
3	4.309	BB	0.0429	2749.77979	960.33545	99.6639
Totals :				2759.05162	962.71003	

=====
*** End of Report ***
=====