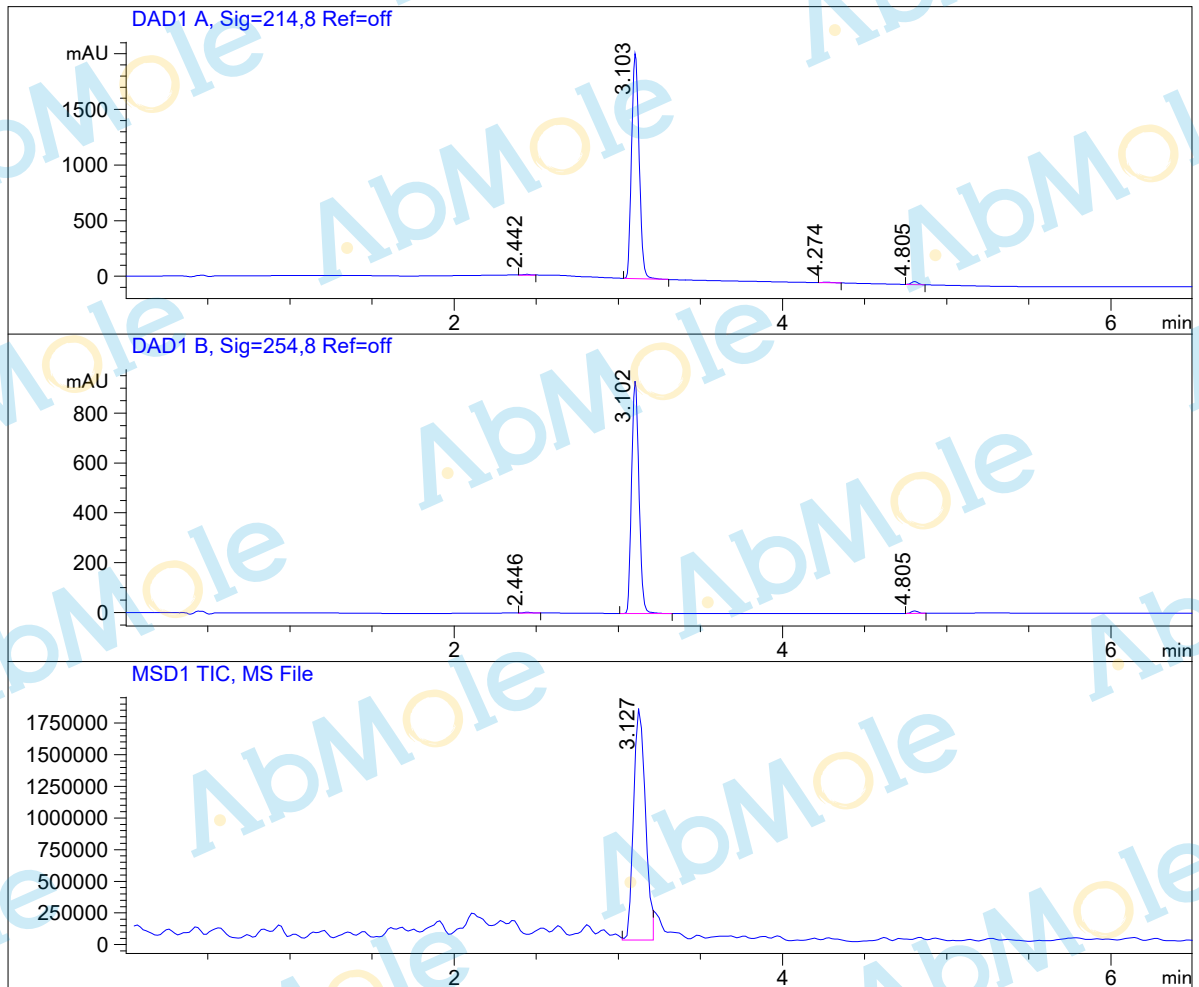


LCMS Report

Sample Name : M9476-Elafibranor-01
Data File : D:\DATA-LCMS-13\923978-27-2.D
Acq Operator : LCMS-13
Acq. Method : D:\data-lcms-13\N-05-95.M
Method Info. : column:Xbridge C18 5um 4.6*30mm ;mobile phase:B (ACN)
A(0.02%NH4Ac); gradient(B%)!as Acq.Method above
Inj. Vol. : 3ul
Location : Vial 72



Integration Results

Signal 1: DAD1 A, Sig=214,8 Ref=off

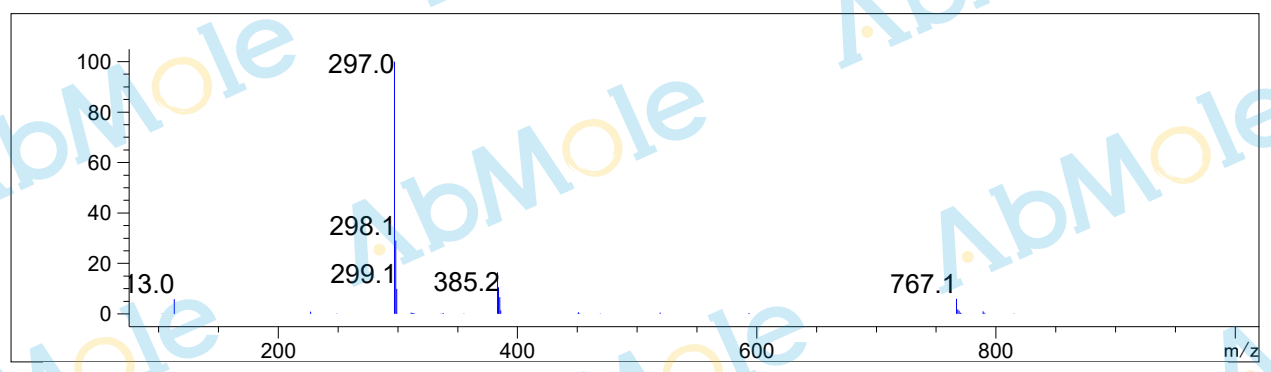
#	R.T.	Type	Height	Height%	Width	Area	Area %
1	2.442	MF	7.025	0.338	0.057	24.086	0.364
2	3.103	MM	2037.453	98.161	0.053	6493.154	98.178
3	4.274	MM	4.322	0.208	0.071	18.510	0.280
4	4.805	MF	26.821	1.292	0.048	77.898	1.178

Signal 2: DAD1 B, Sig=254,8 Ref=off

#	R.T.	Type	Height	Height%	Width	Area	Area %
1	2.446	BB	3.022	0.318	0.052	10.259	0.346
2	3.102	MM	938.667	98.635	0.052	2921.816	98.682
3	4.805	MF	9.970	1.048	0.048	28.756	0.971

Signal 3: MSD1 TIC, MS File

#	R.T.	Type	Height	Height%	Width	Area	Area %
1	3.127	MF	1.853e+006	100.000	0.082	9.167e+006	100.000



*** End of Report ***