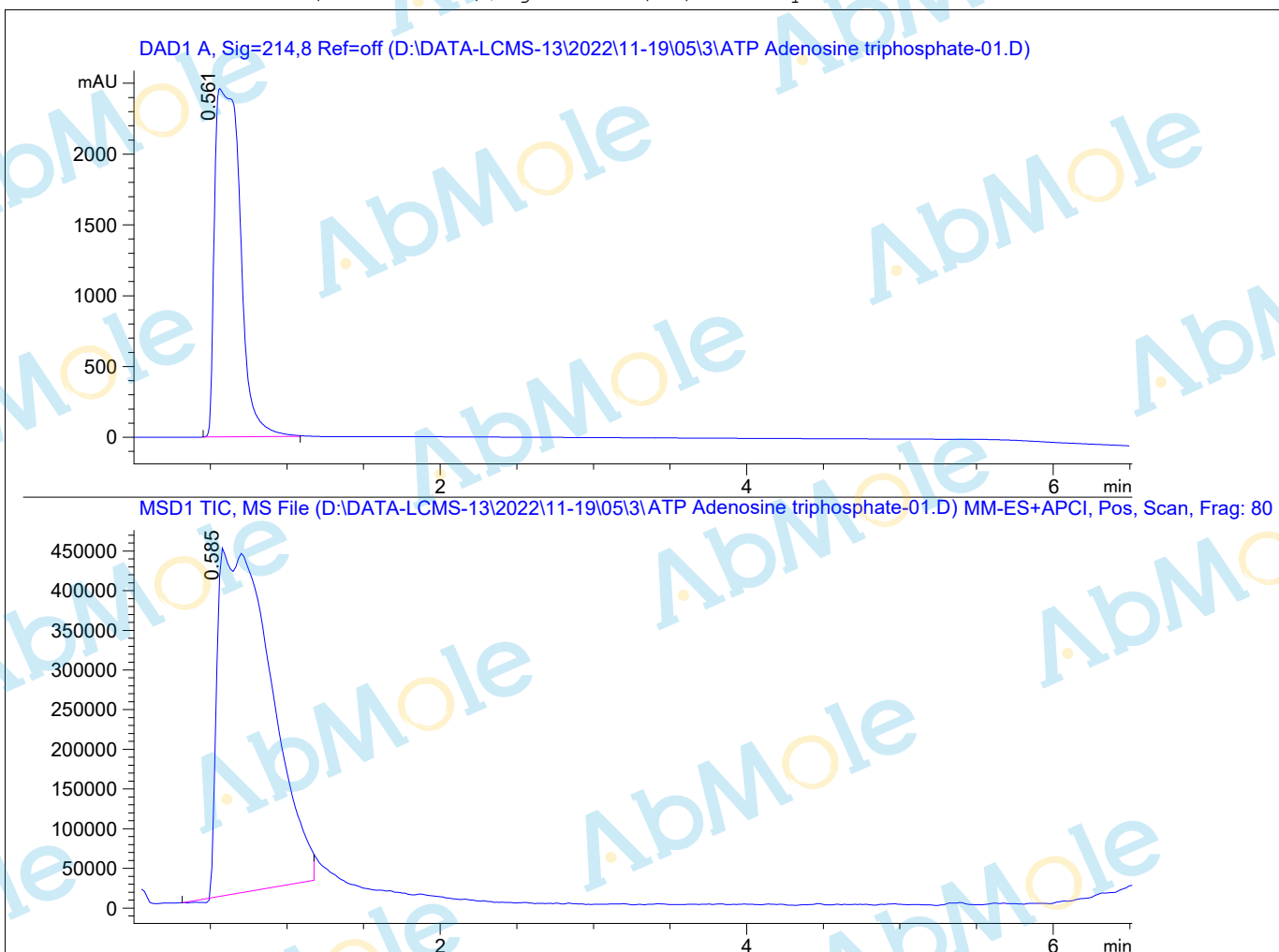


LC-MS Report

Sample Name : M9072-ATP-01
Data File : D:\DATA-LCMS-13\2022\11-19\05\3\ATP.D
Injection Date : Sat, 5. Nov. 2022 Inj. Vol. : 5ul
Acq Operator : LCMS-13 Location : Vial 67
Acq. Method : D:\data-lcms-13\2022\11-19\05\3\P-02-20.M
Method Info. : column:C18;column size:4.6*50mm ;mobile phase:B (ACN)
A(0.02%NH4Ac); gradient(B%)!as Acq.Method above



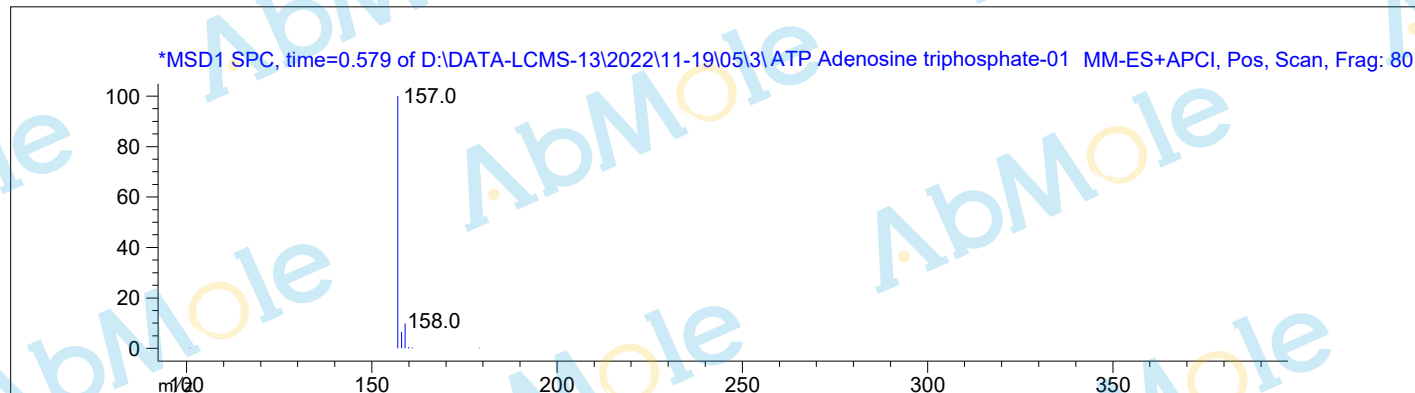
Integration Results

Signal 1: DAD1 A, Sig=214,8 Ref=off

#	R.T.	Type	Height	Height%	Width	Area	Area %
1	0.561	BB	2460.476	100.000	0.151	28492.799	100.000

Signal 2: MSD1 TIC, MS File

#	R.T.	Type	Height	Height%	Width	Area	Area %
1	0.585	BB	440076.125	100.000	0.300	1.051e+007	100.000



*** End of Report ***