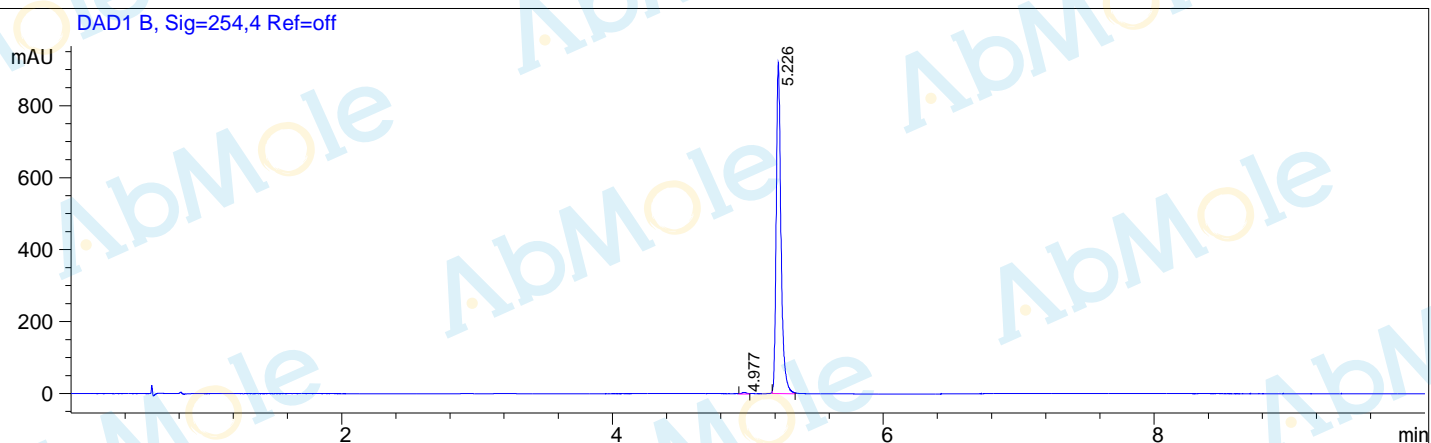


Sample Name : M9051-FCCP-02
Acq. Operator : R
Spec. Reported : Integration

Location : P1-F-02
Inj : 0
Inj Volume : 4 ul



Integration Results for DAD1 B, Sig=254,4 Ref=off

RetTim	Width	Area	Height	Area%
4.98	0.03	6.84	4.50	0.60
5.23	0.12	1135.60	912.81	99.40