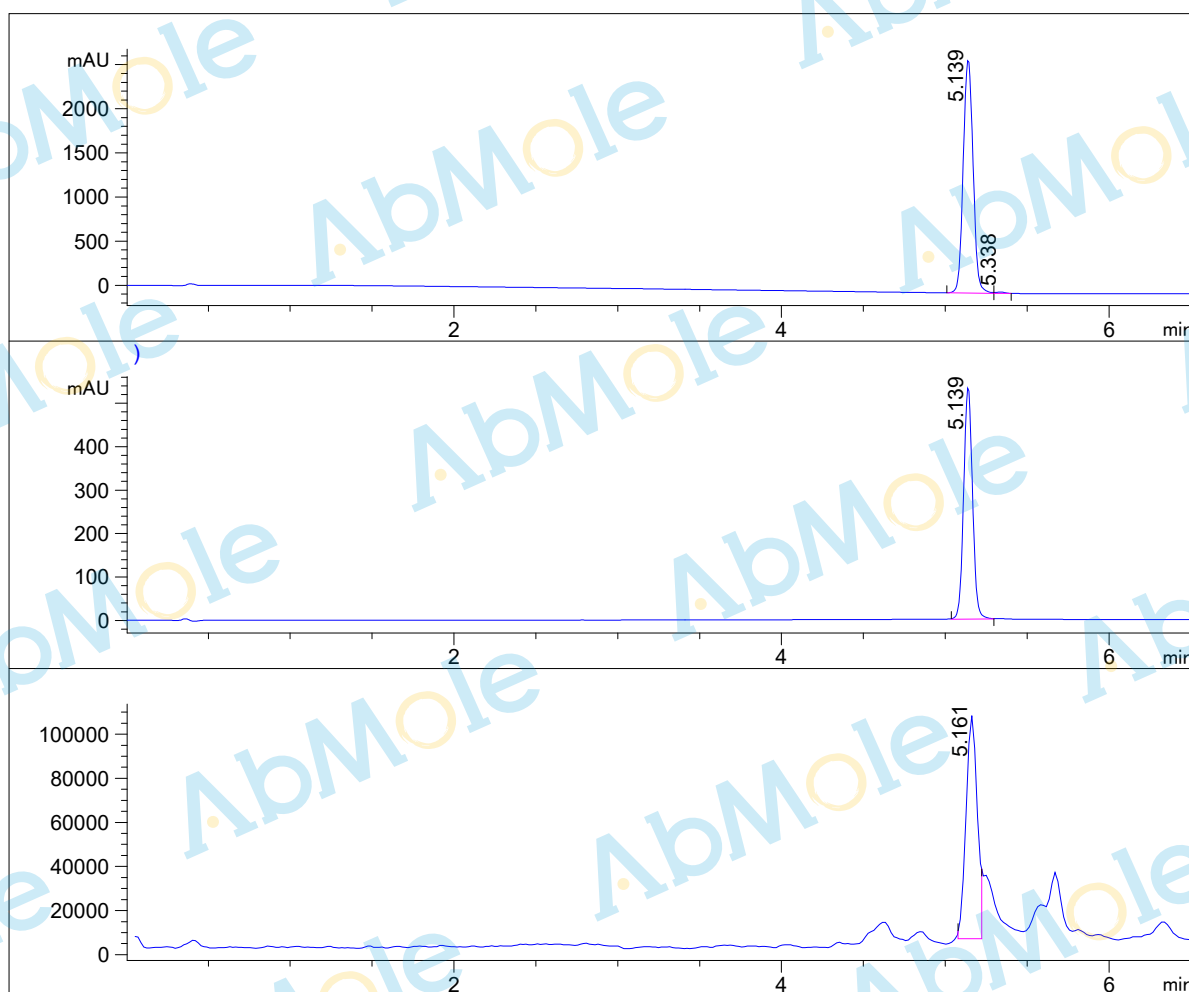


LCMS Report

Sample Name : Ginkgolic Acid-01
Data File : D:\DATA-LCMS-13
Injection Date : Sat, 11. Apr. 2022 Inj. Vol. : 2ul
Acq Operator : LCMS-13 Location : Vial 41
Acq. Method : D:\data-lcms-13\2022\04-20\10\7\P-50-95-TFA.M
Method Info. : column:Xbridge C18 5um 4.6*50mm ;mobile phase:B (ACN)
A(0.05%TFA) ; gradient (B%)!as Acq.Method above



Integration Results

Signal 1: DAD1 A, Sig=214,8 Ref=off

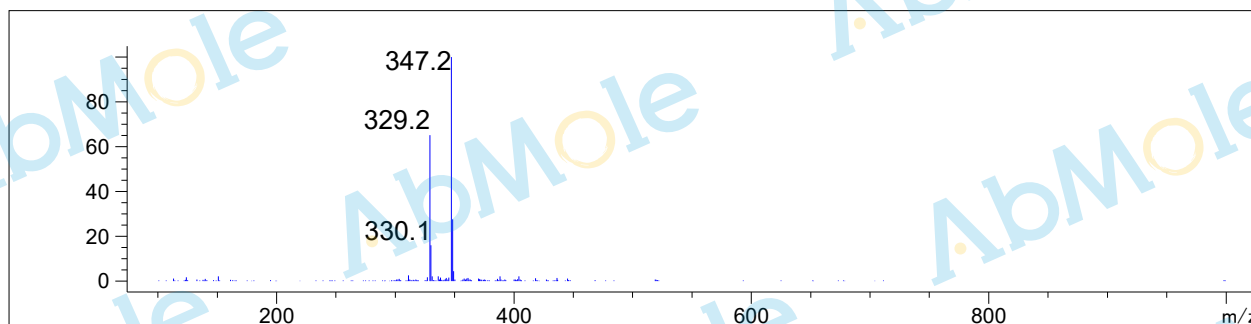
#	R.T.	Type	Height	Height%	Width	Area	Area %
1	5.139	BV	2643.429	99.440	0.067	11051.766	99.511
2	5.338	MF	14.892	0.560	0.061	54.294	0.489

Signal 2: DAD1 B, Sig=254,8 Ref=off

#	R.T.	Type	Height	Height%	Width	Area	Area %
1	5.139	BB	533.925	100.000	0.058	2011.464	100.000

Signal 3: MSD1 TIC, MS File

#	R.T.	Type	Height	Height%	Width	Area	Area %
1	5.161	FM	102432.641	100.000	0.080	489671.031	100.000



*** End of Report ***