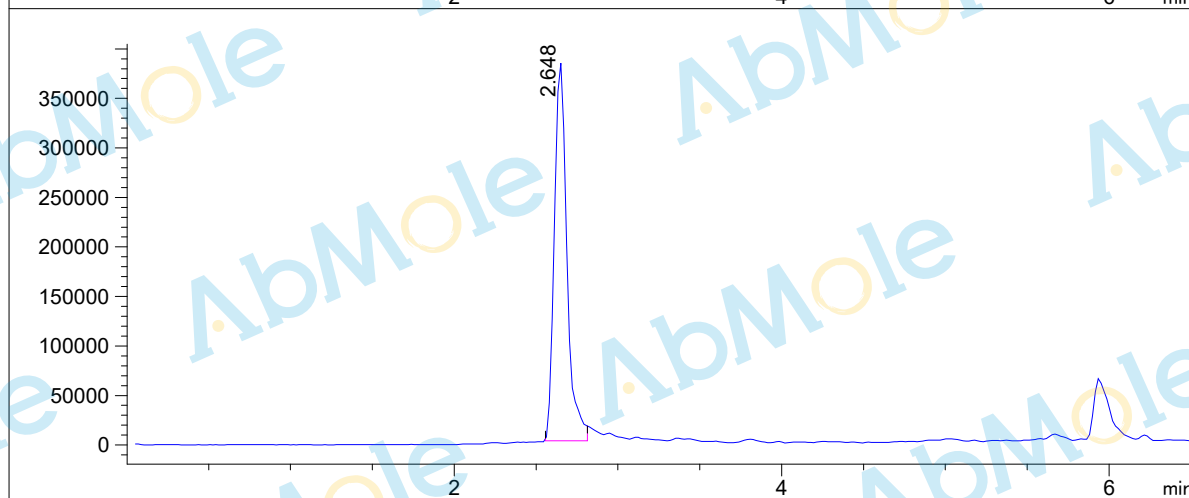
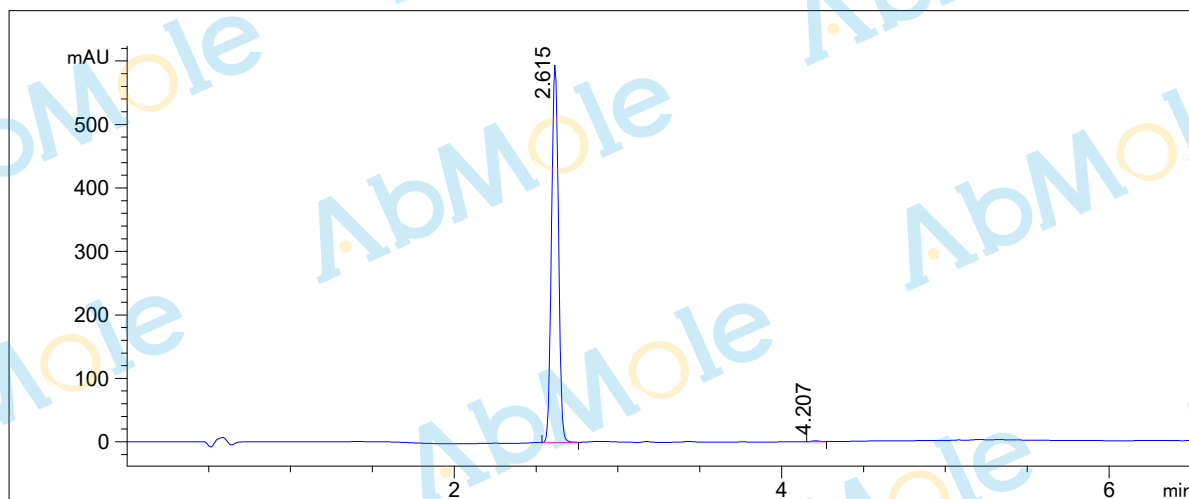


LCMS Report

Sample Name : M6340-3-PO-01
Acq Operator : LCMS-13
Inj. Vol. : 2ul
Location : Vial 53
Method Info. : column:Xbridge C18 5um 4.6*50mm ;mobile phase:B (ACN)
A(0.02%NH4Ac); gradient(B%)!as Acq.Method above



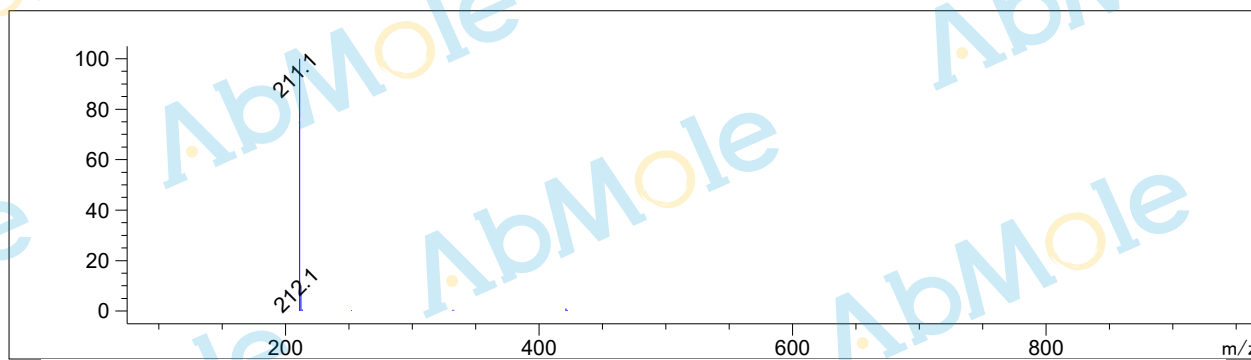
Integration Results

Signal 1: DAD1 B, Sig=254,8 Ref=off

#	R.T.	Type	Height	Height%	Width	Area	Area %
1	2.615	MM	597.622	99.731	0.049	1766.719	99.670
2	4.207	MM	1.609	0.269	0.061	5.850	0.330

Signal 2: MSD1 TIC, MS File

#	R.T.	Type	Height	Height%	Width	Area	Area %
1	2.648	MM	387198.344	100.000	0.088	2.048e+006	100.000



*** End of Report ***