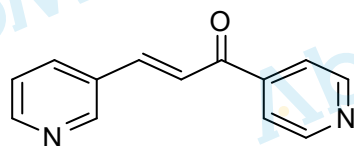


9.056
9.051
8.876
8.872
8.865
8.861
8.655
8.651
8.643
8.639
8.397
8.392
8.388
8.377
8.372
8.368
8.060
8.028
8.024
8.020
8.018
8.013
7.860
7.821
7.538
7.526
7.518
7.506

3.375
2.517
2.513
2.509
2.504
2.500

-0.001

Chemical Formula: C₁₃H₁₀N₂O
Molecular Weight: 210.24



CAS: 18550-98-6

DMSO-d₆, 400 MHz

M6340-3-PO-01

1.01
2.02
1.02
1.02
3.12
1.04
1.00

10 8 6 4 2 0 PPM