

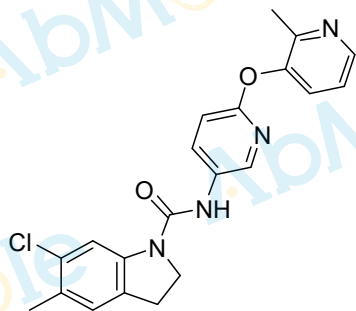
8.716
8.328
8.324
8.316
8.313
8.211
8.205
8.052
8.046
8.030
8.024
7.860
7.500
7.496
7.479
7.476
7.314
7.302
7.294
7.282
7.165
7.103
7.081

4.145
4.124
4.102

3.337
3.165
3.144
3.123
2.512
2.507
2.503
2.498
2.494
2.311
2.248

-0.000

Chemical Formula: C₂₁H₁₉ClN₄O₂
Molecular Weight: 394.86



CAS: 181632-25-7

DMSO-d₆, 400 MHz

M3772-SB242084-01

1.03
1.00
1.02
0.95
1.00
1.05
1.03

2.08

2.07

3.12
3.03

8

6

4

2

0 PPM