

====HPLC Report====

Sample Name : M2894-Nutlin-3a-01

Data Filename : 0403-NT-6-0801.lcd

Method Filename : CZ.lcm

Batch Filename :

Vial # : 1-1

Injection Volume : 10 uL

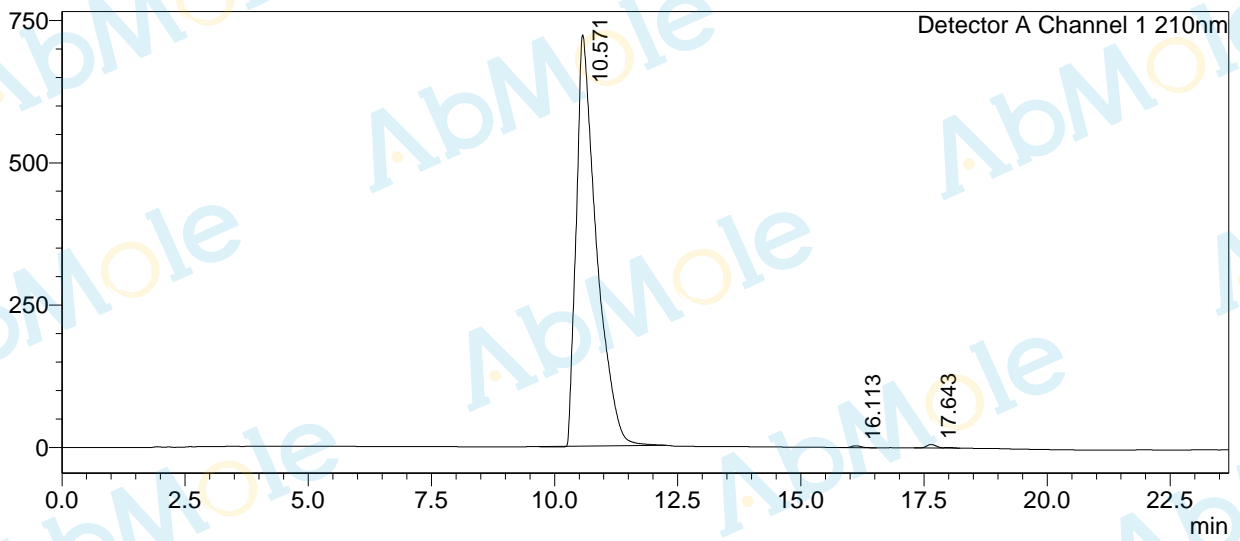
Processed by : SystemAdministrator

Sample Type : standards

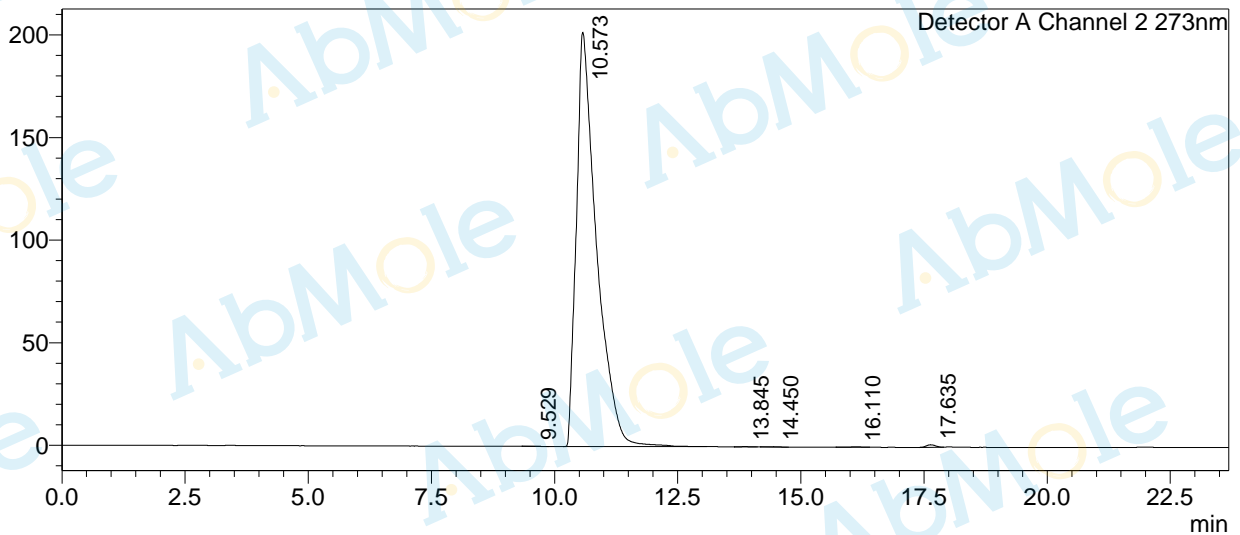
Acquired by : System Administrator

<Chromatogram>

mV



mV



<Peak Table>

Detector A Channel 1 210nm

Peak#	Ret. Time	Area	Height	Conc.	Unit	Mark	Name
1	10.571	20617628	722534	99.325		M	

Peak#	Ret. Time	Area	Height	Conc.	Unit	Mark	Name
2	16.113	42188	3297	0.203		M	
3	17.643	97970	6136	0.472		M	
Total		20757786	731966				

Detector A Channel 2 273nm

Peak#	Ret. Time	Area	Height	Conc.	Unit	Mark	Name
1	9.529	1741	101	0.030		V	
2	10.573	5763015	201939	99.584		S	
3	13.845	1266	108	0.022		M	
4	14.450	1971	178	0.034		M	
5	16.110	3584	289	0.062		M	
6	17.635	15496	1222	0.268		M	
Total		5787071	203837				