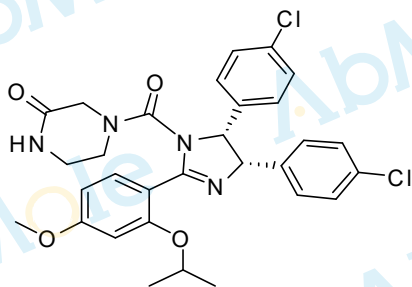


7.623 7.602 7.107 7.051 7.030 6.951 6.930 6.877 6.856 6.577 6.571 6.555 6.550 6.493 6.487 5.965 5.604 5.579 5.524 5.500 4.632 4.617 4.602 3.852 3.797 3.753 3.695 3.649 3.421 3.374 3.362 3.260 3.227 3.021 3.017 1.873 1.399 1.384 1.359 1.344 -0.000

M2894-Nutlin-3a-01
 Chemical Formula: C₃₀H₃₀Cl₂N₄O₄
 Molecular Weight: 581.49

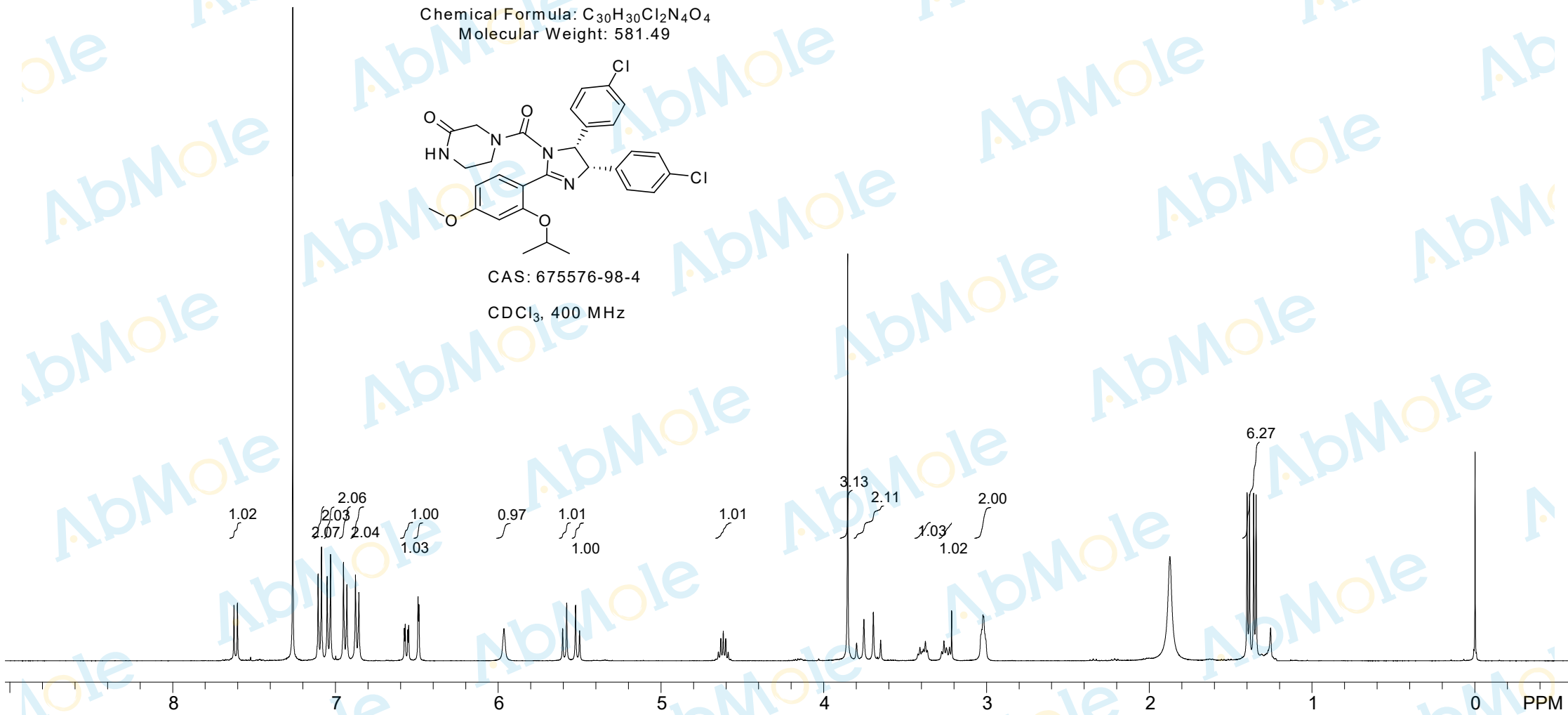


CAS: 675576-98-4
 CDCl₃, 400 MHz

1.02 2.06 2.03 2.07 2.04 1.00 1.03 0.97 1.01 1.00 1.01

3.13 2.11 1.03 1.02 2.00

6.27



8 7 6 5 4 3 2 1 0 PPM