

8.206  
8.661  
8.184  
8.060  
8.046  
8.032  
7.464

4.293  
4.272  
4.258  
4.236

3.375  
3.370  
3.349  
3.344  
3.321

3.101  
3.096  
3.057  
3.035

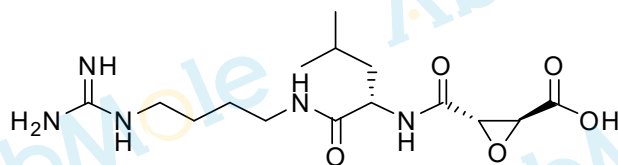
2.510  
2.506  
2.501  
2.497  
2.492

1.555  
1.535  
1.524  
1.499  
1.492  
1.479

1.468  
1.420  
0.882  
0.872  
0.866  
0.854  
0.838  
0.822  
-0.000

M2659-E-64-09

Chemical Formula: C<sub>15</sub>H<sub>27</sub>N<sub>5</sub>O<sub>5</sub>  
Molecular Weight: 357.41



CAS: 66701-25-5

DMSO-d<sub>6</sub>, 400 MHz

1.09  
0.83  
3.80

1.00  
2.06  
4.11  
1.04

4.15  
2.08  
6.20

10 8 6 4 2 0 PPM