



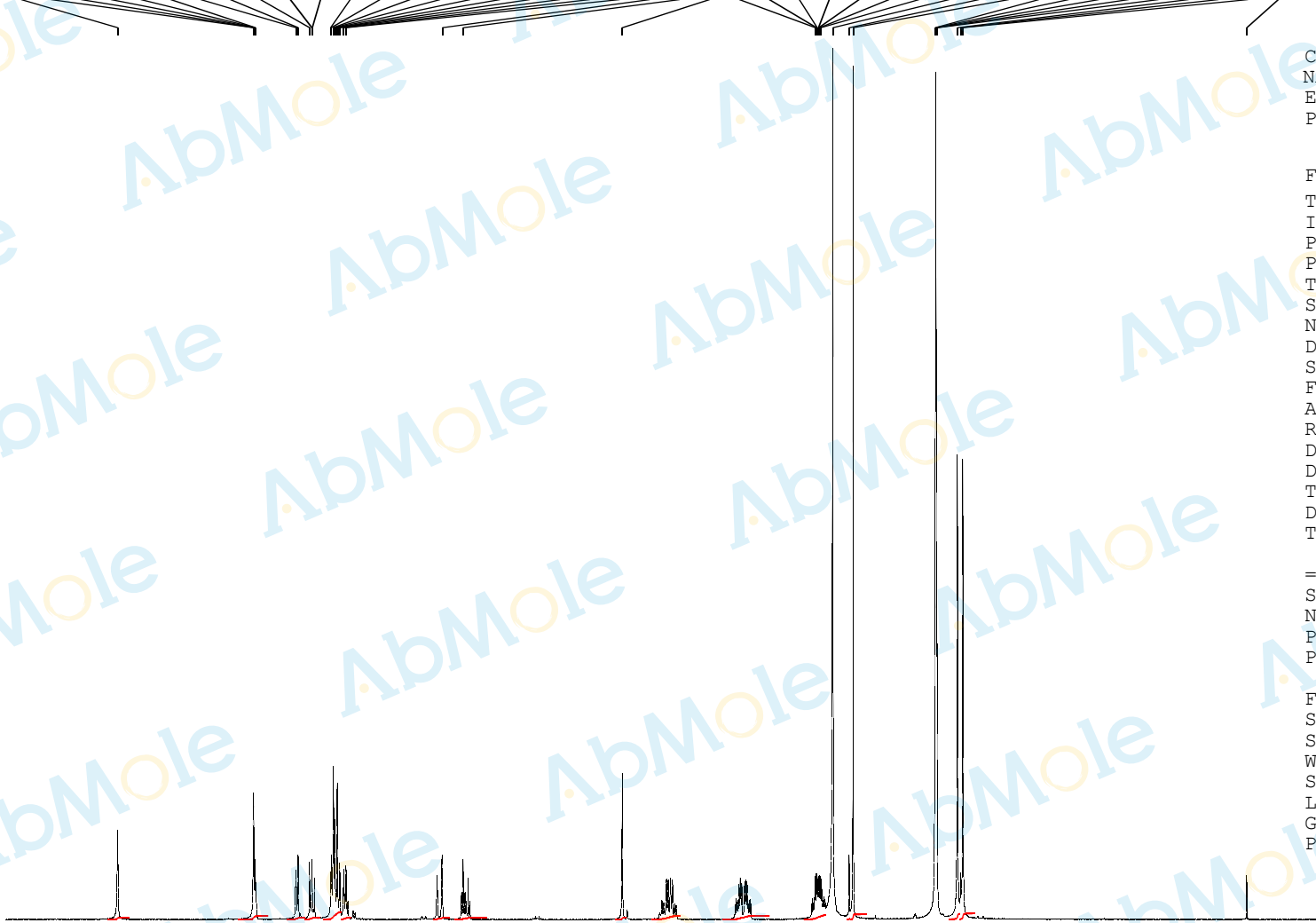
9.105
8.011
8.007
8.001
7.996
7.993
7.668
7.649
7.558
7.538
7.536
7.388
7.383
7.366
7.363
7.352
7.334
7.330
7.315
7.282
7.265
6.489
6.319
5.037
3.481
3.473
3.466
3.458
3.454
3.446
3.439
3.340
3.207
3.176
2.516
2.512
2.508
2.503
2.499
2.335
2.310
2.292
0.004

Current Data Parameters
NAME M2248-Cilnidipine-01
EXPNO 1
PROCNO 1

F2 - Acquisition Parameters
Time 10.32
INSTRUM spect
PROBHD 5 mm PADUL 13C
PULPROG zg30
TD 65536
SOLVENT DMSO
NS 8
DS 2
SWH 8012.820 Hz
FIDRES 0.122266 Hz
AQ 4.0894465 sec
RG 199.46
DW 62.400 usec
DE 6.50 usec
TE 296.4 K
D1 1.00000000 sec
TD0 1

==== CHANNEL f1 =====
SFO1 400.1324710 MHz
NUC1 1H
P1 10.00 usec
PLW1 20.00000000 W

F2 - Processing parameters
SI 65536
SF 400.1300000 MHz
WDW EM
SSB 0
LB 0.30 Hz
GB 0
PC 1.00



9 8 7 6 5 4 3 2 1 ppm

1.00
2.04
1.07
1.08
4.03
0.96
0.93
0.93
0.93
2.01
2.03
2.43
0.28
2.86
3.04
3.30