

LC-MS Report

Sample Name : M2126-Fluvastatin sodium-01
Data File : D:\DATA-LCMS-13\2022\11-19\05\3\Fluvastatin sodium-01.D
Injection Date : Tue, 5. Nov. 2022 Inj. Vol. : 5ul
Acq Operator : LCMS-13 Location : Vial 79
Acq. Method : D:\data-lcms-13\2022\11-19\05\3\N-05-60.M
Method Info. : column:C18;column size:4.6*50mm ;mobile phase:B (ACN)
A(0.02%NH4Ac); gradient(B%)!as Acq.Method above



Integration Results

Signal 1: DAD1 A, Sig=214,8 Ref=off

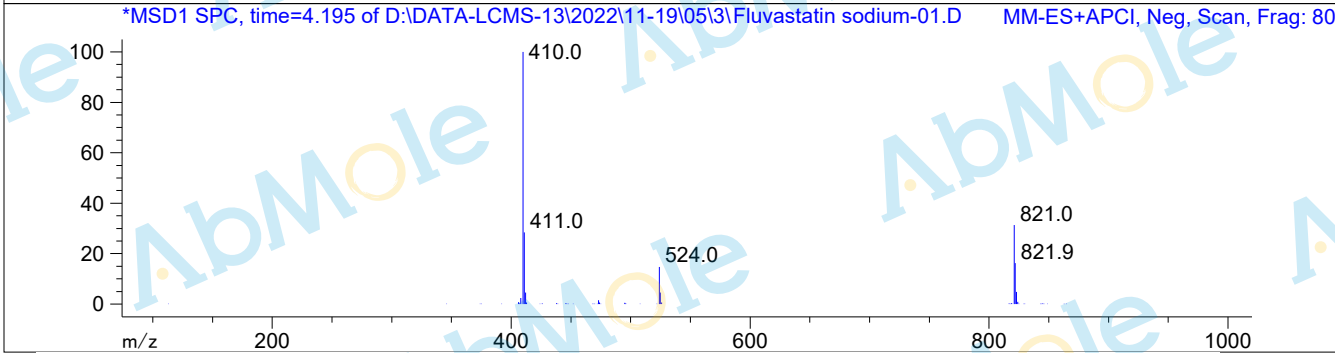
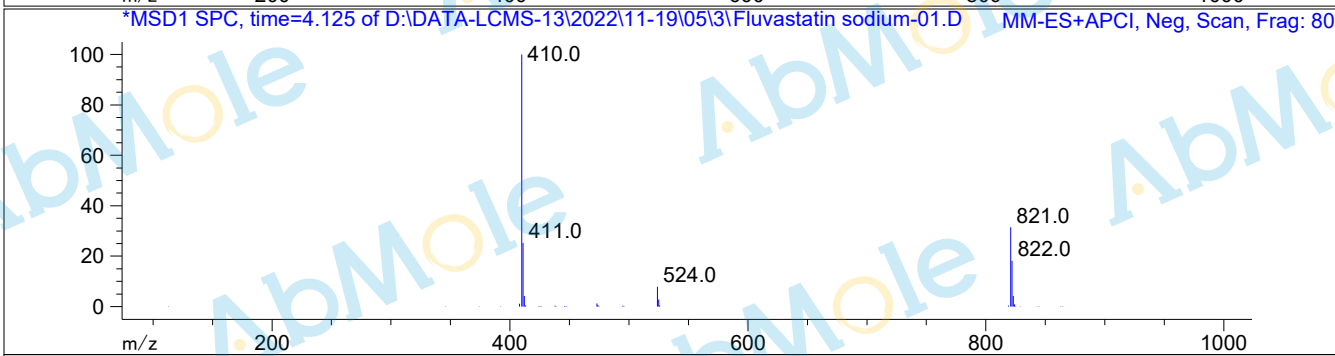
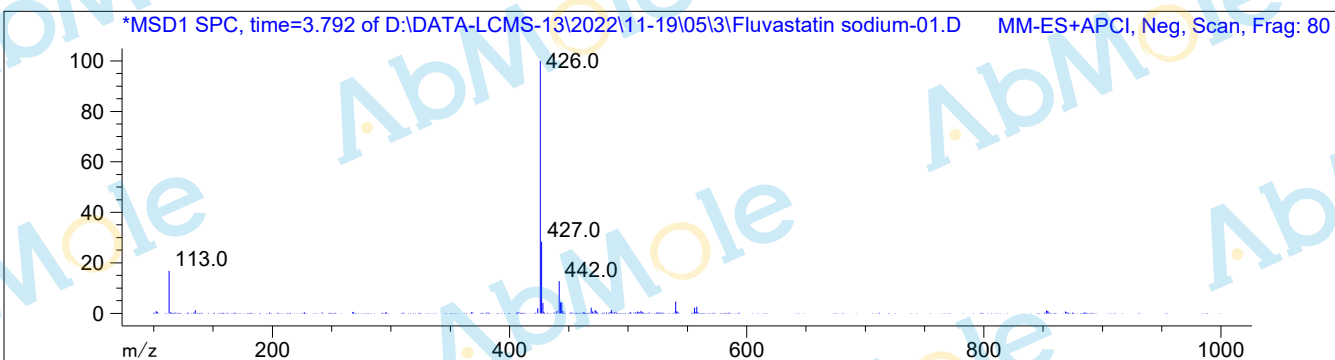
#	R.T.	Type	Height	Height%	Width	Area	Area %
1	3.791	MM	12.043	1.486	0.133	96.049	1.325
2	4.106	MM	798.398	98.514	0.149	7154.718	98.675

Signal 2: DAD1 B, Sig=254,8 Ref=off

#	R.T.	Type	Height	Height%	Width	Area	Area %
1	0.603	BV	11.792	1.342	0.070	46.613	0.596
2	4.106	VB	866.795	98.658	0.145	7769.561	99.404

Signal 3: MSD1 TIC, MS File

#	R.T.	Type	Height	Height%	Width	Area	Area %
1	3.793	MM	127993.961	1.624	0.095	725928.125	1.639
2	4.126	MF	4.789e+006	60.763	0.106	3.048e+007	68.829
3	4.195	FM	2.965e+006	37.613	0.074	1.308e+007	29.532



*** End of Report ***