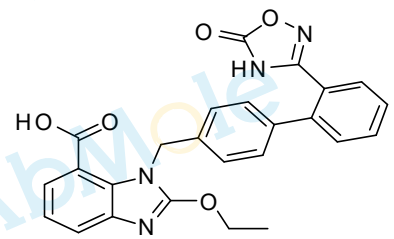


13.159

12.406

7.679
7.676
7.658
7.657
7.653
7.650
7.642
7.639
7.633
7.561
7.558
7.556
7.553
7.543
7.540
7.537
7.534
7.524
7.521
7.480
7.461
7.244
7.223
7.198
7.179
7.159
7.057
7.037
5.675
4.610
4.593
4.575
4.557
3.318
2.510
2.506
2.501
2.496
2.492
1.399
1.381
1.364
-0.000

M2106-Azilsartan-01
Chemical Formula: C₂₅H₂₀N₄O₅
Molecular Weight: 456.46



CAS: 147403-03-0

DMSO-d₆, 400 MHz

0.90

0.90

3.01

2.02

2.00

1.01

2.00

2.00

2.00

3.01

14

12

10

8

6

4

2

0

PPM