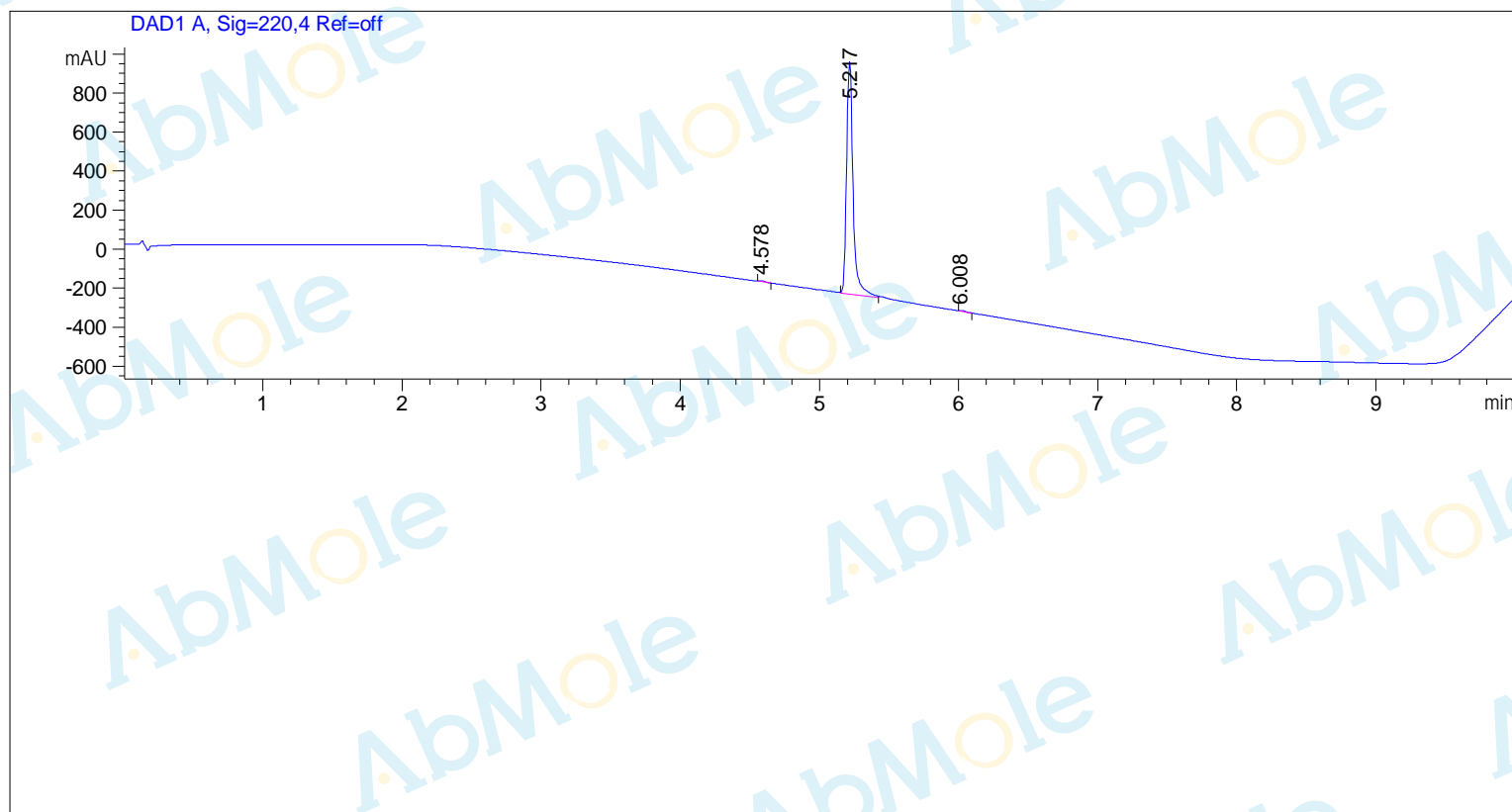


```

=====
Acq. Operator   : admin
Sample Operator : M1923-Lonidamine-01
Acq. Instrument : 3
Location       : P2-C-06
Inj            : 1
Inj Volume     : 0.100 µl
Different Inj Volume from Sample Entry! Actual Inj Volume : 2.000 µl
=====

```



```

=====
                          Area Percent Report
=====

```

```

Sorted By      : Signal
Multiplier     : 1.0000
Dilution      : 1.0000
Do not use Multiplier & Dilution Factor with ISTDs

```

```
Signal 1: DAD1 A, Sig=220,4 Ref=off
```

Peak #	RetTime [min]	Type	Width [min]	Area [mAU*s]	Height [mAU]	Area %
1	4.578	BB	0.0474	9.75037	3.21523	0.2494
2	5.217	MM	0.0544	3891.49146	1193.18677	99.5516
3	6.008	BB	0.0940	7.77755	1.37851	0.1990

Peak #	RetTime [min]	Type	Width [min]	Area [mAU*s]	Height [mAU]	Area %
Totals :				3909.01937	1197.78051	