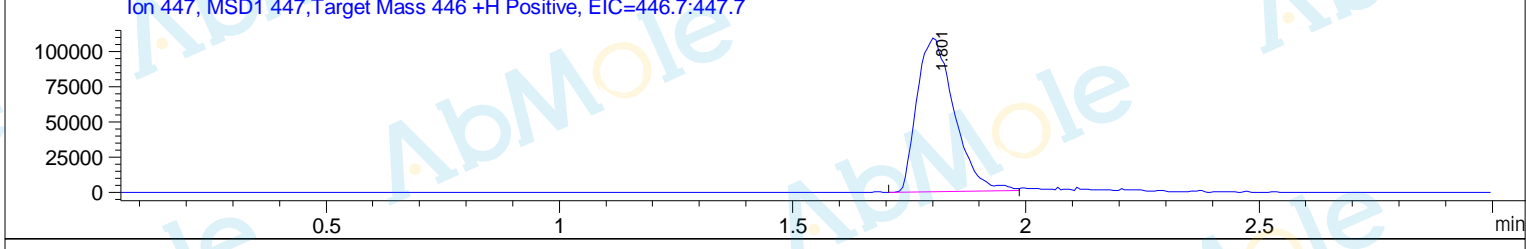
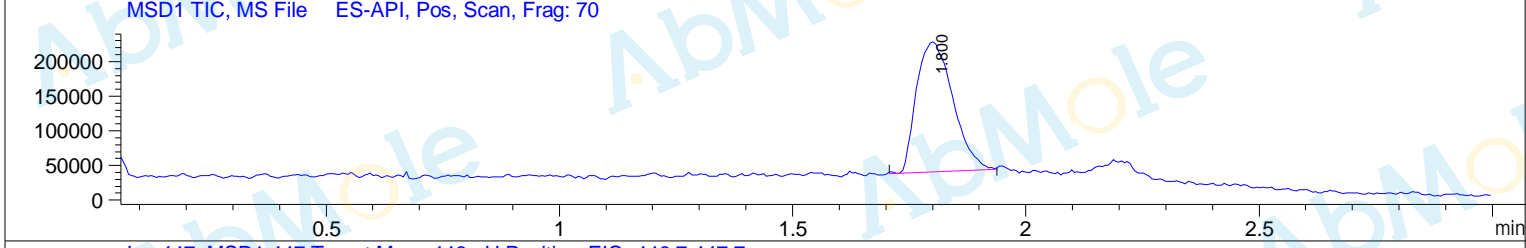
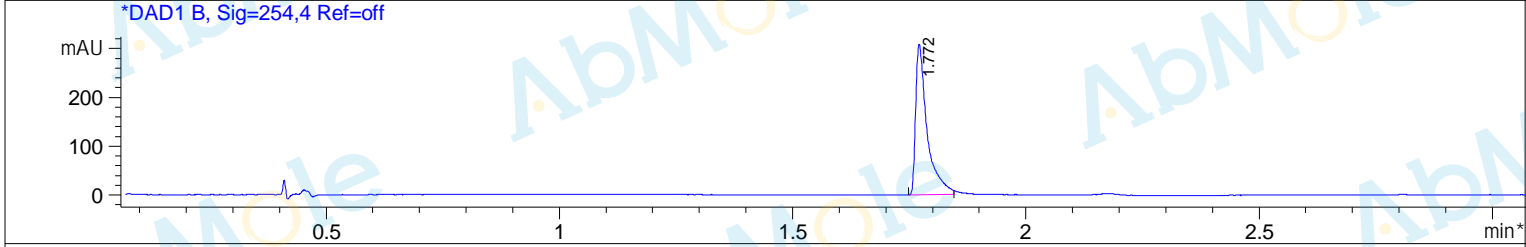
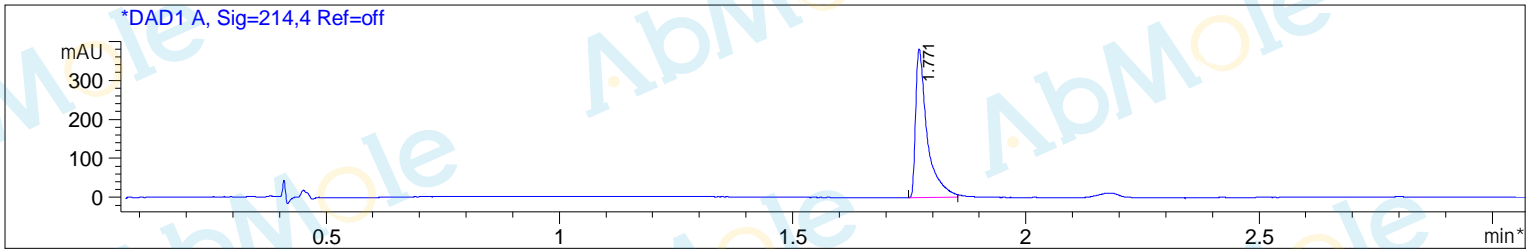


Sample Name : M10930-Dalpiciclib-01 **Tgt Mass(EZX)** : 446.00
Location : P1-A-03 **Inj** : 1
Acq. Operator : A02-Monitor **Inj Volume** : 2 ul
Spec. Reported : MS Integration
Acq. Method : D:\METHODS\2-POS-3MIN.M
Analysis Method : D:\METHODS\2-POS-3MIN.M
Sample Info : Easy-Access Method: '2-POS-3MIN' 446.00
Method Info : Column XBRIGE C18 (4.6x 50 mm, 3.5um)
 Mobile phase: H2O(10 mmol NH4HCO3) (A) / ACN(B)
 Elution program: Gradient from 10 to 95% of B in1.5min at 1.8ml/min
 Temperature: 50 °C
 Detection: UV (214 , 4 nm) and MS (ESI, POSmode ,103 to 1000 amu)



Integration Results for DAD1 A, Sig=214,4 Ref=off

RetTim	Width	Area	Height	Area%
1.77	0.03	655.37	379.72	100.00

Integration Results for DAD1 B, Sig=254,4 Ref=off

RetTim	Width	Area	Height	Area%
1.77	0.02	526.86	307.48	100.00

Ret. Time: 1.80

<<<< POSITIVE SPECTRA >>>>

*ES-API Positive

