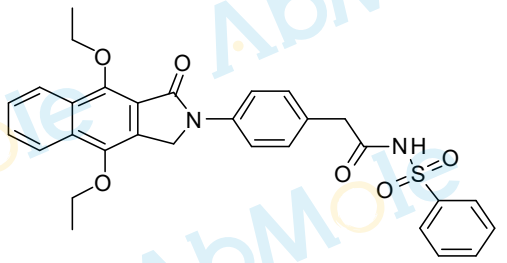


12.370

8.324
8.304
8.188
8.168
7.929
7.911
7.905
7.883
7.733
7.730
7.725
7.722
7.714
7.709
7.705
7.699
7.696
7.688
7.685
7.656
7.653
7.644
7.640
7.635
7.631
7.624
7.606
7.249
7.228
5.154
4.413
4.396
4.378
4.361
4.326
4.307
4.291
4.273
3.581
3.319
2.506
2.501
2.497
1.484
1.466
1.446
1.429
-0.001

M10180-GW627368X-01
Chemical Formula: C₃₀H₂₈N₂O₆S
Molecular Weight: 544.62



CAS: 439288-66-1
DMSO-d₆, 400 MHz

0.96

1.03
1.01

4.07

3.04

2.05

2.02

2.00

2.03

2.05

2.01

6.18

12

10

8

6

4

2

0

PPM