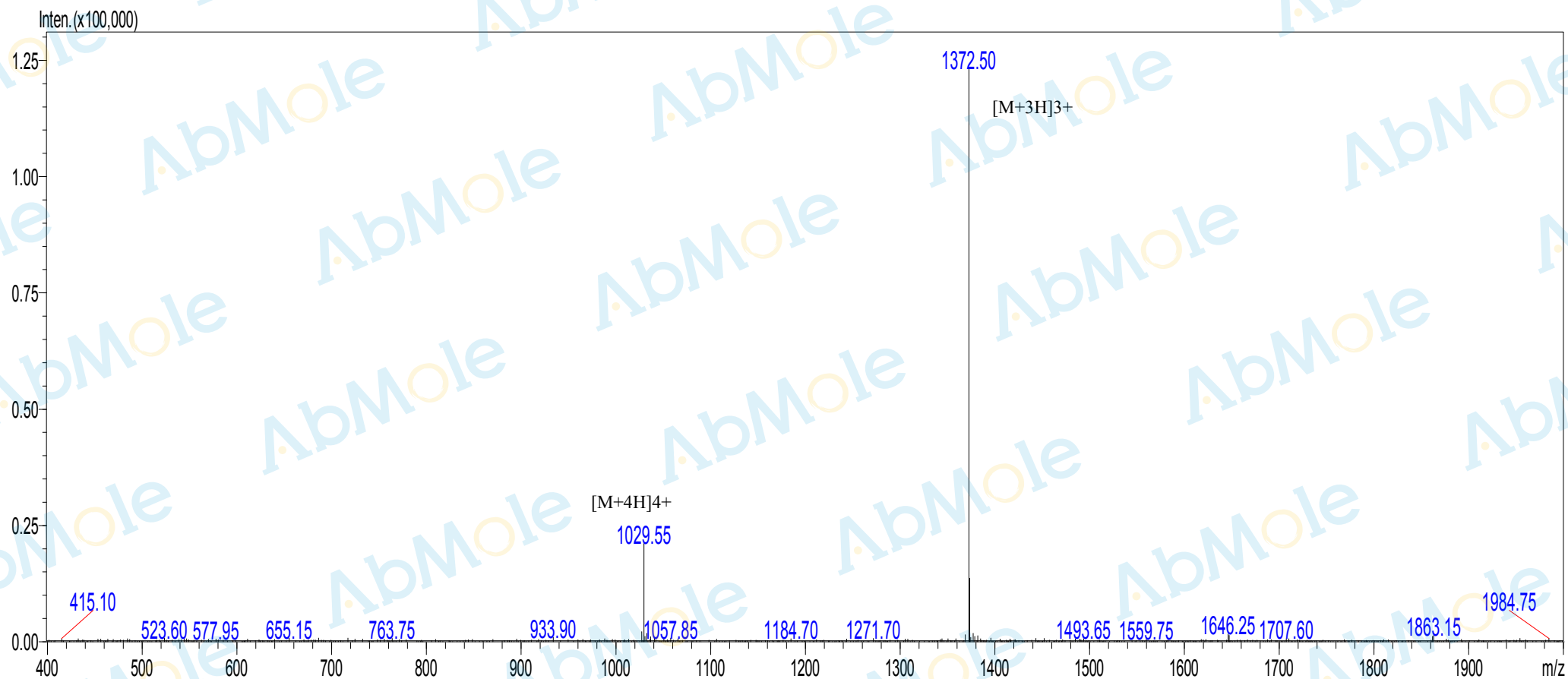


# MASS SPECTROMETRY REPORT



## Sample Description

Analyst: SHAO  
Sample: M10035-Semaglutide-01  
M.W.: 4113.6  
Lot. No.:

## Instrument

Probe: ESI  
Nebulizer Gas Flow: 1.5L/min  
CDL: -20.0v  
CDL Temp.: 250°C  
Block Temp.: 200°C

## SHIMADZU LCMS-2020

Probe Bias: +4.5kv  
Detector: 1.5kv  
T. Flow: 0.2ml/min  
B. Conc.: 50%H2O/50%ACN