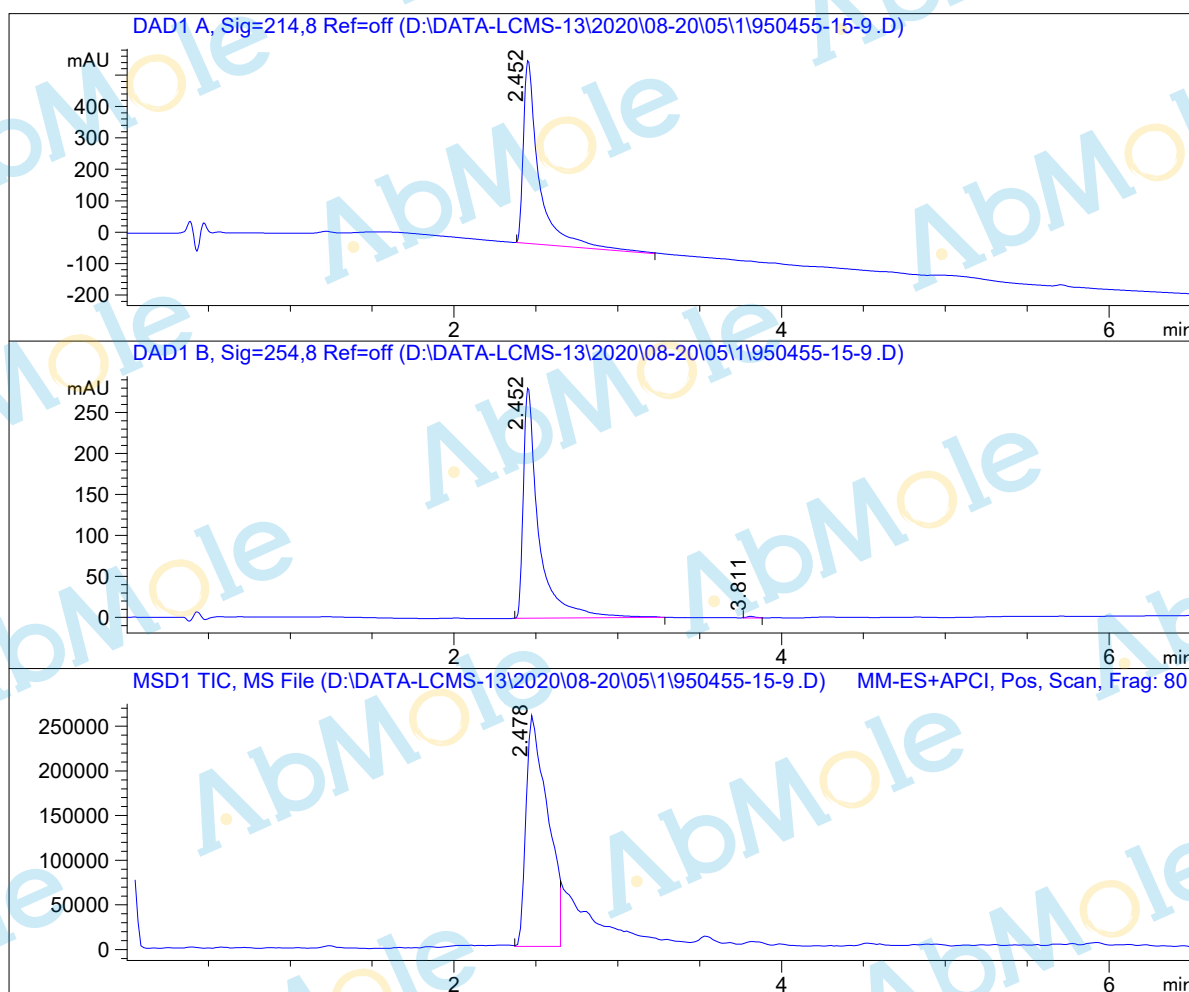


LCMS Report

Sample Name : Liproxstatin-1
Data File : D:\DATA-LCMS-13\2020\08-20\05\1\950455-15-9.D
Injection Date : Wed, 5. Aug. 2020 Inj. Vol. : 2ul
Acq Operator : LCMS-13 Location : Vial 45
Acq. Method : D:\data-lcms-13\2020\08-20\05\1\P-10-80-TFA.M
Method Info. : column:Xbridge C18 5um 4.6*50mm ;mobile phase:B (ACN)
A(0.05%TFA) ; gradient (B%)!as Acq.Method above



Integration Results

Signal 1: DAD1 A, Sig=214,8 Ref=off

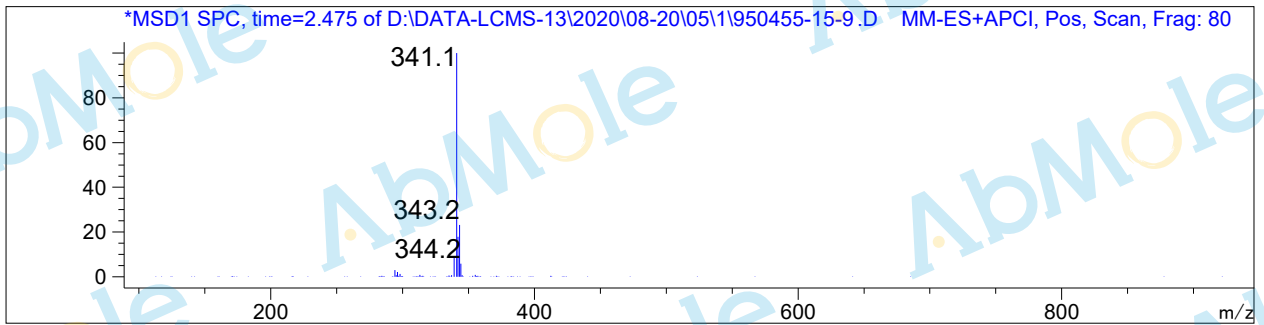
#	R.T.	Type	Height	Height%	Width	Area	Area %
1	2.452	MF	585.040	100.000	0.110	3876.887	100.000

Signal 2: DAD1 B, Sig=254,8 Ref=off

#	R.T.	Type	Height	Height%	Width	Area	Area %
1	2.452	MM	282.342	99.394	0.109	1843.654	99.661
2	3.811	MF	1.722	0.606	0.061	6.268	0.339

Signal 3: MSD1 TIC, MS File

#	R.T.	Type	Height	Height%	Width	Area	Area %
1	2.478	MF	260625.859	100.000	0.154	2.412e+006	100.000



*** End of Report ***