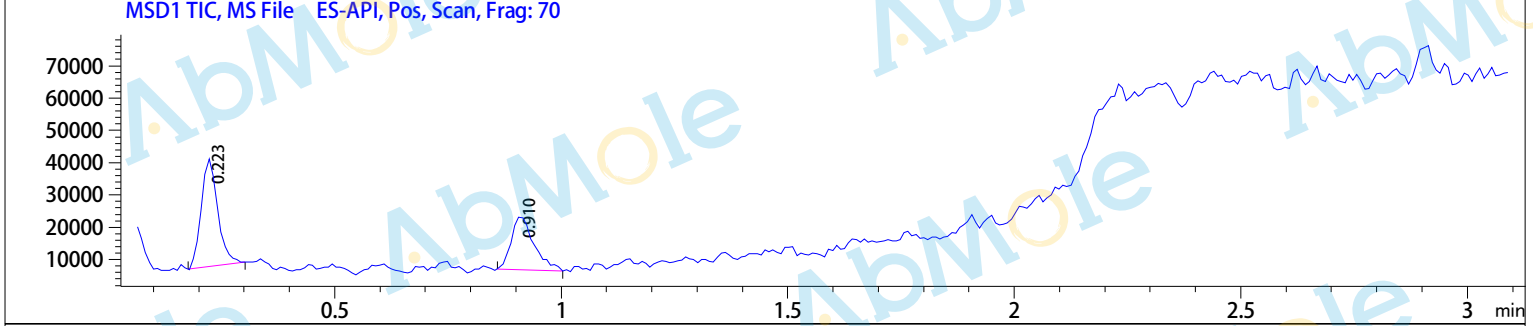
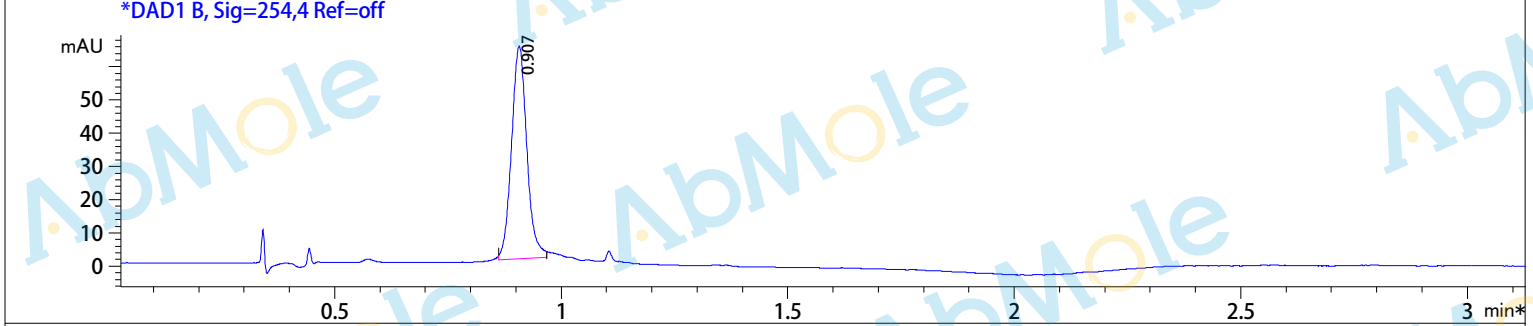
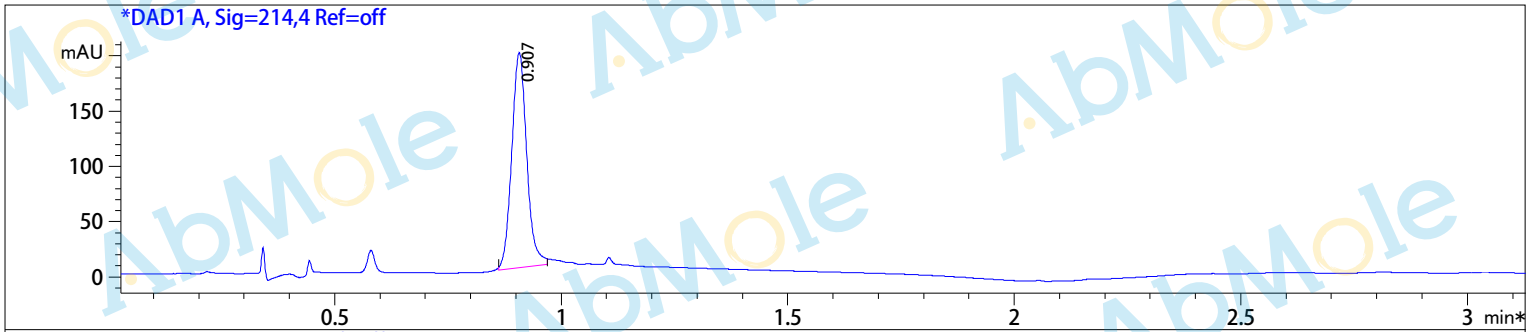


Injection Date : 31 Jul 20
 Sample Name : Levomefolic acid-01
 Method Info : Column:SunFire C18 (4.6x 50 mm,3.5 um)
 Mobile phase: H2O(0.01%TFA) (A) / ACN(0.01%TFA) (B)
 Elution program: Gradient from 10 to 95% of B in 1.4 min at 2ml/min
 Temperature: 50 °C
 Detection: UV (214 , 4 nm) and MS (ESI, Pos mode ,110 to 1000 amu)



Integration Result for DAD1 A, Sig=214, Ref=off

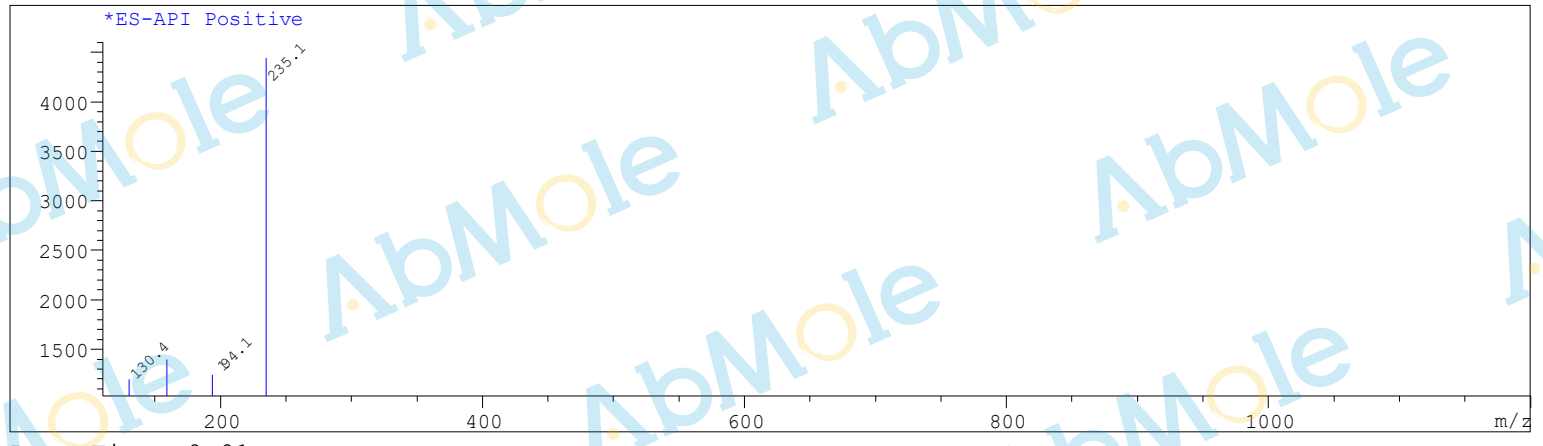
RetTim	Width	Area	%	Height	Area
0.91	0.04	447.90		194.32	100.00

Integration Result for DAD1 B, Sig=254, Ref=off

RetTim	Width	Area	%	Height	Area
0.91	0.04	150.39		63.94	100.00

Ret. Time: 0.22

<<<< POSITIVE SPECTRA >>>>



Ret. Time: 0.91

