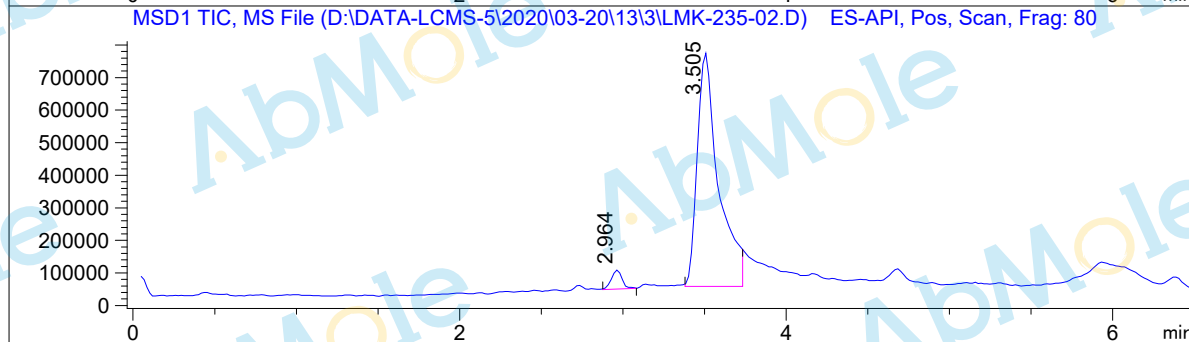
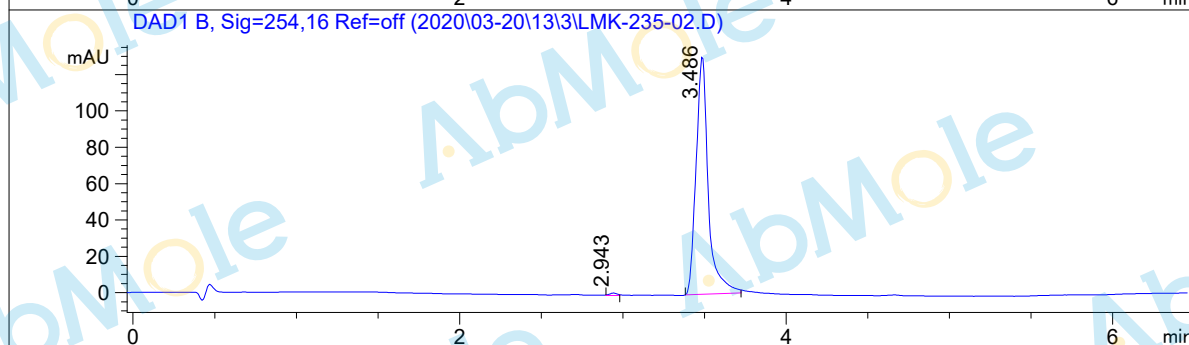
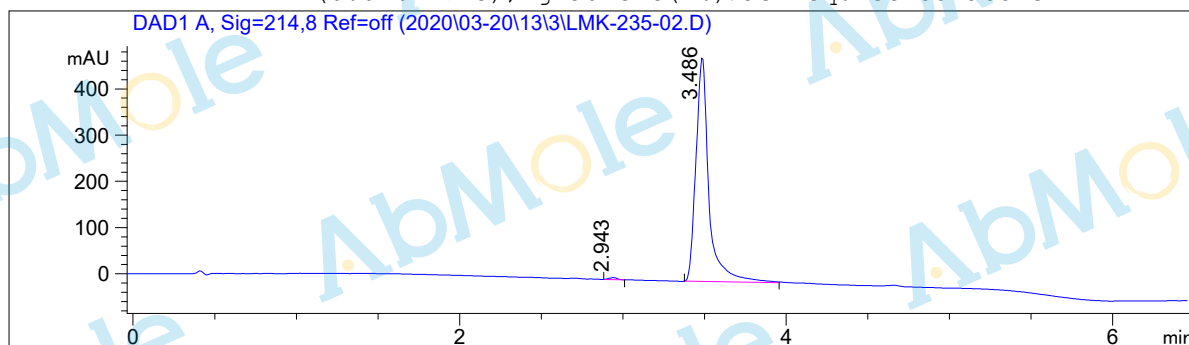


L C M S Report

Sample Name : LMK-235-02
Data File : D:\DATA-LCMS-5\2020\03-20\13\3\LMK-235-02.D
Injection Date : Fri, 13. Mar. 2020 Inj. Vol. : 3ul
Acq Operator : lcms-5 Location : Vial 32
Acq. Method : D:\data-lcms-5\2020\03-20\13\3\P-05-60.M
Method Info. : column:ZORBAX C18 5um 4.6*50mm ;mobile phase:B (ACN)
A(0.02%NH4Ac) ; gradient (B%)!as Acq.Method above



Integration Results

Signal 1: DAD1 A, Sig=214,8 Ref=off

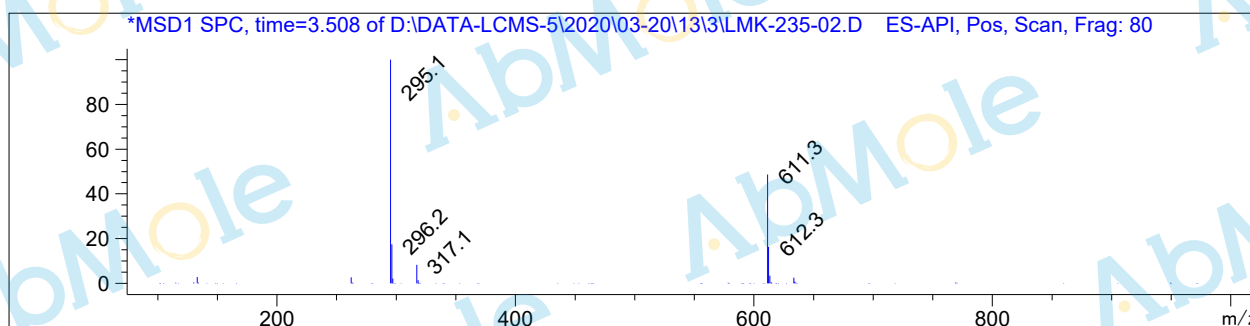
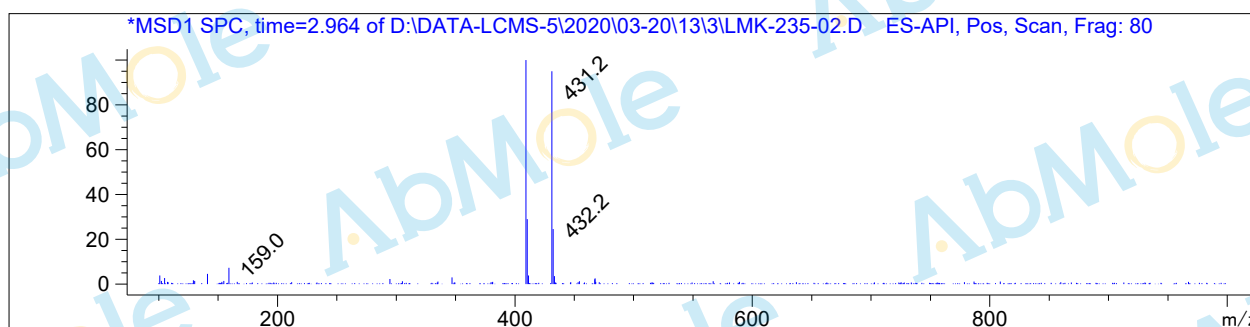
#	R.T.	Type	Height	Height%	Width	Area	Area %
1	2.943	FM	4.389	0.898	0.060	15.843	0.589
2	3.486	BB	484.164	99.102	0.080	2673.565	99.411

Signal 2: DAD1 B, Sig=254,16 Ref=off

#	R.T.	Type	Height	Height%	Width	Area	Area %
1	2.943	MM	1.342	1.015	0.056	4.510	0.658
2	3.486	BB	130.862	98.985	0.077	680.638	99.342

Signal 3: MSD1 TIC, MS File

#	R.T.	Type	Height	Height%	Width	Area	Area %
1	2.964	BV	58380.988	7.491	0.068	260309.641	3.848
2	3.505	MM	720993.500	92.509	0.150	6.505e+006	96.152



*** End of Report ***