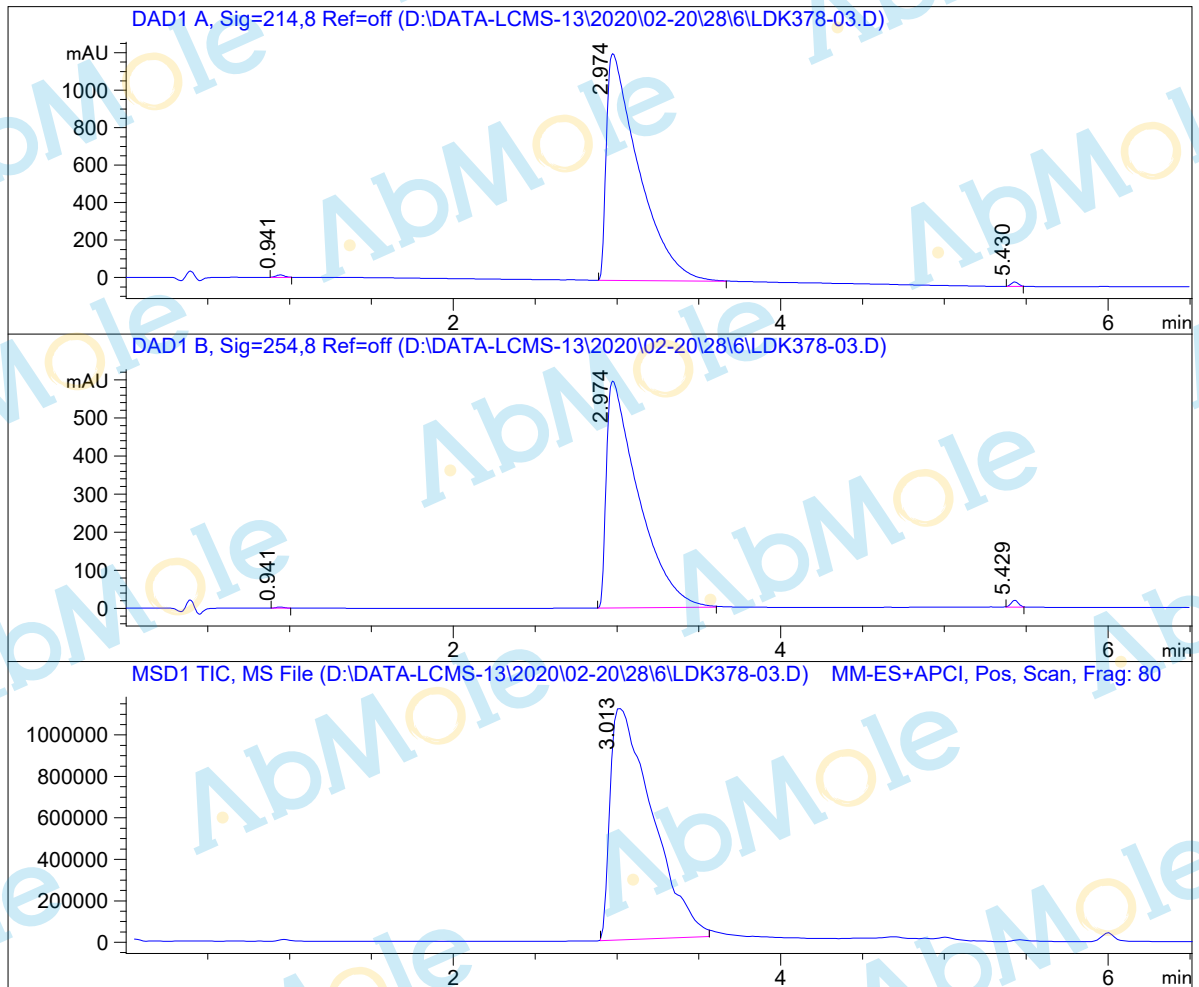


LCMS Report

Sample Name : LDK378-03
Data File : D:\DATA-LCMS-13\2020\02-20\28\6\LDK378-03.D
Injection Date : Fri, 28. Feb. 2020 Inj. Vol. : 5ul
Acq Operator : LCMS-13 Location : Vial 41
Acq. Method : D:\data-lcms-13\2020\02-20\28\6\P-30-95.M
Method Info. : column:Xbridge C18 5um 4.6*30mm ;mobile phase:B (ACN)
A(0.02%NH4Ac); gradient(B%)!as Acq.Method above



Integration Results

Signal 1: DAD1 A, Sig=214,8 Ref=off

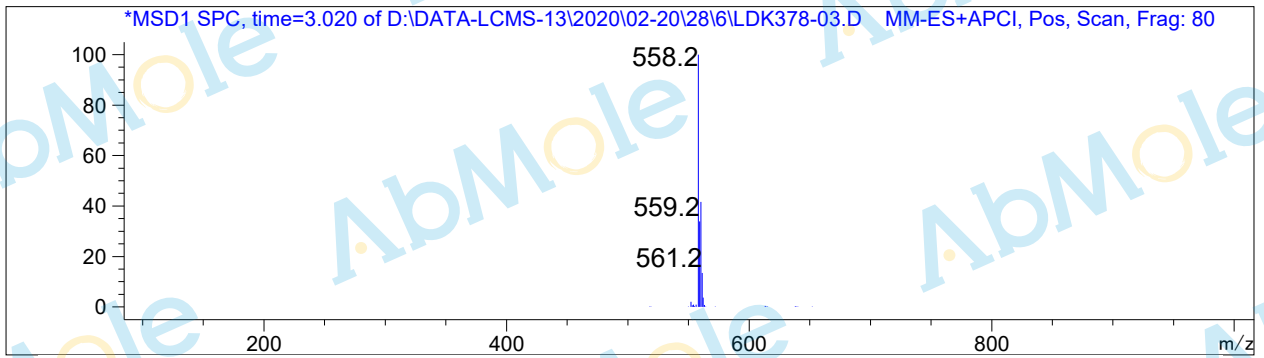
#	R.T.	Type	Height	Height%	Width	Area	Area %
1	0.941	MF	13.205	1.060	0.062	49.035	0.295
2	2.974	BB	1209.508	97.051	0.189	16489.008	99.273
3	5.430	MM	23.552	1.890	0.051	71.795	0.432

Signal 2: DAD1 B, Sig=254,8 Ref=off

#	R.T.	Type	Height	Height%	Width	Area	Area %
1	0.941	FM	2.865	0.465	0.060	10.360	0.127
2	2.974	BB	595.635	96.566	0.188	8085.296	99.147
3	5.429	MM	18.318	2.970	0.054	59.235	0.726

Signal 3: MSD1 TIC, MS File

#	R.T.	Type	Height	Height%	Width	Area	Area %
1	3.013	FM	1.118e+006	100.000	0.298	2.001e+007	100.000



*** End of Report ***