

8.465
8.444
8.228
8.049
7.839
7.836
7.819
7.816
7.622
7.602
7.584
7.507
7.354
7.334
7.315
6.818

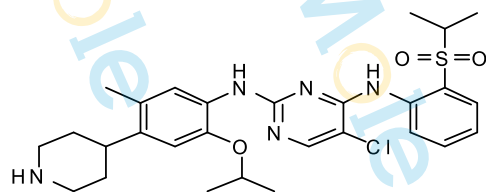
4.554
4.539
4.524

3.500
3.484
3.467
3.334
3.051
3.021
2.711
2.636
2.610
2.605
2.582
2.506
2.502
2.499
2.120
2.086
1.615
1.587
1.563
1.555
1.534
1.525
1.503
1.495
1.228
1.213
1.165
1.148
-0.001

Sample Name: LDK378-03

Chemical Formula: C₂₈H₃₆ClN₅O₃S

Molecular Weight: 558.14



CAS: 1032900-25-6

DM SO -d6, 400 MHz

0.95
1.00
1.03
1.01
1.02
1.04

1.02

1.02

1.09

2.11

2.03
1.05

3.11

4.18

6
12
6
14

8

6

4

2

0

PPM