

# LCMS Report

Sample Name : LDC000067-01  
 Data File : D:\DATA-LCMS-13\2020\03-20\24\5\1073485-20-7.D  
 Injection Date : Tue, 24. Mar. 2020 Inj. Vol. : 2ul  
 Acq Operator : LCMS-13 Location : Vial 33  
 Acq. Method : D:\data-lcms-13\2020\03-20\24\5\P-05-95-TFA.M  
 Method Info. : column:Eclipse XDB-C18 5um 4.6\*150mm ;mobile phase:B(ACN) A(0.02%NH4AC); gradient(B%)!as Acq.Method above



## Integration Results

Signal 1: DAD1 A, Sig=214,8 Ref=off

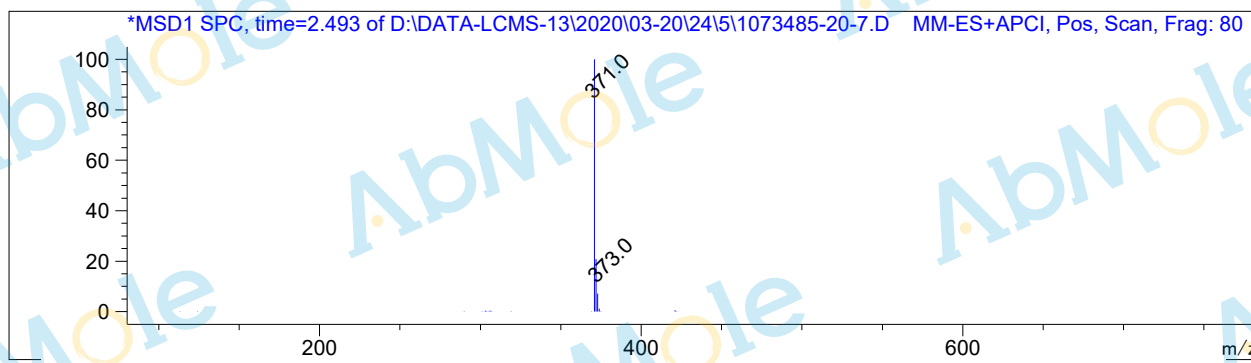
#	R.T.	Type	Height	Height%	Width	Area	Area %
1	2.458	BB	1374.418	99.475	0.046	3986.659	99.512
2	2.649	MF	7.252	0.525	0.045	19.563	0.488

Signal 2: DAD1 B, Sig=254,8 Ref=off

#	R.T.	Type	Height	Height%	Width	Area	Area %
1	2.236	MF	1.648	0.244	0.048	4.702	0.241
2	2.374	MF	1.463	0.217	0.039	3.417	0.175
3	2.458	FM	665.838	98.765	0.048	1923.280	98.684
4	2.649	MF	3.545	0.526	0.050	10.637	0.546
5	3.508	FM	1.672	0.248	0.069	6.891	0.354

Signal 3: MSD1 TIC, MS File

#	R.T.	Type	Height	Height%	Width	Area	Area %
1	2.486	FM	280867.719	100.000	0.074	1.247e+006	100.000



\*\*\* End of Report \*\*\*