

LCMS Report

Sample Name : KX2-391-01
 Data File : D:\DATA-LCMS-13\2020\02-20\27\2\KX2-391-01.D
 Injection Date : Thu, 27. Feb. 2020 Inj. Vol. : 3ul
 Acq Operator : LCMS-13 Location : Vial 27
 Acq. Method : D:\data-lcms-13\2020\02-20\27\2\P-05-95.M
 Method Info. : column:Eclipse XDB-C18 5um 4.6*150mm ;mobile phase:B(ACN) A(0.02%NH4AC); gradient(B%)!as Acq.Method above



Integration Results

Signal 1: DAD1 A, Sig=214,8 Ref=off

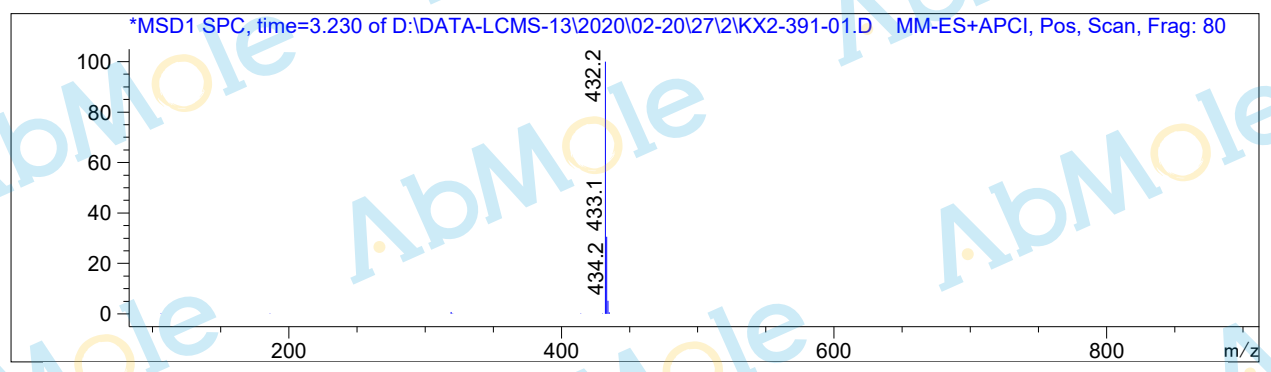
#	R.T.	Type	Height	Height%	Width	Area	Area %
1	2.590	FM	20.207	0.762	0.053	63.664	0.752
2	2.685	MF	9.839	0.371	0.060	35.312	0.417
3	3.010	MF	12.377	0.467	0.051	37.669	0.445
4	3.213	MM	2608.347	98.400	0.053	8332.099	98.386

Signal 2: DAD1 B, Sig=254,8 Ref=off

#	R.T.	Type	Height	Height%	Width	Area	Area %
1	2.591	BV	6.680	0.287	0.048	20.651	0.293
2	2.686	VB	7.011	0.301	0.055	24.609	0.350
3	3.013	BB	8.074	0.347	0.064	36.041	0.512
4	3.213	BB	2305.238	99.065	0.049	6955.640	98.845

Signal 3: MSD1 TIC, MS File

#	R.T.	Type	Height	Height%	Width	Area	Area %
1	3.237	MM	1.628e+006	100.000	0.084	8.166e+006	100.000



*** End of Report ***