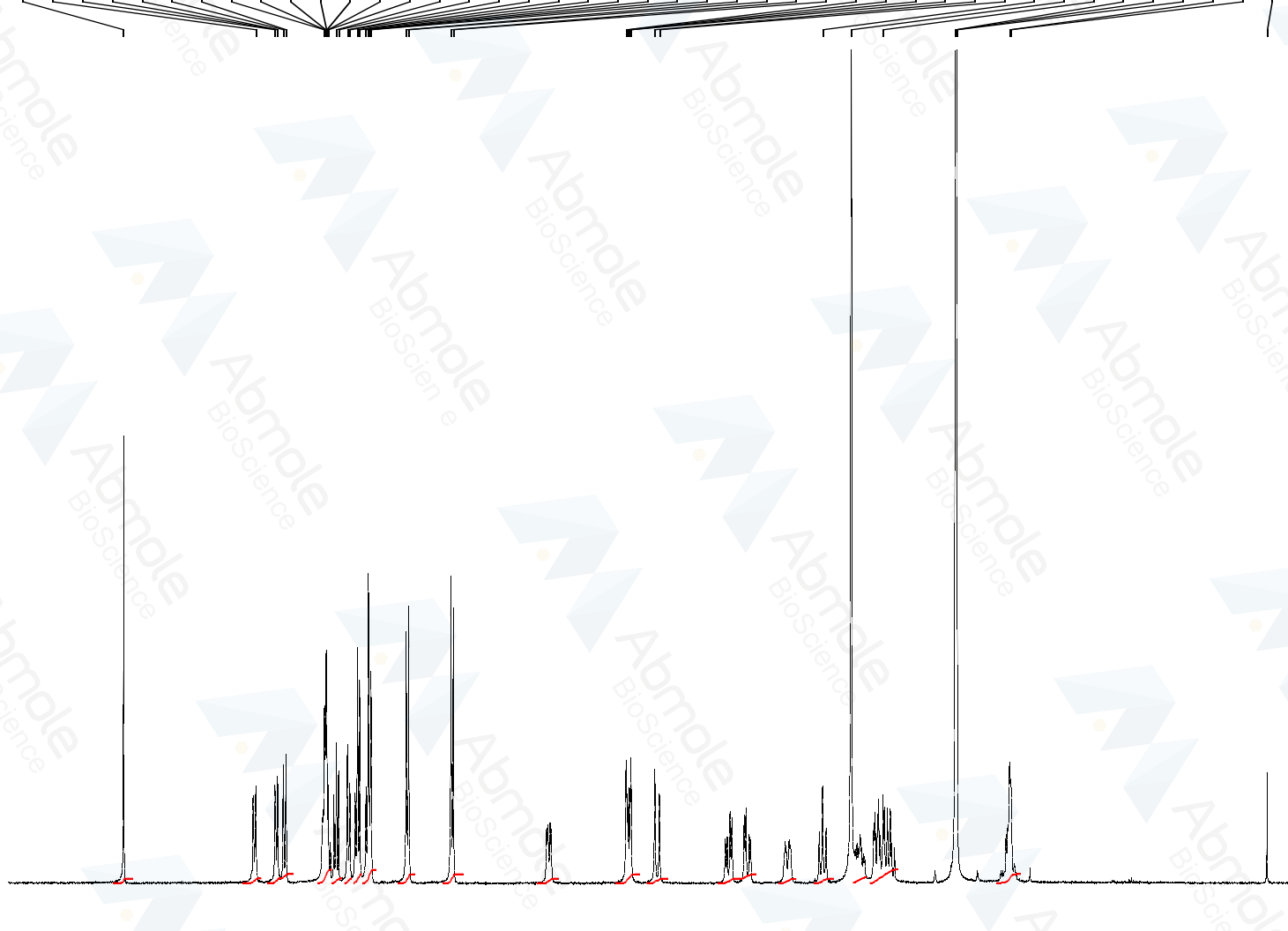




9.207
8.142
7.988
7.970
7.965
7.921
7.900
7.594
7.589
7.581
7.576
7.570
7.562
7.558
7.496
7.476
7.404
7.387
7.325
7.307
7.257
7.237
7.233
7.216
6.932
6.911
6.573
6.552
5.161
5.142
5.130
5.123
4.932
4.894
3.580
3.350
3.094
2.511
2.507
2.503
2.076
2.068
0.004



10 9 8 7 6 5 4 3 2 1 ppm

1.04
1.08 2.13 3.17 1.08 1.07 2.07 3.09 2.05 2.05
1.00
2.07 1.01
2.06 0.98 1.01 1.38 3.20
2.16

Current Data Parameters
NAME ICG-001-04
EXPNO 1
PROCNO 1

F2 - Acquisition Parameters
Date_ 20170117
Time 10.32
INSTRUM spect
PROBHD 5 mm PADUL 13C
PULPROG zg30
TD 65536
SOLVENT DMSO
NS 16
DS 2
SWH 8012.820 Hz
FIDRES 0.122266 Hz
AQ 4.0894465 sec
RG 199.46
DW 62.400 usec
DE 6.50 usec
TE 293.1 K
D1 1.00000000 sec
TD0 1

===== CHANNEL f1 =====
SFO1 400.1324710 MHz
NUC1 1H
P1 10.00 usec
PLW1 20.00000000 W

F2 - Processing parameters
SI 65536
SF 400.1300000 MHz
WDW EM
SSB 0
LB 0.30 Hz
GB 0
PC 1.00