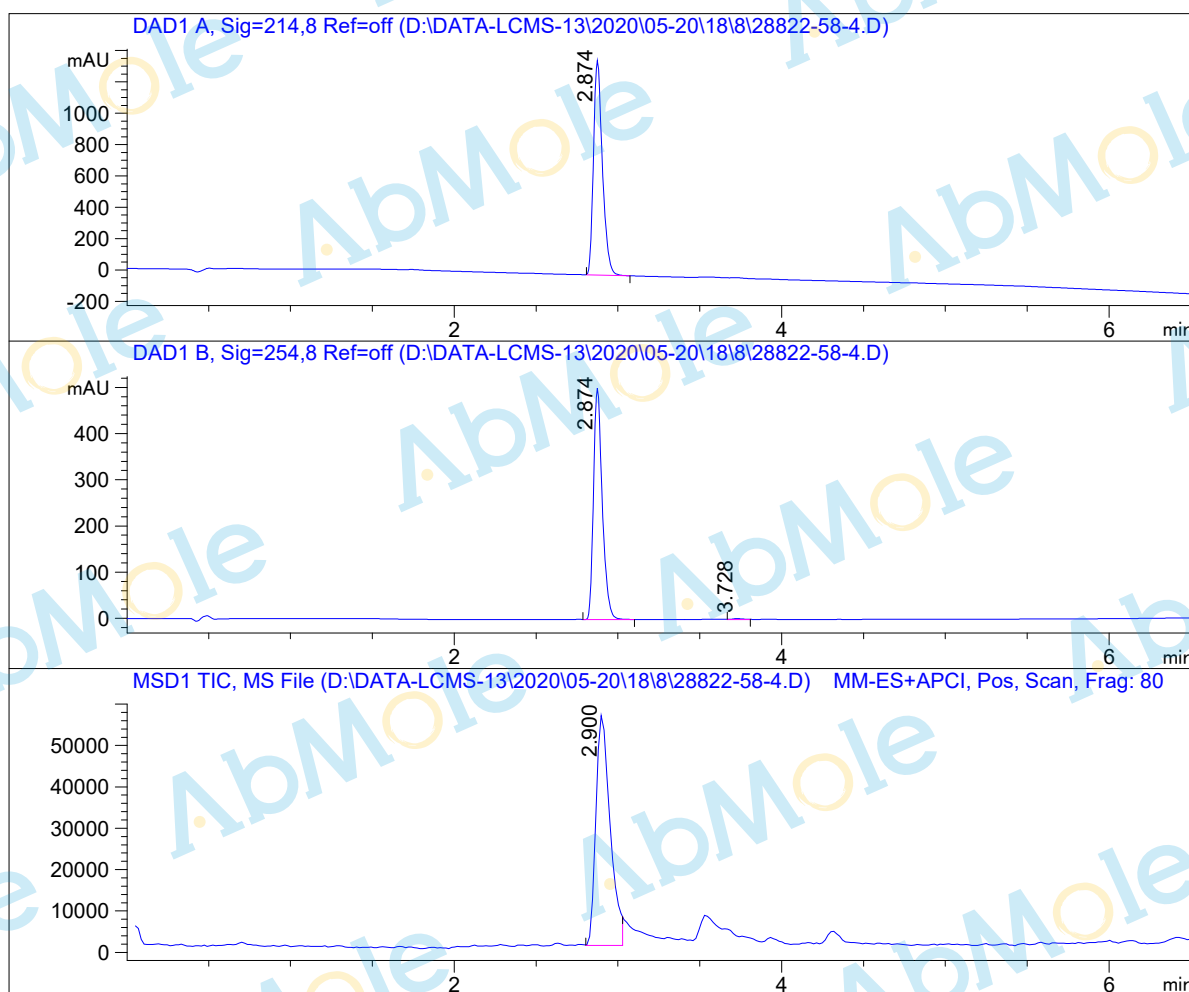


# LCMS Report

Sample Name : IBMX-02  
Data File : D:\DATA-LCMS-13\2020\05-20\18\8\28822-58-4.D  
Injection Date : Mon, 18. May. 2020 Inj. Vol. : 2ul  
Acq Operator : LCMS-13 Location : Vial 81  
Acq. Method : D:\data-lcms-13\2020\05-20\18\8\P-05-60.M  
Method Info. : column:Eclipse XDB-C18 5um 4.6\*150mm ;mobile phase:B (ACN) A(0.02%NH4AC); gradient(B%)!as Acq.Method above



## Integration Results

Signal 1: DAD1 A, Sig=214,8 Ref=off

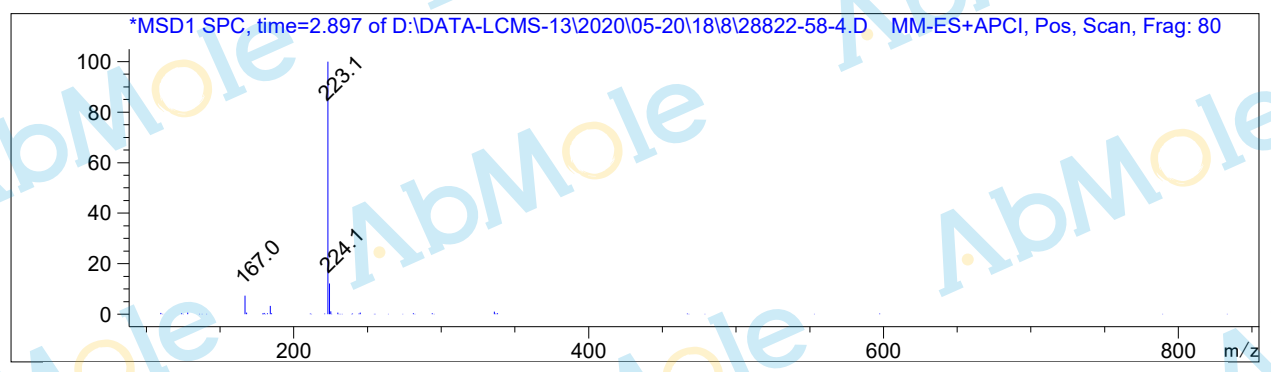
#	R.T.	Type	Height	Height%	Width	Area	Area %
1	2.874	MF	1372.326	100.000	0.063	5197.019	100.000

Signal 2: DAD1 B, Sig=254,8 Ref=off

#	R.T.	Type	Height	Height%	Width	Area	Area %
1	2.874	FM	502.928	99.589	0.062	1870.699	99.499
2	3.728	MM	2.074	0.411	0.076	9.414	0.501

Signal 3: MSD1 TIC, MS File

#	R.T.	Type	Height	Height%	Width	Area	Area %
1	2.900	MF	56263.699	100.000	0.101	339671.156	100.000



\*\*\* End of Report \*\*\*