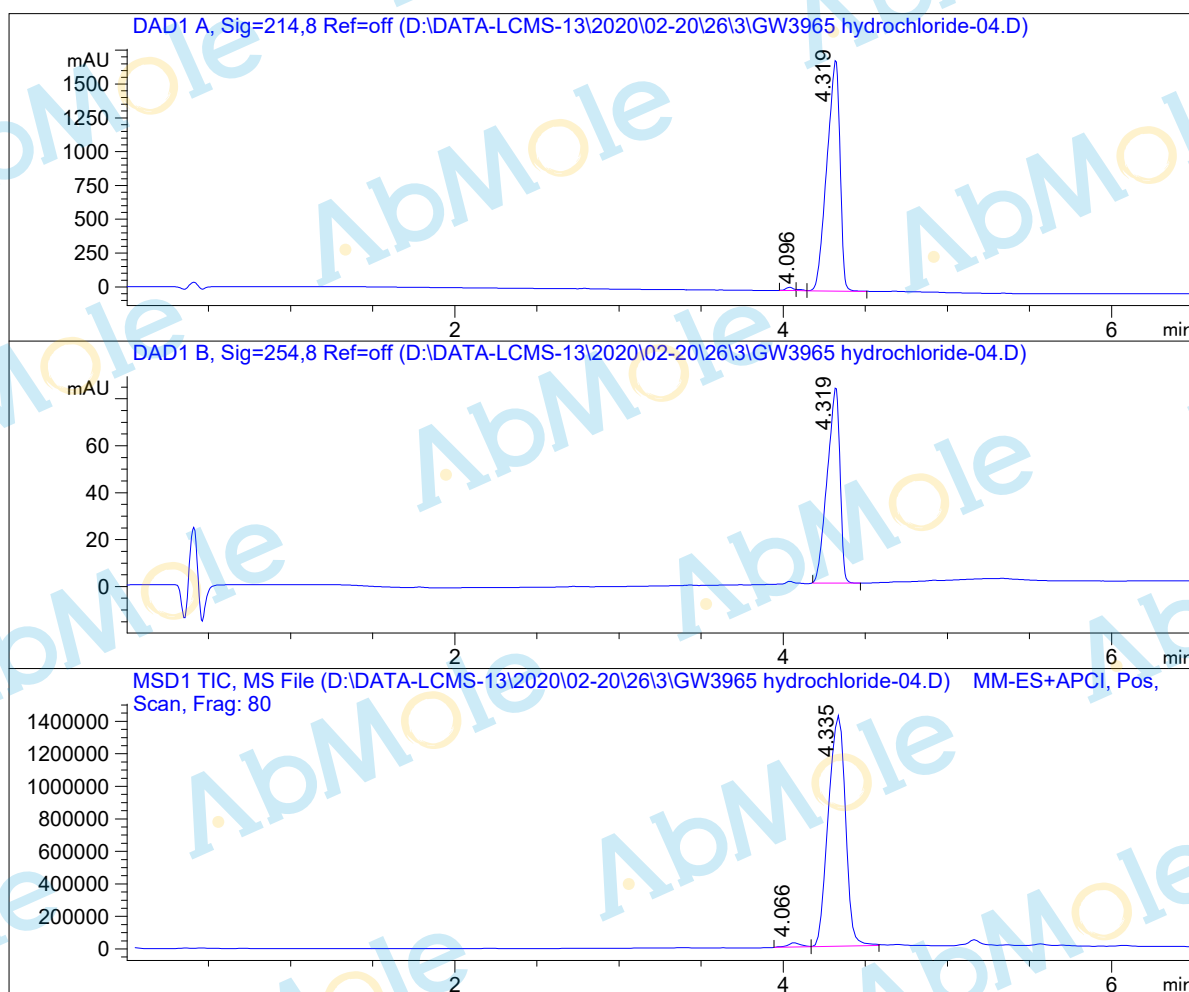


LCMS Report

Sample Name : GW3965 hydrochloride-04
 Data File : D:\DATA-LCMS-13\2020\02-20\26\3\GW3965 hydrochloride-04.D
 Injection Date : Wed, 26. Feb. 2020 Inj. Vol. : 5ul
 Acq Operator : LCMS-13 Location : Vial 1
 Acq. Method : D:\data-lcms-13\2020\02-20\26\3\P-20-95.M
 Method Info. : column:Eclipse XDB-C18 5um 4.6*150mm ;mobile phase:B(ACN) A(0.02%NH4AC); gradient(B%)!as Acq.Method above



Integration Results

Signal 1: DAD1 A, Sig=214,8 Ref=off

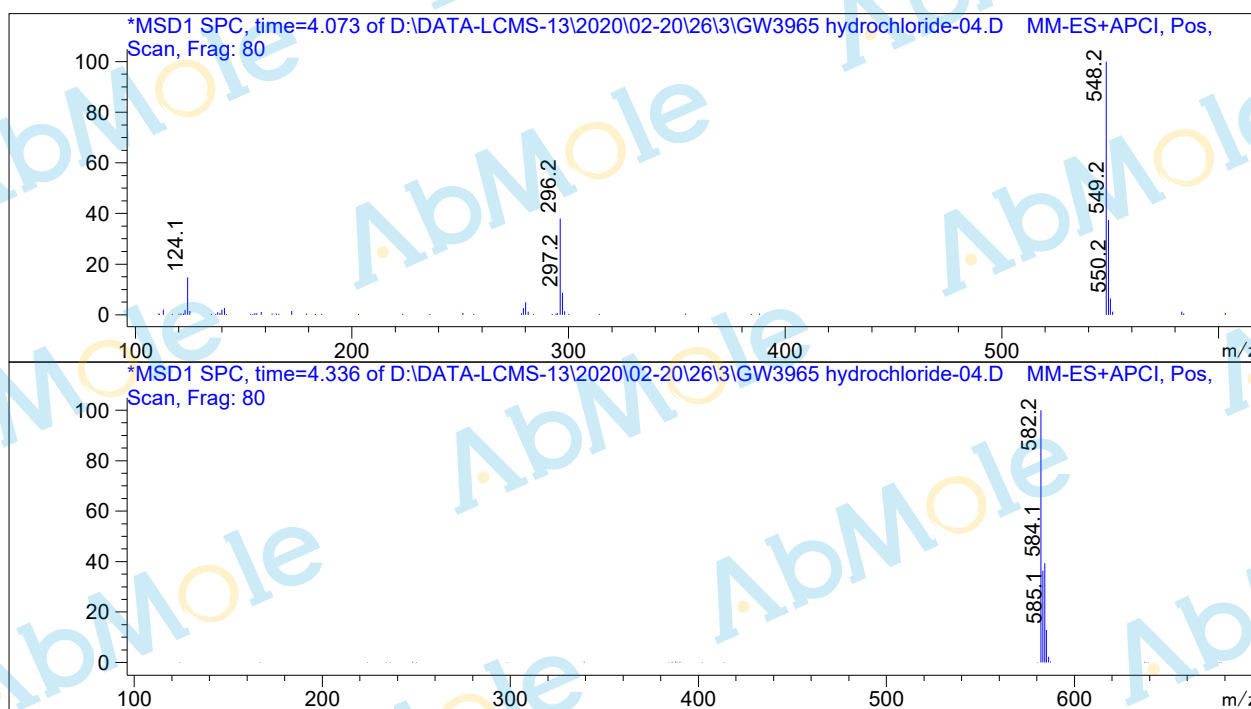
#	R.T.	Type	Height	Height%	Width	Area	Area %
1	4.038	MF	23.823	1.366	0.054	77.190	0.809
2	4.096	MF	9.306	0.534	0.046	25.820	0.271
3	4.319	FM	1710.809	98.100	0.092	9437.720	98.920

Signal 2: DAD1 B, Sig=254,8 Ref=off

#	R.T.	Type	Height	Height%	Width	Area	Area %
1	4.319	BB	83.476	100.000	0.085	449.648	100.000

Signal 3: MSD1 TIC, MS File

#	R.T.	Type	Height	Height%	Width	Area	Area %
1	4.066	BV	26679.805	1.846	0.084	142853.516	1.372
2	4.335	VB	1.419e+006	98.154	0.121	1.027e+007	98.628



*** End of Report ***