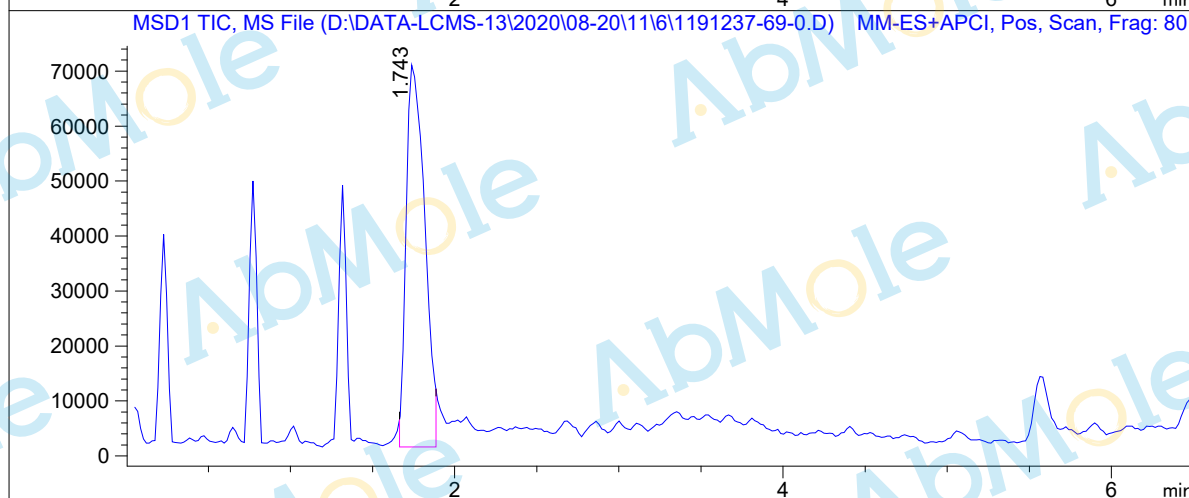
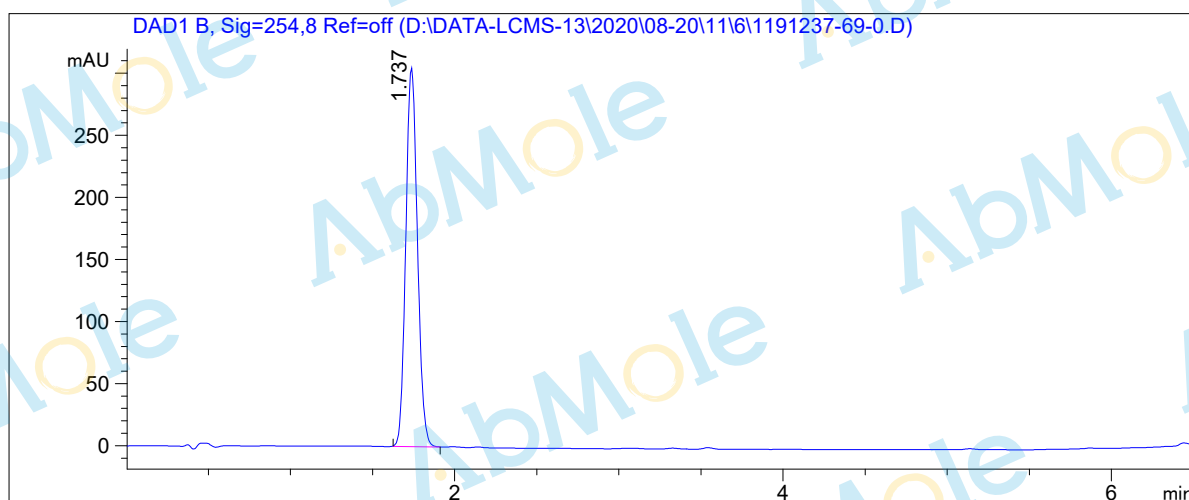


# LCMS Report

Sample Name : GS-441524-01  
Data File : D:\DATA-LCMS-13\2020\08-20\11\6\1191237-69-0.D  
Injection Date : Tue, 11. Aug. 2020 Inj. Vol. : 2ul  
Acq Operator : LCMS-13 Location : Vial 93  
Acq. Method : D:\data-lcms-13\2020\08-20\11\6\P-02-40-TFA.M  
Method Info. : column:Xbridge C18 5um 4.6\*50mm ;mobile phase:B (ACN)  
A(0.05%TFA) ; gradient(B%)!as Acq.Method above



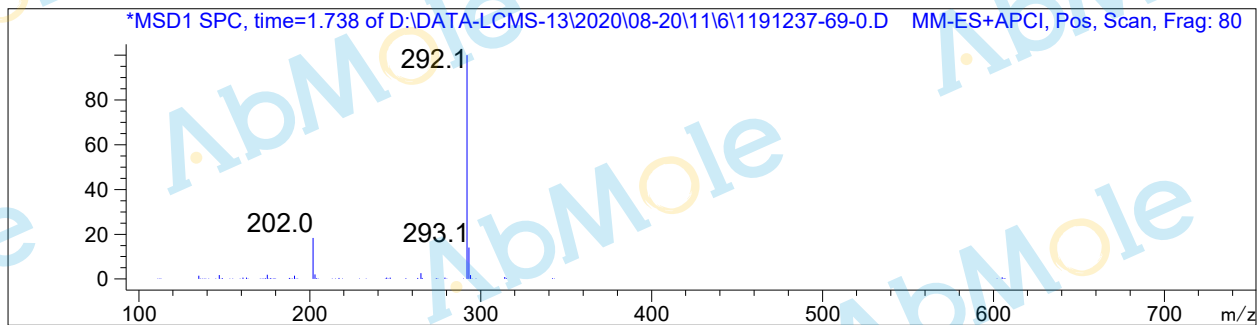
## Integration Results

Signal 1: DAD1 B, Sig=254,8 Ref=off

#	R.T.	Type	Height	Height%	Width	Area	Area %
1	1.737	BB	305.133	100.000	0.078	1504.209	100.000

Signal 2: MSD1 TIC, MS File

#	R.T.	Type	Height	Height%	Width	Area	Area %
1	1.743	MF	70306.773	100.000	0.129	543786.375	100.000



\*\*\* End of Report \*\*\*