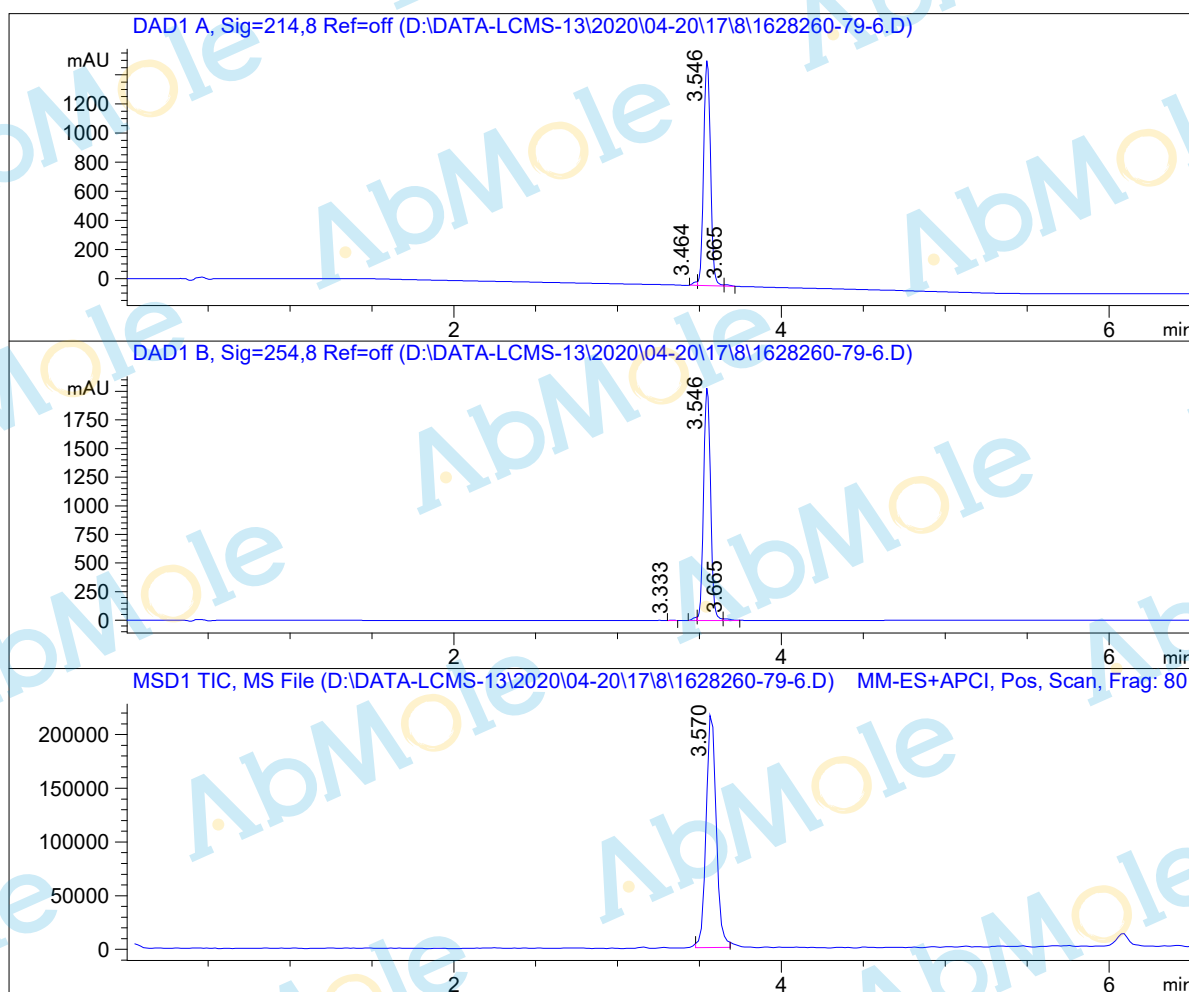


# LCMS Report

Sample Name : GLPG1690-03  
 Data File : D:\DATA-LCMS-13\2020\04-20\17\8\1628260-79-6.D  
 Injection Date : Sun, 19. Apr. 2020 Inj. Vol. : 3ul  
 Acq Operator : LCMS-13 Location : Vial 73  
 Acq. Method : D:\data-lcms-13\2020\04-20\17\8\P-05-95.M  
 Method Info. : column:Xbridge C18 5um 4.6\*30mm ;mobile phase:B (ACN)  
 A(0.02%NH4Ac); gradient(B%)!as Acq.Method above



## Integration Results

Signal 1: DAD1 A, Sig=214,8 Ref=off

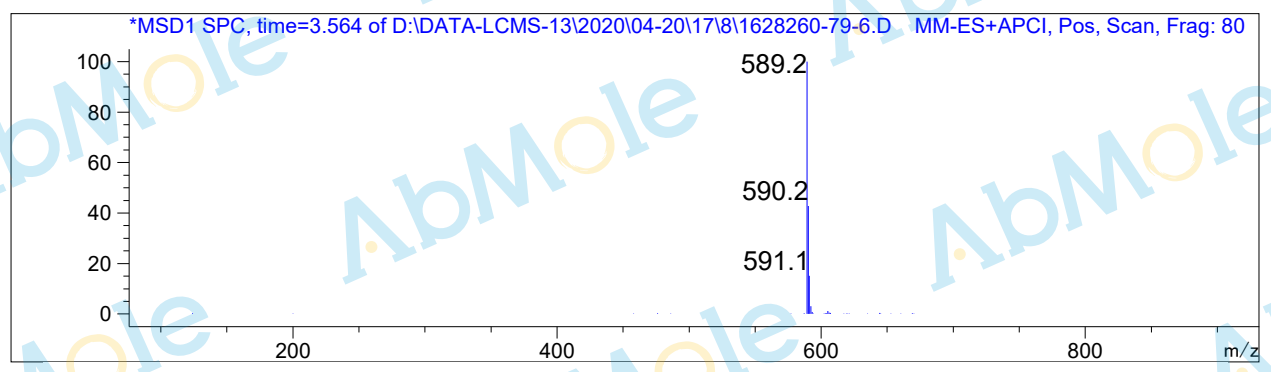
#	R.T.	Type	Height	Height%	Width	Area	Area %
1	3.464	MF	24.183	1.522	0.035	50.550	1.106
2	3.546	FM	1555.232	97.908	0.048	4495.963	98.394
3	3.665	FM	9.050	0.570	0.042	22.824	0.500

Signal 2: DAD1 B, Sig=254,8 Ref=off

#	R.T.	Type	Height	Height%	Width	Area	Area %
1	3.333	FM	2.134	0.102	0.042	5.339	0.088
2	3.485	MF	28.733	1.379	0.034	58.574	0.964
3	3.546	MF	2040.607	97.926	0.049	5975.286	98.311
4	3.665	FM	12.360	0.593	0.052	38.726	0.637

Signal 3: MSD1 TIC, MS File

#	R.T.	Type	Height	Height%	Width	Area	Area %
1	3.570	BB	221185.828	100.000	0.065	930259.563	100.000



\*\*\* End of Report \*\*\*