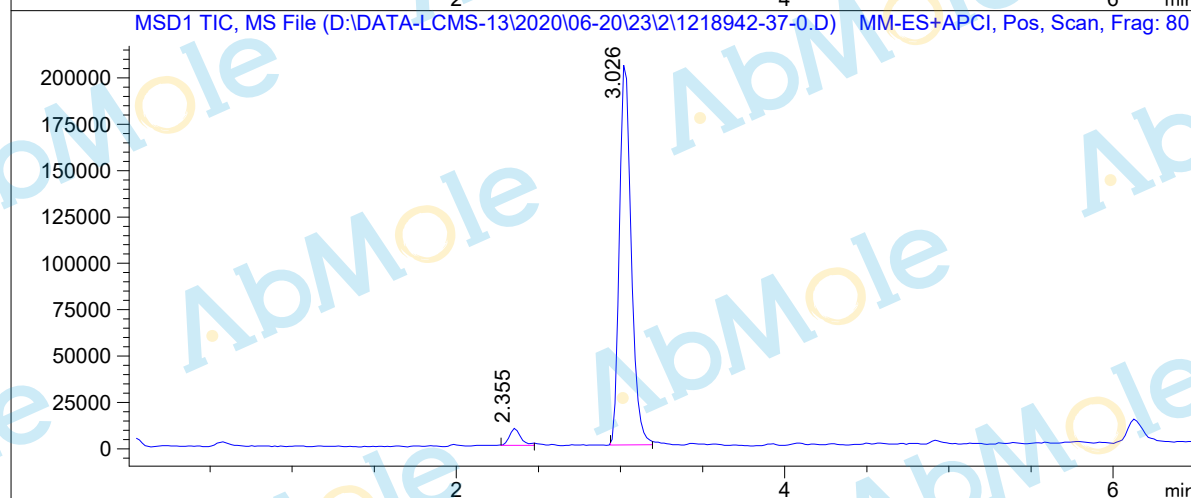
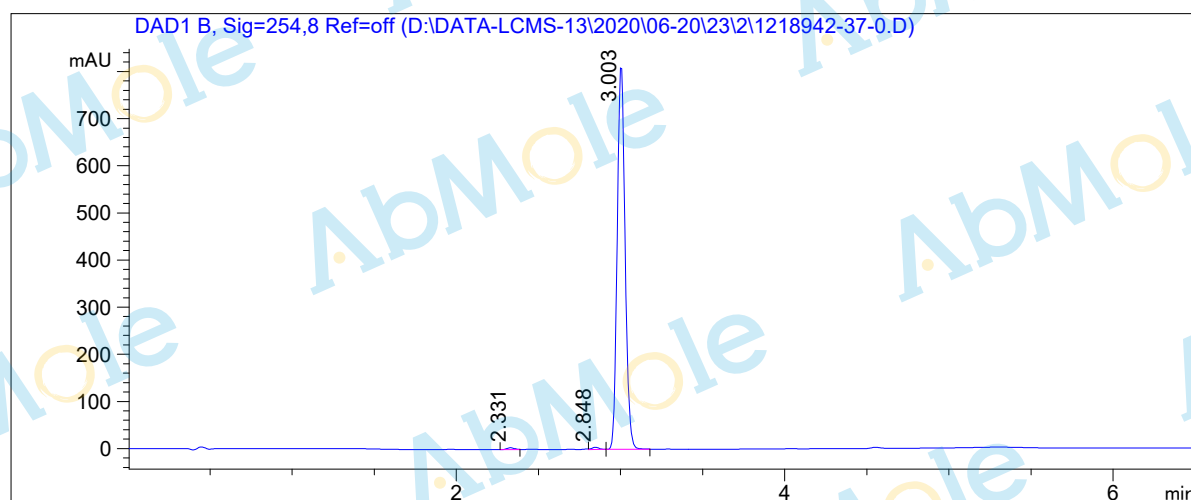


LCMS Report

Sample Name : GKT137831-03
Data File : D:\DATA-LCMS-13\2020\06-20\23\2\1218942-37-0.D
Injection Date : Tue, 23. Jun. 2020 Inj. Vol. : 1ul
Acq Operator : LCMS-13 Location : Vial 23
Acq. Method : D:\data-lcms-13\2020\06-20\23\2\P-05-95.M
Method Info. : column:Xbridge C18 5um 4.6*50mm ;mobile phase:B (ACN)
A(0.02%NH4Ac); gradient(B%)!as Acq.Method above



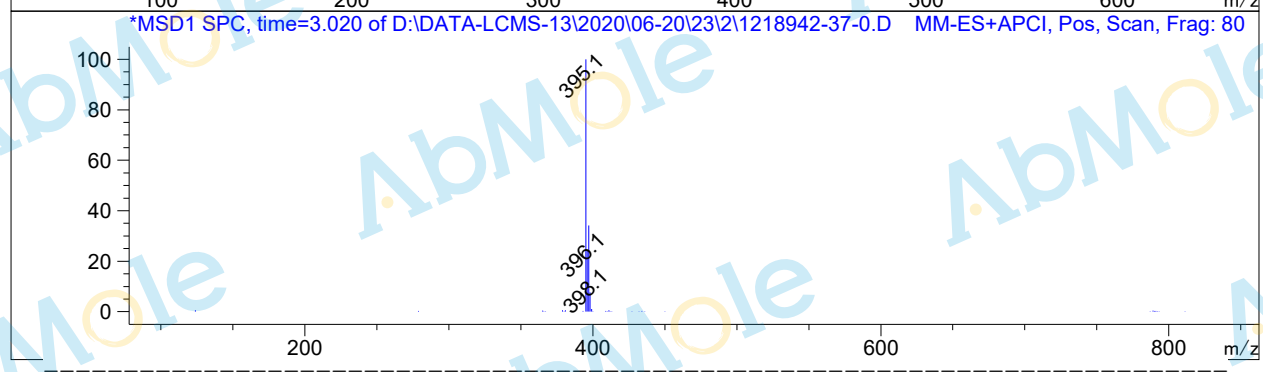
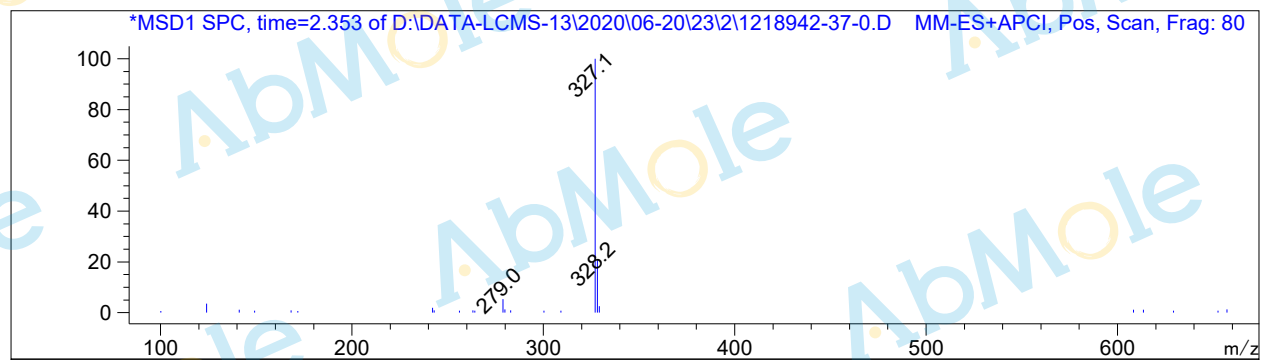
Integration Results

Signal 1: DAD1 B, Sig=254,8 Ref=off

#	R.T.	Type	Height	Height%	Width	Area	Area %
1	2.331	MF	3.941	0.475	0.055	13.005	0.476
2	2.848	FM	4.568	0.551	0.051	14.003	0.513
3	3.003	FM	820.427	98.974	0.055	2704.369	99.011

Signal 2: MSD1 TIC, MS File

#	R.T.	Type	Height	Height%	Width	Area	Area %
1	2.355	BB	9182.157	4.210	0.070	42939.148	4.002
2	3.026	BB	208906.875	95.790	0.079	1.030e+006	95.998



*** End of Report ***