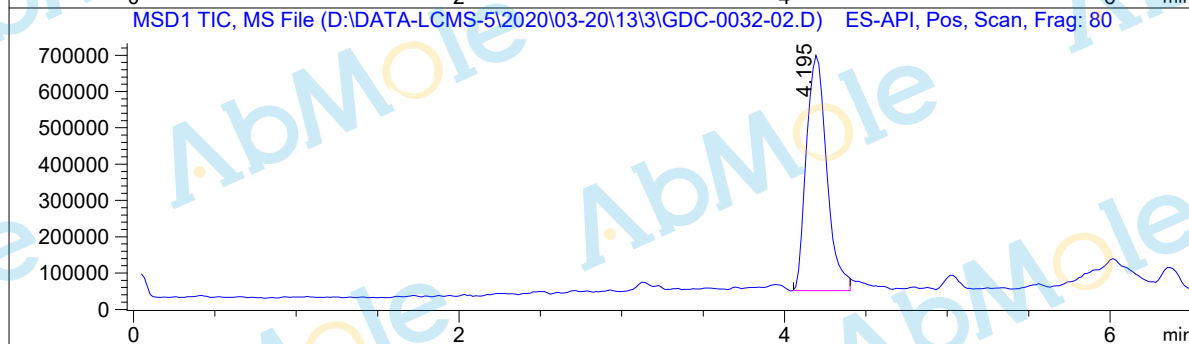
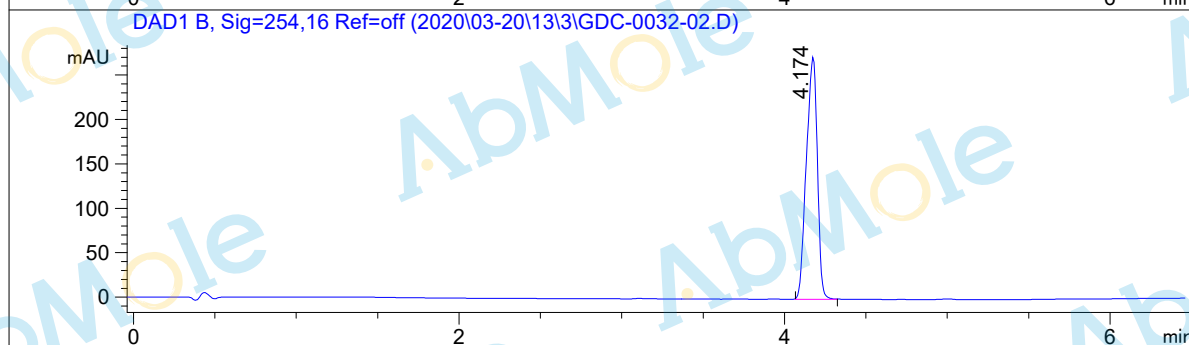
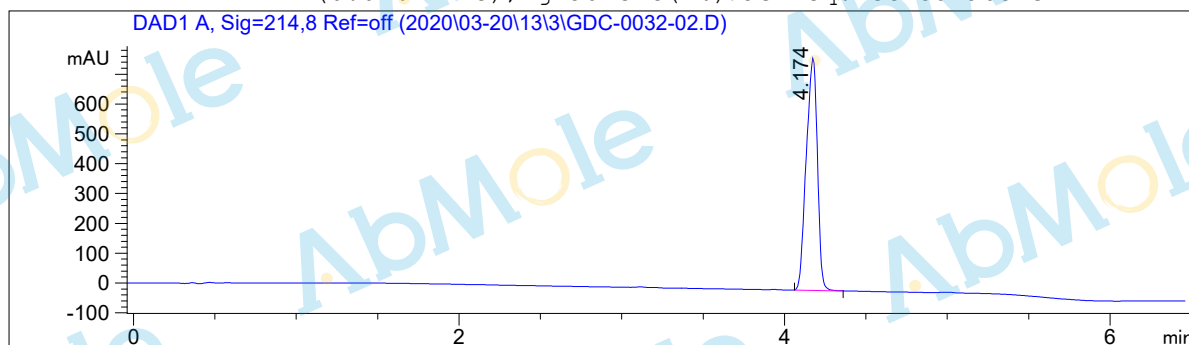


LCMS Report

Sample Name : GDC-0032-02
Data File : D:\DATA-LCMS-5\2020\03-20\13\3\GDC-0032-02.D
Injection Date : Fri, 13. Mar. 2020 Inj. Vol. : 3ul
Acq Operator : lcms-5 Location : Vial 44
Acq. Method : D:\data-lcms-5\2020\03-20\13\3\P-05-60.M
Method Info. : column:ZORBAX C18 5um 4.6*50mm ;mobile phase:B (ACN)
A(0.02%NH4Ac) ; gradient (B%)!as Acq.Method above



Integration Results

Signal 1: DAD1 A, Sig=214,8 Ref=off

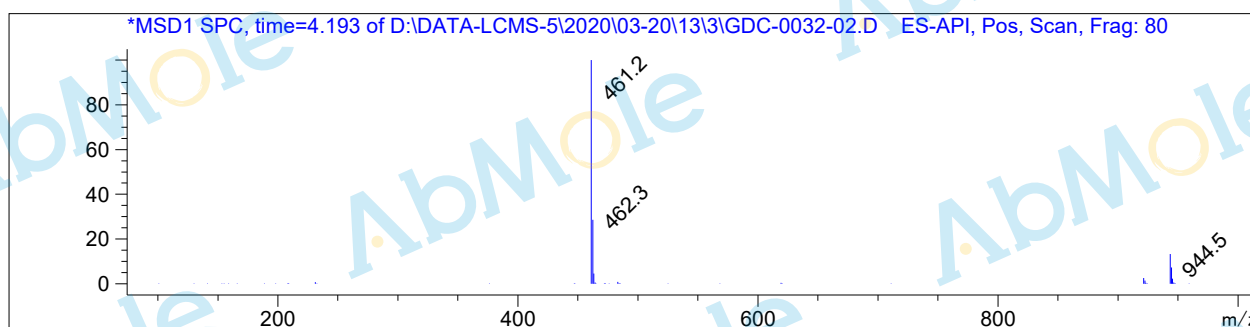
#	R.T.	Type	Height	Height%	Width	Area	Area %
1	4.174	BB	777.684	100.000	0.079	3696.367	100.000

Signal 2: DAD1 B, Sig=254,16 Ref=off

#	R.T.	Type	Height	Height%	Width	Area	Area %
1	4.174	MF	272.701	100.000	0.078	1278.790	100.000

Signal 3: MSD1 TIC, MS File

#	R.T.	Type	Height	Height%	Width	Area	Area %
1	4.195	MF	650410.750	100.000	0.144	5.619e+006	100.000



*** End of Report ***