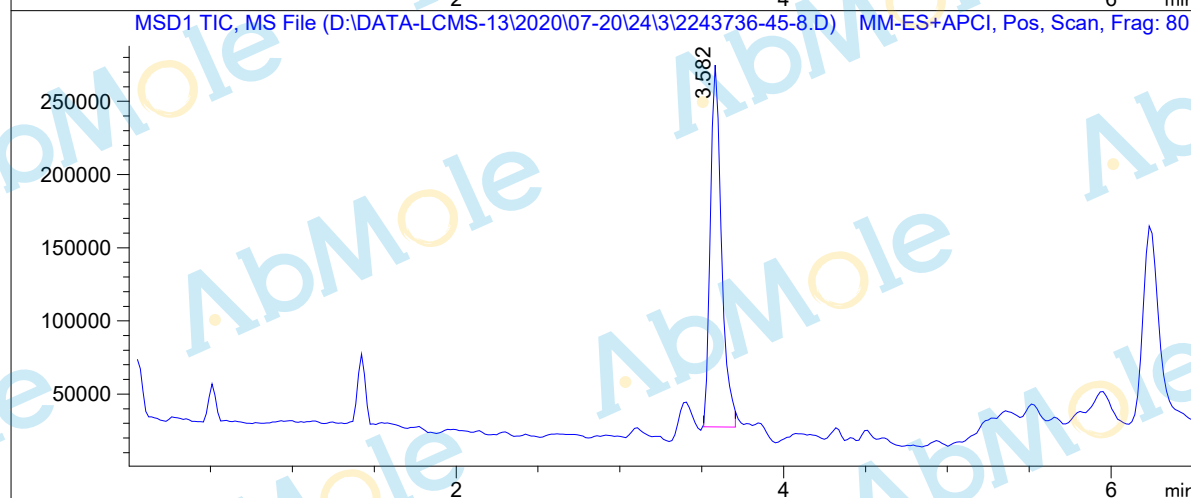
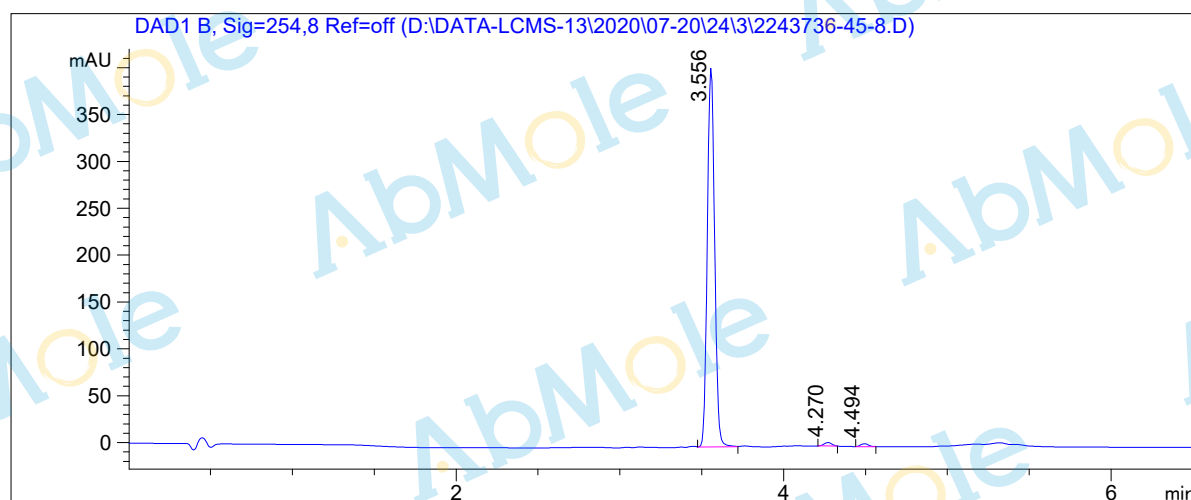


# LCMS Report

Sample Name : FB23-2-02  
Data File : D:\DATA-LCMS-13\2020\07-20\24\3\2243736-45-8.D  
Injection Date : Sat, 25. Jul. 2020 Inj. Vol. : 2ul  
Acq Operator : LCMS-13 Location : Vial 21  
Acq. Method : D:\data-lcms-13\2020\07-20\24\3\P-05-95-TFA.M  
Method Info. : column:Xbridge C18 5um 4.6\*50mm ;mobile phase:B (ACN)  
A(0.05%TFA) ; gradient(B%)!as Acq.Method above



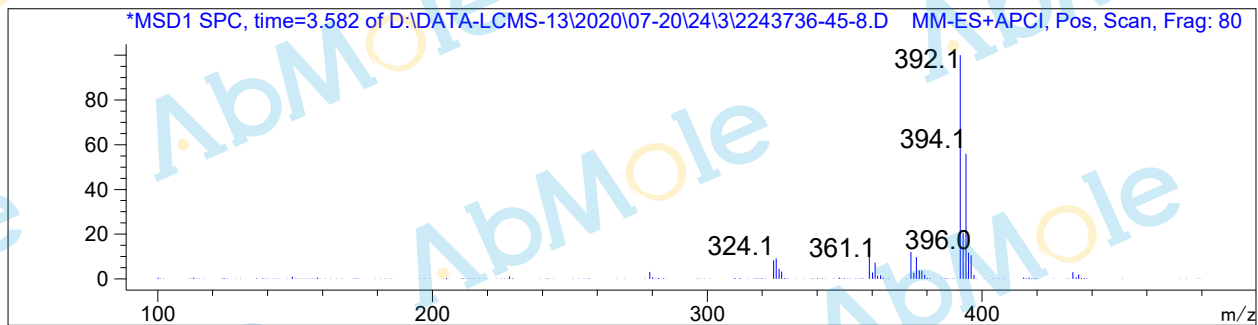
## Integration Results

Signal 1: DAD1 B, Sig=254,8 Ref=off

#	R.T.	Type	Height	Height%	Width	Area	Area %
1	3.556	MF	406.133	98.364	0.052	1262.713	98.288
2	4.270	MM	3.605	0.873	0.053	11.481	0.894
3	4.494	MM	3.151	0.763	0.056	10.510	0.818

Signal 2: MSD1 TIC, MS File

#	R.T.	Type	Height	Height%	Width	Area	Area %
1	3.582	BB	247333.766	100.000	0.071	1.170e+006	100.000



\*\*\* End of Report \*\*\*