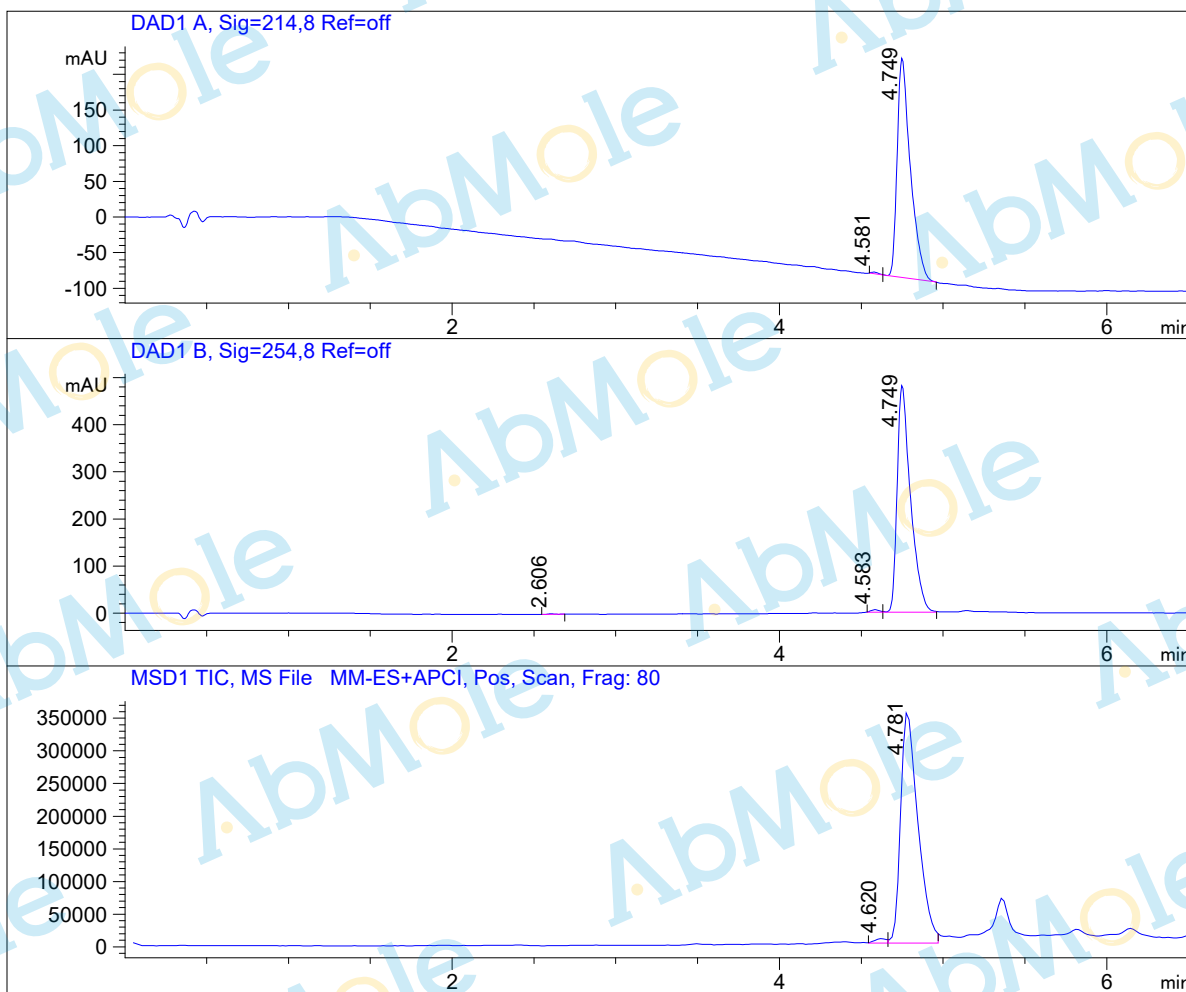


LC-MS Report

Sample Name : Everolimus-05
Data File : D:\DATA-LCMS-13\2019\11-19\29\4\Everolimus-05.D
Injection Date : Fri, 29. Nov. 2019 Inj. Vol. : 3ul
Acq Operator : LCMS-13 Location : Vial 68
Acq. Method : D:\data-lcms-13\2019\11-19\29\4\P-05-95.M
Method Info. : column:C18;column size:4.6*50mm ;mobile phase:B (ACN)
A(0.02%NH4Ac); gradient(B%)!as Acq.Method above



Integration Results

Signal 1: DAD1 A, Sig=214,8 Ref=off

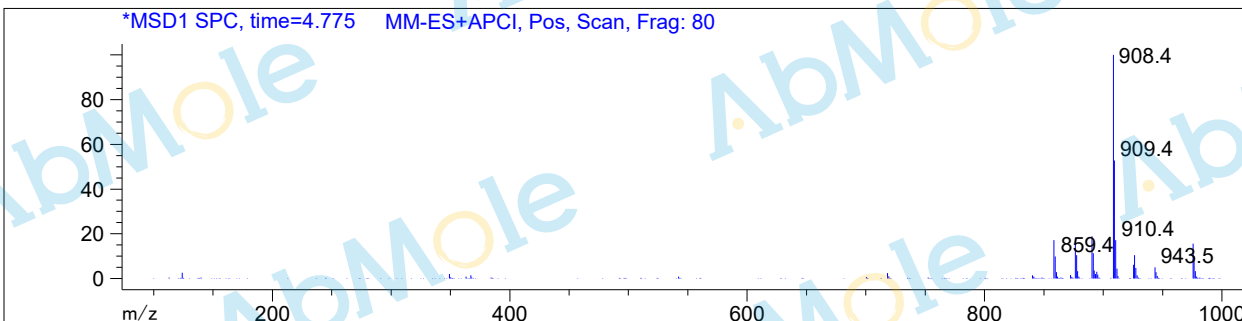
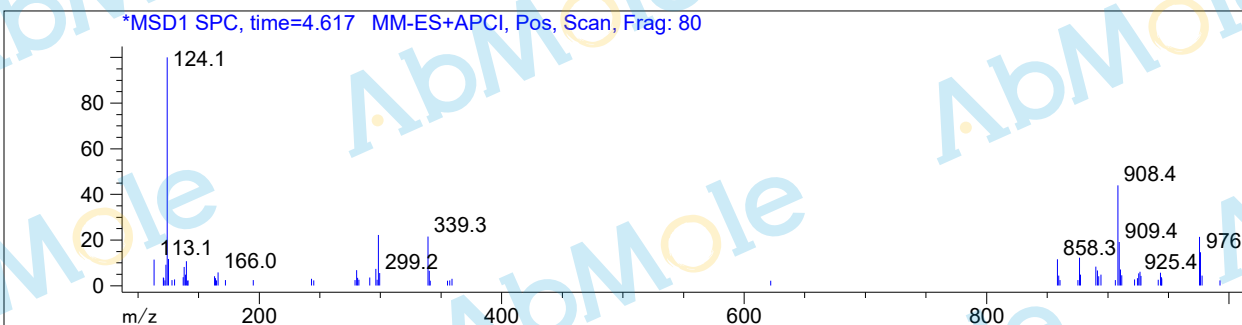
#	R.T.	Type	Height	Height%	Width	Area	Area %
1	4.581	MF	2.299	0.741	0.046	6.360	0.368
2	4.749	FM	308.139	99.259	0.093	1719.680	99.632

Signal 2: DAD1 B, Sig=254,8 Ref=off

#	R.T.	Type	Height	Height%	Width	Area	Area %
1	2.606	BB	1.175	0.240	0.043	3.140	0.114
2	4.583	MF	5.243	1.073	0.059	18.487	0.672
3	4.749	FM	482.429	98.687	0.094	2730.555	99.214

Signal 3: MSD1 TIC, MS File

#	R.T.	Type	Height	Height%	Width	Area	Area %
1	4.620	MF	6522.600	1.787	0.088	34428.426	1.303
2	4.781	FM	358487.656	98.213	0.121	2.609e+006	98.697



*** End of Report ***