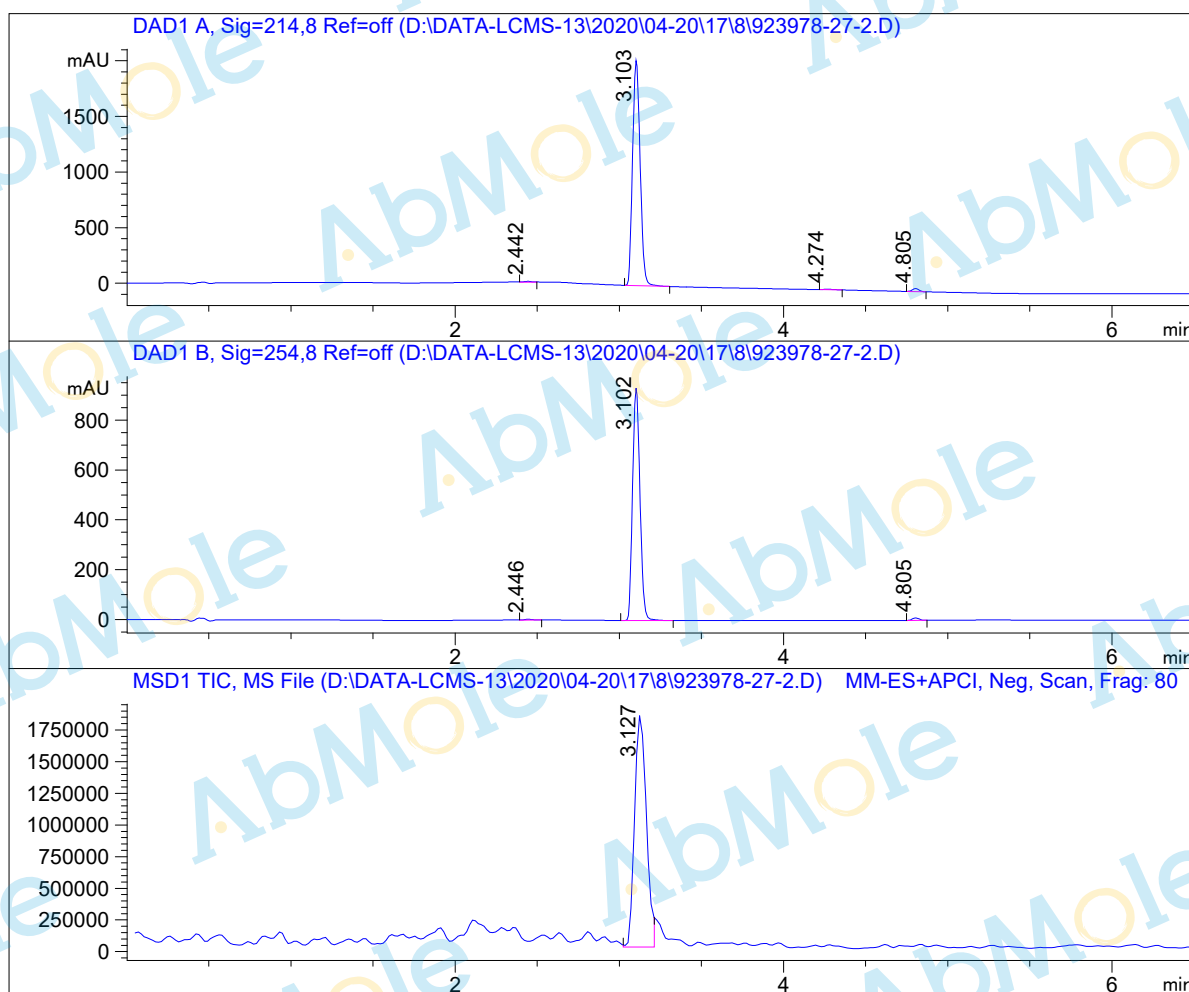


# LCMS Report

Sample Name : Elafibranor-01  
 Data File : D:\DATA-LCMS-13\2020\04-20\17\8\923978-27-2.D  
 Injection Date : Sun, 19. Apr. 2020 Inj. Vol. : 3ul  
 Acq Operator : LCMS-13 Location : Vial 72  
 Acq. Method : D:\data-lcms-13\2020\04-20\17\8\N-05-95.M  
 Method Info. : column:Xbridge C18 5um 4.6\*30mm ;mobile phase:B (ACN)  
 A(0.02%NH4Ac); gradient(B%)!as Acq.Method above



## Integration Results

Signal 1: DAD1 A, Sig=214,8 Ref=off

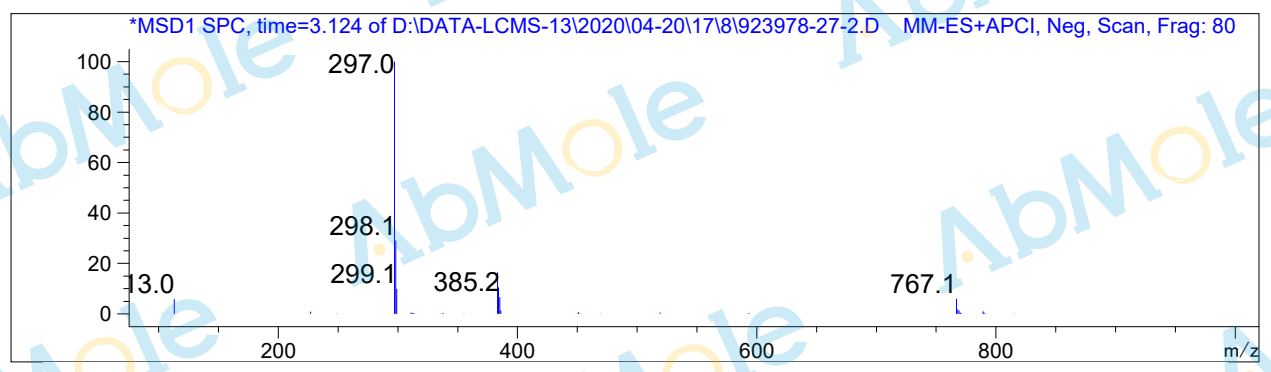
#	R.T.	Type	Height	Height%	Width	Area	Area %
1	2.442	MF	7.025	0.338	0.057	24.086	0.364
2	3.103	MM	2037.453	98.161	0.053	6493.154	98.178
3	4.274	MM	4.322	0.208	0.071	18.510	0.280
4	4.805	MF	26.821	1.292	0.048	77.898	1.178

Signal 2: DAD1 B, Sig=254,8 Ref=off

#	R.T.	Type	Height	Height%	Width	Area	Area %
1	2.446	BB	3.022	0.318	0.052	10.259	0.346
2	3.102	MM	938.667	98.635	0.052	2921.816	98.682
3	4.805	MF	9.970	1.048	0.048	28.756	0.971

Signal 3: MSD1 TIC, MS File

#	R.T.	Type	Height	Height%	Width	Area	Area %
1	3.127	MF	1.853e+006	100.000	0.082	9.167e+006	100.000



\*\*\* End of Report \*\*\*