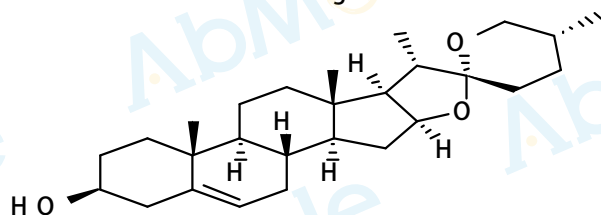


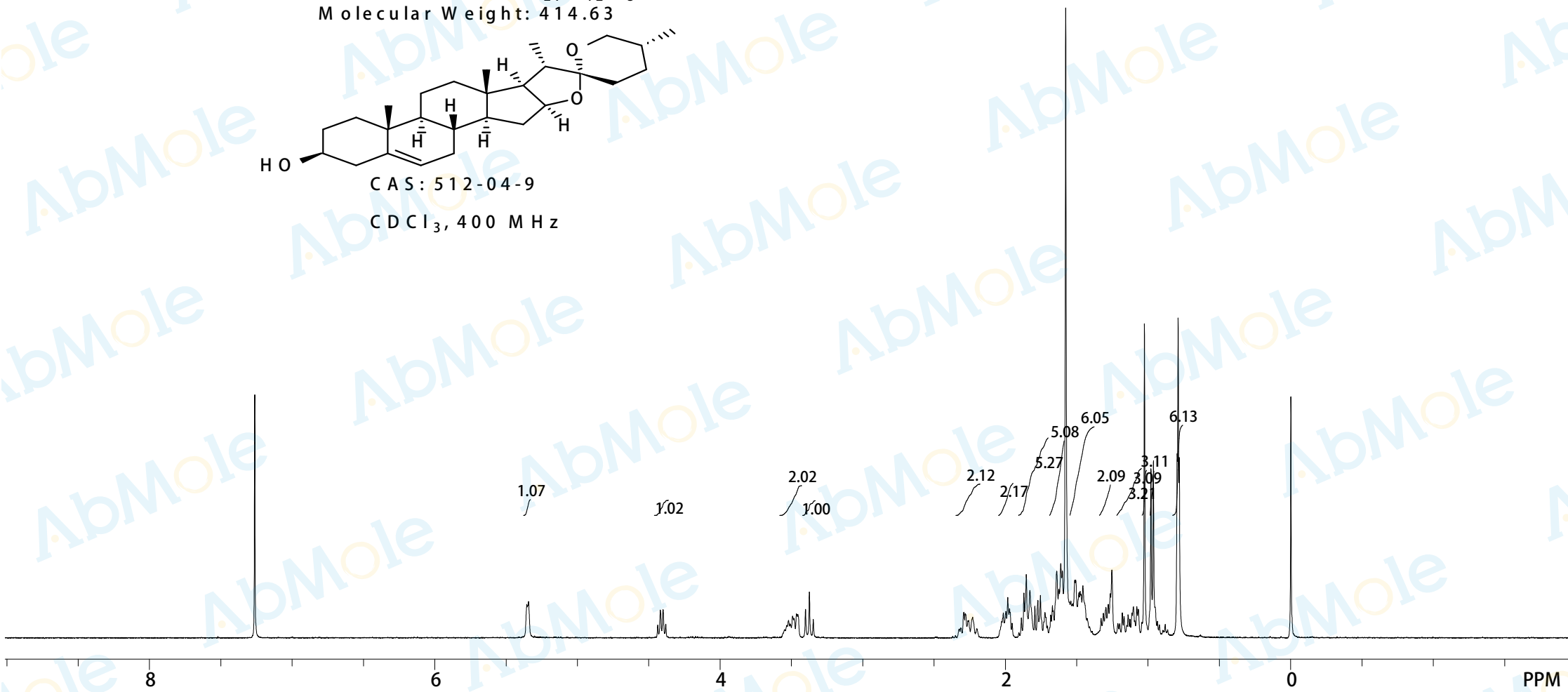
7.262
 5.355
 5.343
 4.419
 4.400
 3.465
 3.454
 3.401
 3.374
 2.291
 2.282
 2.229
 2.015
 1.997
 1.984
 1.971
 1.854
 1.829
 1.773
 1.755
 1.723
 1.671
 1.641
 1.626
 1.612
 1.601
 1.577
 1.514
 1.507
 1.484
 1.470
 1.457
 1.313
 1.279
 1.254
 1.181
 1.113
 1.102
 1.069
 1.026
 0.980
 0.962
 0.796
 0.790
 0.782
 -0.000

Chemical Formula: C₂₇H₄₂O₃
 Molecular Weight: 414.63



CAS: 512-04-9

CDCl₃, 400 MHz



PPM