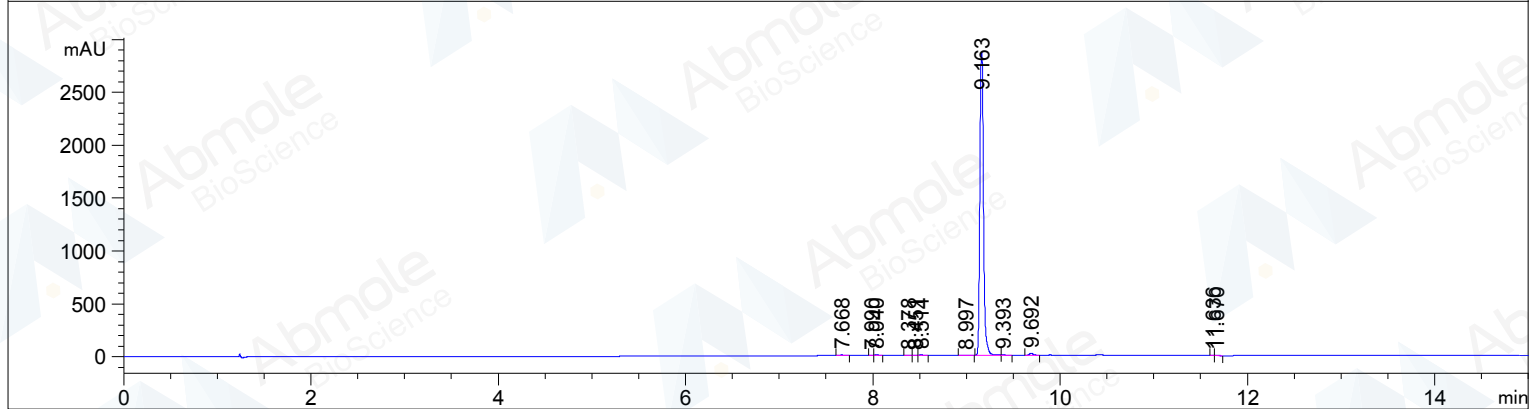
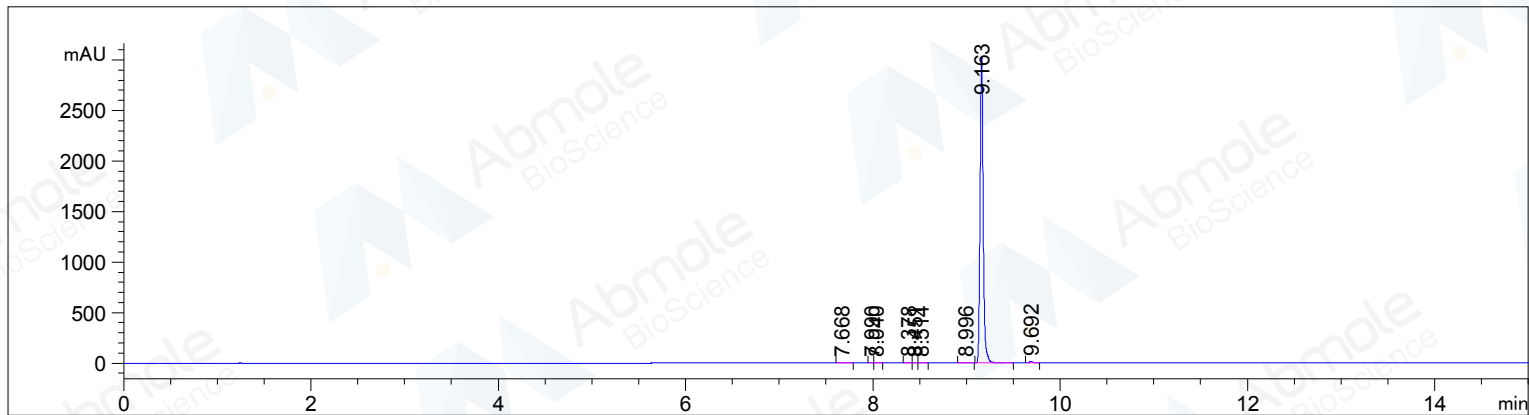


=====

Acq. Operator	: AbMole	Seq. Line	: 26
Acq. Instrument	: HPLC 1260	Location	: Vial 75
Injection Date	: 2016-6-5 2:34:07	Inj	: 1
		Actual Inj Volume	: 1.500 µl
Acq. Method	: D:\HPLC\DATA\2016\2016-06-04 18-30-08\ -ZBL.M		
Last changed	: 2016-6-3 18:39:09 : Xu Hui		
Analysis Method	: D:\HPLC\2016.06.03\ -ZBL.M		
Last changed	: 2016-6-10 18:14:15 : hu li (modified after loading)		
Methods Information	: XDB-C18 4.6mm*150mm 5um		



=====
Area Percent Report
=====

Sorted By : Signal
Multiplier : 1.0000
Dilution : 1.0000
Use Multiplier & Dilution Factor with ISTDs

Signal 1: DAD1 B, Sig=254,4 Ref=off

Peak #	RetTime [min]	Type	Width [min]	Area [mAU*s]	Height [mAU]	Area %
1	7.668	BB	0.0307	9.51417	4.59146	0.1336
2	7.990	VV	0.0286	3.39960	1.79564	0.0477
3	8.040	VV	0.0346	8.74416	3.76292	0.1228
4	8.378	BV	0.0308	6.69151	3.28633	0.0939
5	8.451	VV	0.0305	2.78203	1.37926	0.0391
6	8.514	VB	0.0323	9.33803	4.39915	0.1311

Peak #	RetTime [min]	Type	Width [min]	Area [mAU*s]	Height [mAU]	Area %
7	8.996	BB	0.0439	4.00055	1.30101	0.0562
8	9.163	BB	0.0358	7046.12207	3014.19165	98.9210
9	9.692	BB	0.0343	32.38736	14.34914	0.4547
Totals :				7122.97949	3049.05656	

Signal 2: DAD1 C, Sig=214,4 Ref=off

Peak #	RetTime [min]	Type	Width [min]	Area [mAU*s]	Height [mAU]	Area %
1	7.668	BB	0.0297	14.08023	7.07520	0.1794
2	7.990	BV	0.0273	3.48574	2.00604	0.0444
3	8.040	VV	0.0339	23.06938	10.20112	0.2939
4	8.378	BV	0.0305	7.65469	3.79722	0.0975
5	8.451	VV	0.0309	4.00846	2.04524	0.0511
6	8.514	VB	0.0322	11.37198	5.38121	0.1449
7	8.997	BB	0.0447	5.61988	1.76146	0.0716
8	9.163	BV	0.0415	7722.34033	2860.00830	98.3918
9	9.393	VV	0.0549	8.31983	2.02820	0.1060
10	9.692	BV	0.0354	41.41722	17.94532	0.5277
11	11.636	BV	0.0276	2.42173	1.37258	0.0309
12	11.670	VB	0.0344	4.77501	1.99818	0.0608
Totals :				7848.56450	2915.62008	

=====
*** End of Report ***