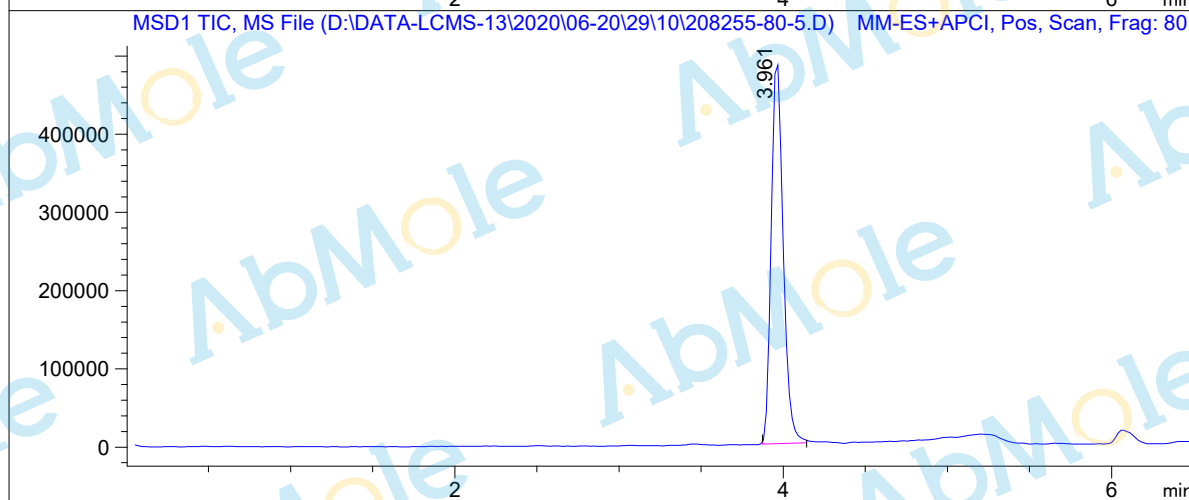
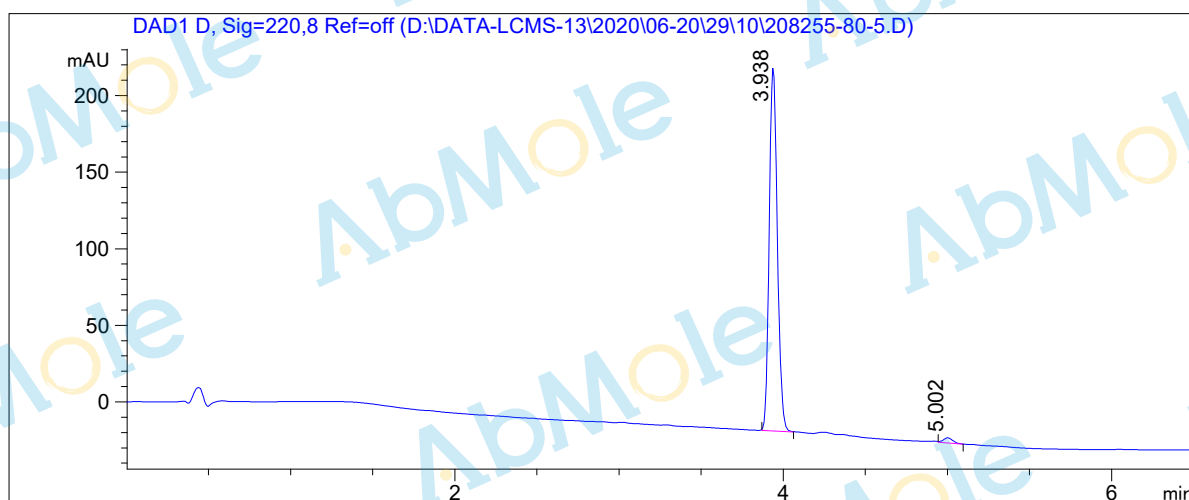


# LCMS Report

Sample Name : DAPT-05  
Data File : D:\DATA-LCMS-13\2020\06-20\29\10\208255-80-5.D  
Injection Date : Mon, 29. Jun. 2020 Inj. Vol. : 2ul  
Acq Operator : LCMS-13 Location : Vial 64  
Acq. Method : D:\data-lcms-13\2020\06-20\29\10\P-05-95.M  
Method Info. : column:Xbridge C18 5um 4.6\*50mm ;mobile phase:B (ACN)  
A(0.05%TFA) ; gradient (B%)!as Acq.Method above



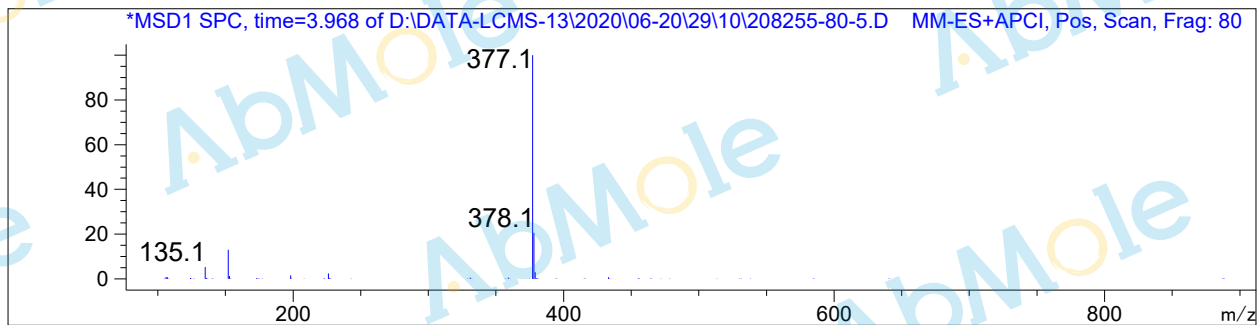
## Integration Results

Signal 1: DAD1 D, Sig=220,8 Ref=off

#	R.T.	Type	Height	Height%	Width	Area	Area %
1	3.938	BB	237.482	98.573	0.054	817.258	98.366
2	5.002	BB	3.437	1.427	0.060	13.572	1.634

Signal 2: MSD1 TIC, MS File

#	R.T.	Type	Height	Height%	Width	Area	Area %
1	3.961	BB	493853.688	100.000	0.080	2.479e+006	100.000



\*\*\* End of Report \*\*\*