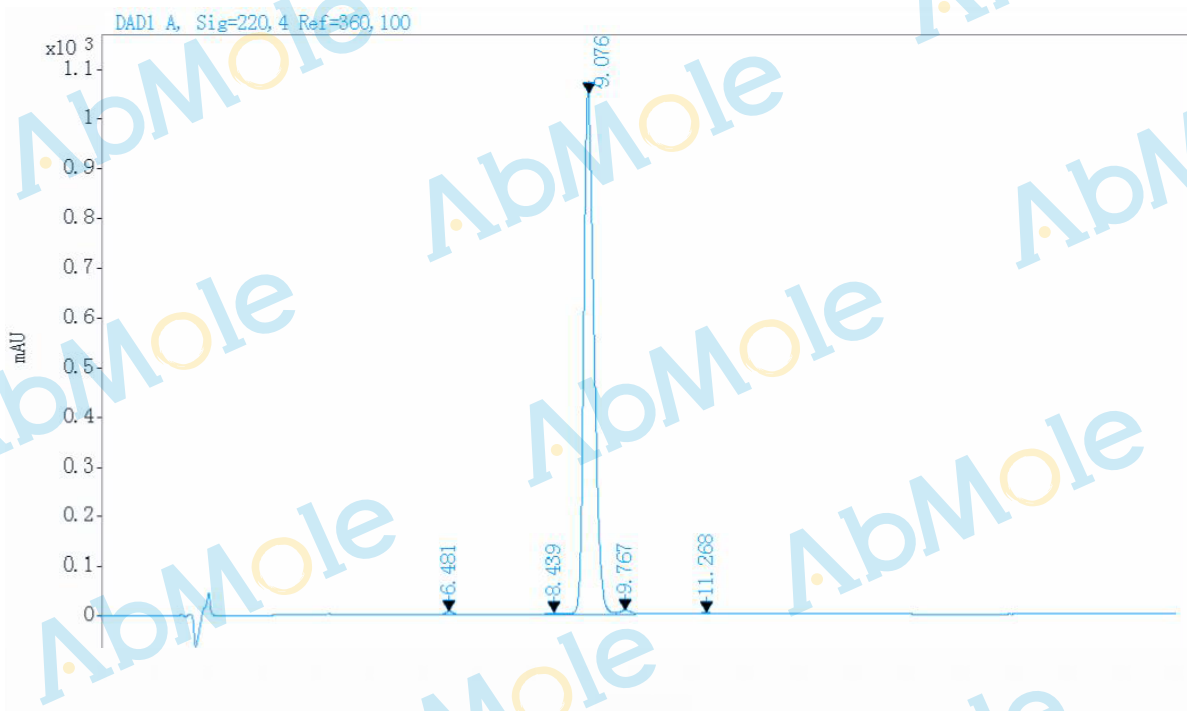


Data file: E:\DATA\180807\Ceruletide-01.D
Sample name: Ceruletide-01
Description: Mobile phase: Buffer A: 0.1%TFA in H2O
 Buffer B: 0.1%TFA in ACN
 Gradient: 25-35% in 30min, Flow rate: 1.0ml/min
 Column: Unitary C18, 4.6*150mm, 5um 100A (A-001)
 Instrument: Agilent HPLC 1100

Instrument: QC
Injection date: 2018/8/7 15:15:12
Last changed: 2018/8/7 15:58:42
Location: 2
Injection: 1 of 1
Injection volume: 10.000
Acq. operator: QC_1



Signal: DAD1 A, Sig=220, 4 Ref=360, 100

RT[min]	Type	Width[min]	Area	Height	Area%	Name
6.481	BBA	0.1694	62.5715	6.0128	0.4414	
8.439	VV F	0.2189	41.0324	2.8016	0.2895	
9.076	VV B	0.2121	13917.4287	1040.1698	98.1825	
9.767	VB	0.2274	117.4034	7.9901	0.8282	
11.268	BBA	0.2118	36.6222	2.7426	0.2584	
	Sum		14175.0582			