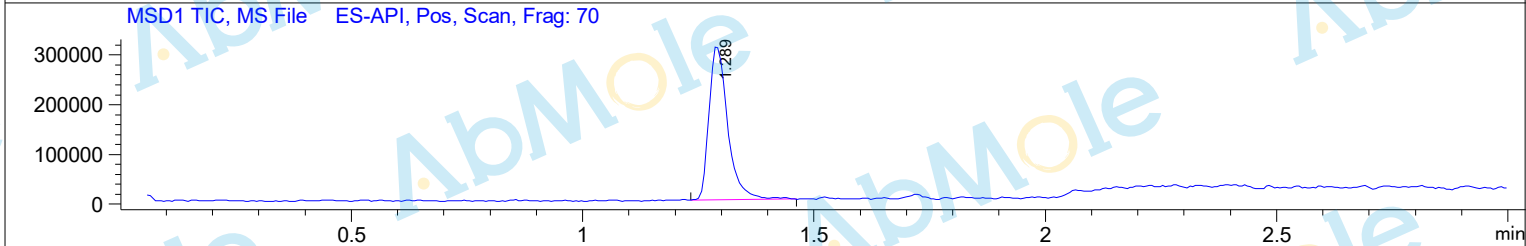
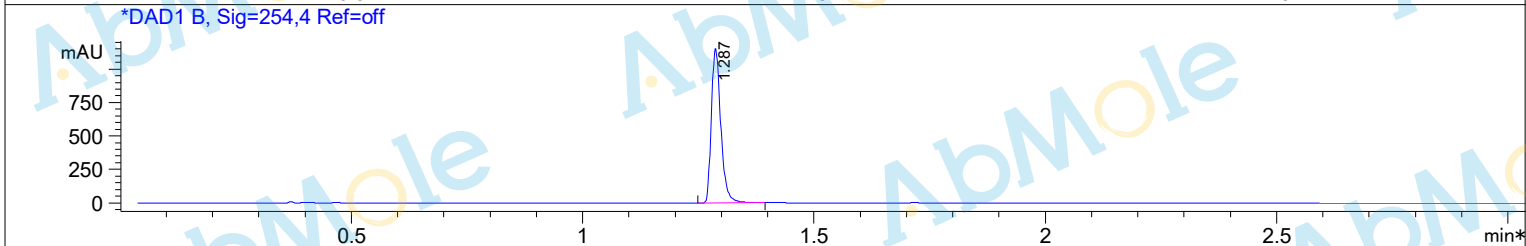
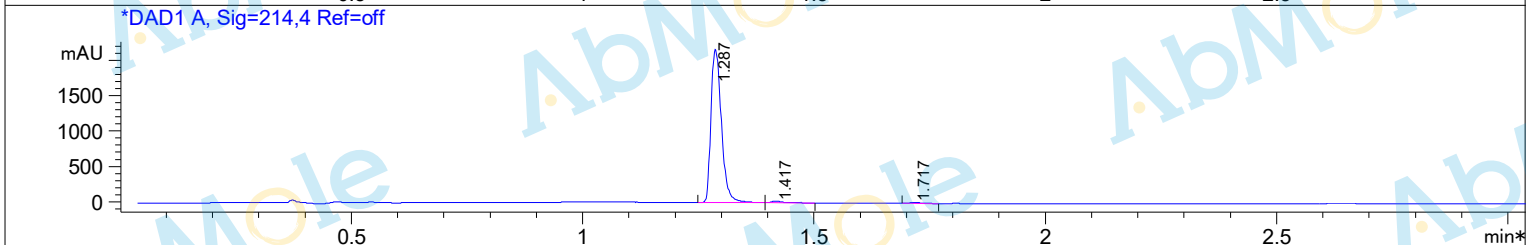
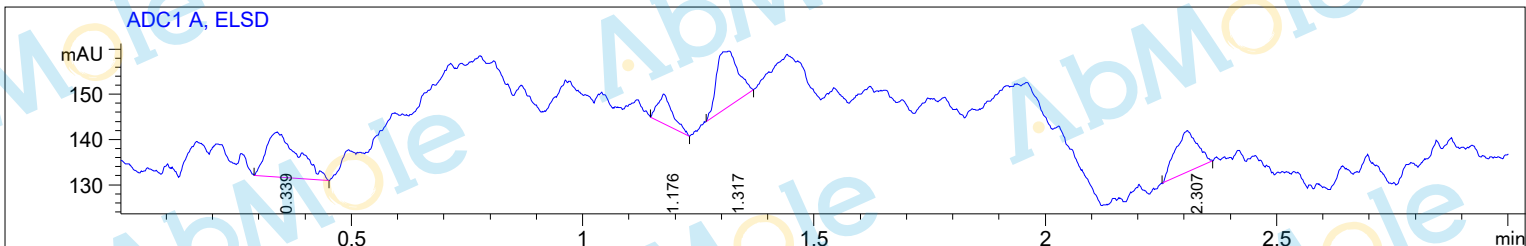


LC/MS Report

Injection Date : 23 Feb 21  
 Sample Name : Cariporide-01  
 Method Info : Mobile Phase: A: water(0.01%TFA) B: ACN(0.01%TFA)  
 Gradient: 5% increase to 95%B within 1.3 min, 95%B for 1.7 min.  
 Flow Rate: 2.0ml/min  
 Column:Sunfire C18,4.6\*50mm,3.5um  
 Column Temperature: 45 C  
 Detection:UV (214,4nm) and MS(ESI,Pos mode,110 to 1000 amu)



Integration Results for DAD1 A, Sig=214,4 Ref=off

RetTim	Width	Area	Height	Area%
1.29	0.02	3427.57	2170.16	98.16
1.42	0.02	39.66	22.90	1.14
1.72	0.02	24.64	16.34	0.71

Integration Results for DAD1 B, Sig=254,4 Ref=off

RetTim	Width	Area	Height	Area%
1.29	0.02	1652.27	1159.03	100.00

Ret. Time: 1.29

<<<< POSITIVE SPECTRA >>>>

