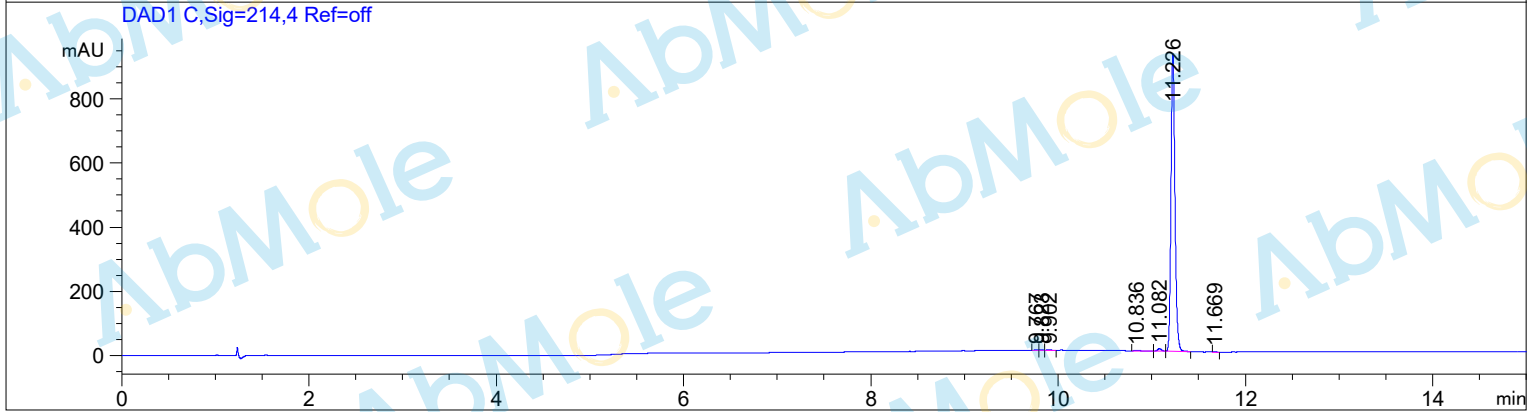
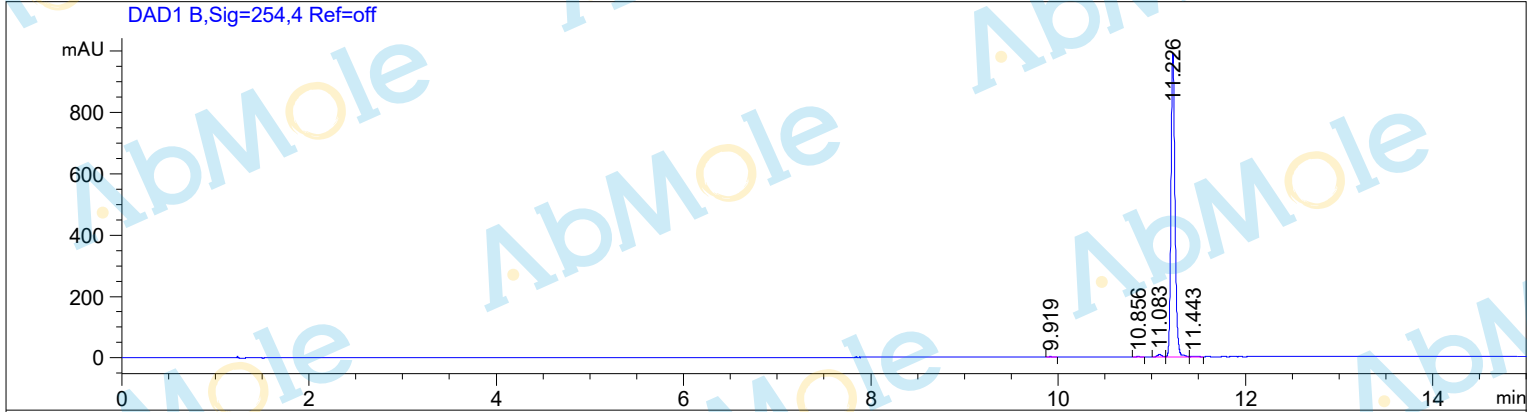


Sample Name: Calcitriol-01

```

=====
Acq. Operator   : Abmole                               Seq. Line : 25
Acq. Instrument : HPLC 1260                           Location  : Vial 74
Injection Date  : 2019-9-10 15:29:44                 Inj Volume: 1.500 ul
Acq. Method    : D:\HPLC\DATA\2019\zhang bailin 2019-09-10 18-30-08\ ZBL.M
Last changed   : 2019-9-10 18:39:09 : Xu Hui
Acq. Method    : D:\HPLC\ DATA \20190910\ZBL.M
Last changed   : 2019-9-10 18:14:15 : hu li
                (modified after loading)
Column        : XDB-C18 4.6mm*150mm 5um
    
```

Additional Info : Peak(s) manually integrated



Area Percent Report

```

=====
Sorted By : Signal
Multiplier : 1.0000
Dilution : 1.0000
Use Multiplier & Dilution Factor with ISTDs
    
```

signal 1: DAD1 B, Sig=254,4 Ref=off

Peak #	RetTime [min]	Type	Width [min]	Area [mAU*s]	Height [mAU]	Area %
1	9.919	VV	0.0534	4.07916	1.19295	0.1370
2	10.856	BB	0.0447	3.25392	1.09333	0.1093
3	11.083	BV	0.0487	25.68338	8.15930	0.8624
4	11.226	VV	0.0451	2938.01953	989.51831	98.6495
5	11.443	VB	0.0601	7.20459	1.64405	0.2419

Sample Name: Calcitriol-01

Peak #	RetTime [min]	Type	Width [min]	Area [mAU*s]	Height [mAU]	Area %
Totals :				2978.24058	1001.60794	

signal 2: DAD1 C, Sig=214,4 Ref=off

Peak #	RetTime [min]	Type	Width [min]	Area [mAU*s]	Height [mAU]	Area %
1	9.767	BV	0.0366	5.23202	2.25385	0.1868
2	9.823	VB	0.0345	3.10248	1.44764	0.1108
3	9.902	BB	0.0497	4.98014	1.48180	0.1778
4	10.836	BV	0.0662	7.80168	1.52547	0.2785
5	11.082	VV	0.0490	25.52746	7.93352	0.9114
6	11.226	VB	0.0456	2750.05835	927.54413	98.1874
7	11.669	VB	0.0334	4.12300	1.85906	0.1472
Totals :				2800.82512	944.04548	

=====  
\*\*\* End of Report \*\*\*