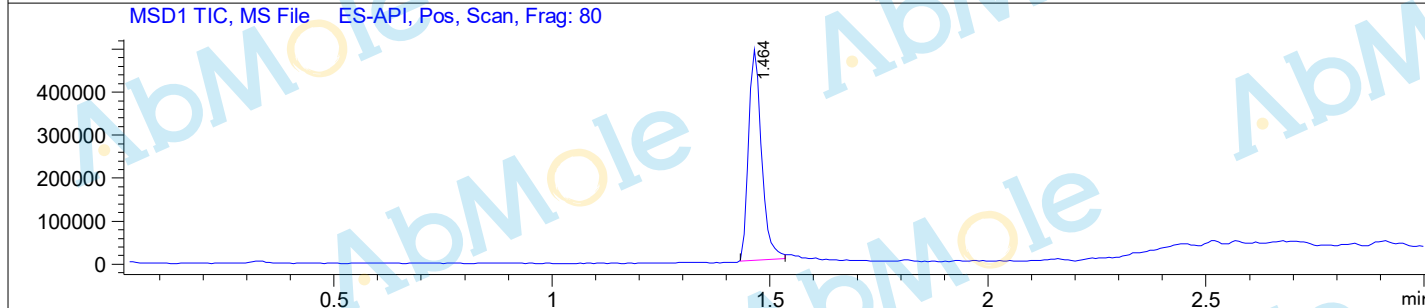
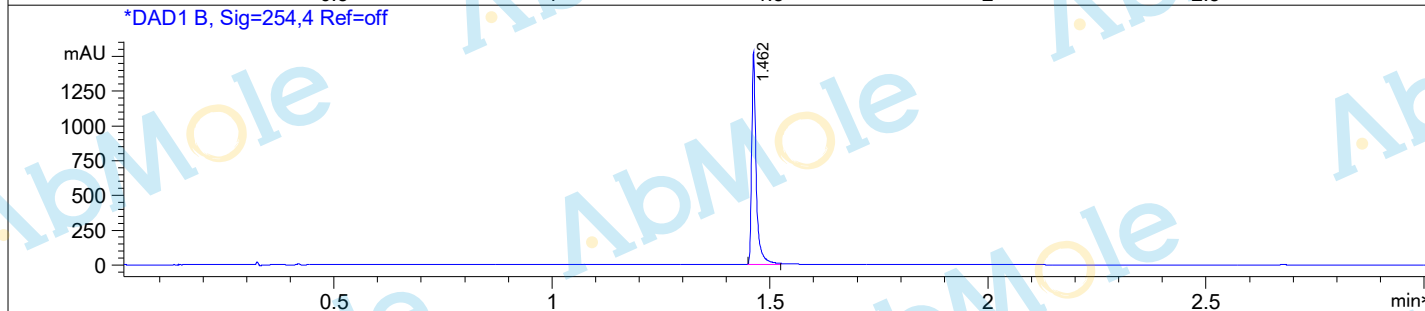
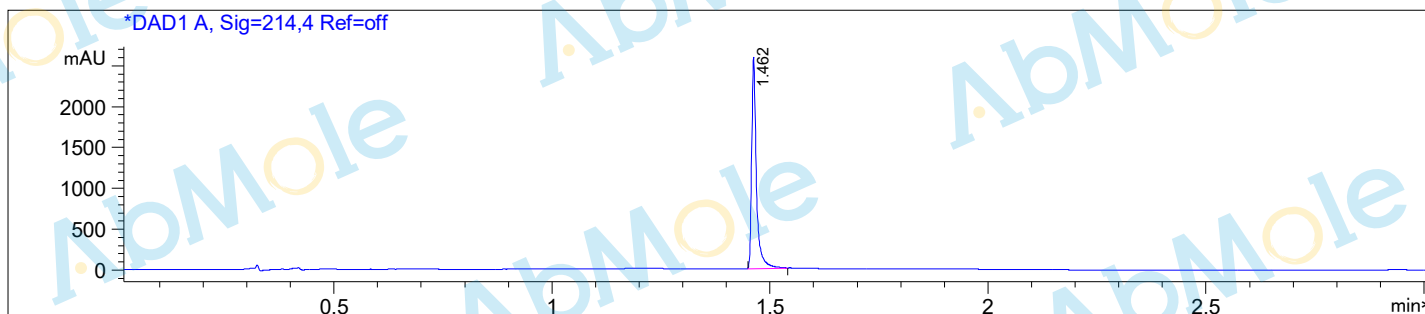


File D:\DATA\  
Injection Date : 18 Jul 18 12:29 pm +0800 Tgt Mass (EZX) :  
Sample Name : CP 673451-01 Location :  
Acq. Operator : Inj : 1  
Spec. Reported : MS Integration Inj Volume : 2 ul  
Acq. Method : D:\METHODS\1-POS-3MIN.M  
Analysis Method : D:\METHODS\1-POS-3MIN.M  
Sample Info : Easy-Access Method: '1-POS-3MIN.M'  
Method Info : Column: SUNFIRE C18 4.6X50mm, 3.5um  
Mobile phase: H2O(0.01%TFA) (A) / ACN(0.01% TFA) (B)  
Elution program: Gradient from 5 to 95% of B in 1.4min at 2.0ml/min  
Temperature: 45°C  
Detection: UV (214 , 4 nm) and MS (ESI, POS mode , 113 to 1200 amu)



Integration Results for DAD1 A, Sig=214,4 Ref=off

RetTim	Width	Area	Height	Area%
1.46	0.01	1996.29	2570.23	100.00

Integration Results for DAD1 B, Sig=254,4 Ref=off

RetTim	Width	Area	Height	Area%
1.46	0.01	1113.20	1513.13	100.00

Ret. Time: 1.46

<<<< POSITIVE SPECTRA >>>>

