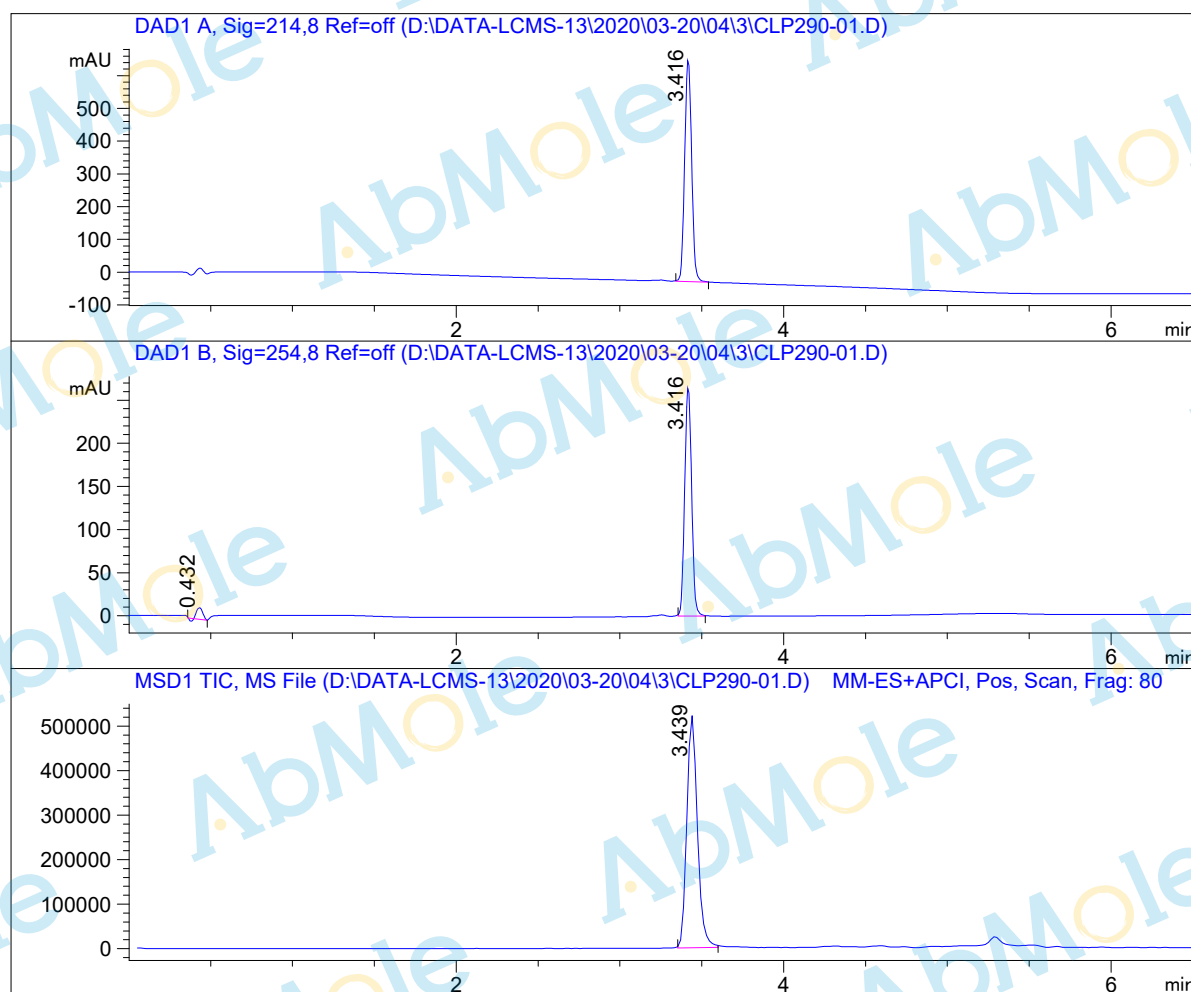


LCMS Report

Sample Name : CLP290-01
Data File : D:\DATA-LCMS-13\2020\03-20\04\3\CLP290-01.D
Injection Date : Wed, 4. Mar. 2020 Inj. Vol. : 2ul
Acq Operator : LCMS-13 Location : Vial 61
Acq. Method : D:\data-lcms-13\2020\03-20\04\3\P-10-95.M
Method Info. : column:Xbridge C18 5um 4.6*30mm ;mobile phase:B (ACN)
A(0.02%NH4Ac); gradient(B%)!as Acq.Method above



Integration Results

Signal 1: DAD1 A, Sig=214,8 Ref=off

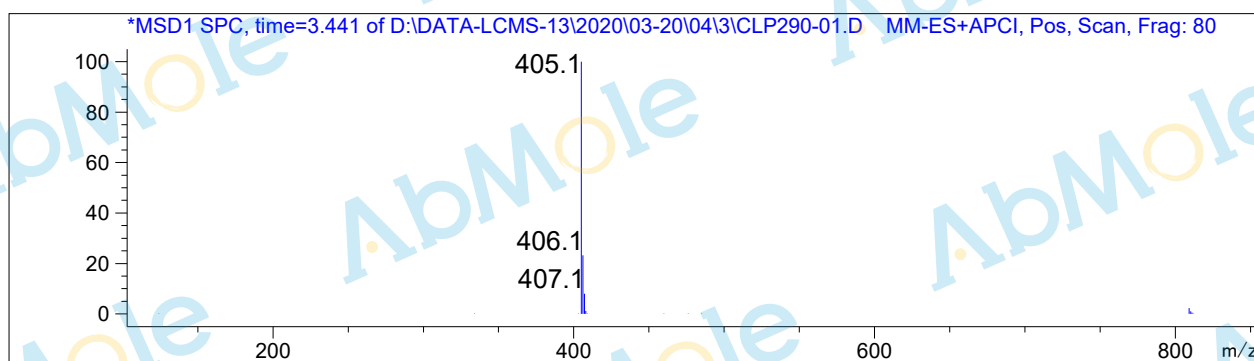
#	R.T.	Type	Height	Height%	Width	Area	Area %
1	3.416	BB	677.929	100.000	0.046	2001.364	100.000

Signal 2: DAD1 B, Sig=254,8 Ref=off

#	R.T.	Type	Height	Height%	Width	Area	Area %
1	0.432	BV	13.445	4.820	0.041	31.075	3.826
2	3.416	BB	265.481	95.180	0.046	781.106	96.174

Signal 3: MSD1 TIC, MS File

#	R.T.	Type	Height	Height%	Width	Area	Area %
1	3.439	BB	522230.688	100.000	0.068	2.341e+006	100.000



*** End of Report ***