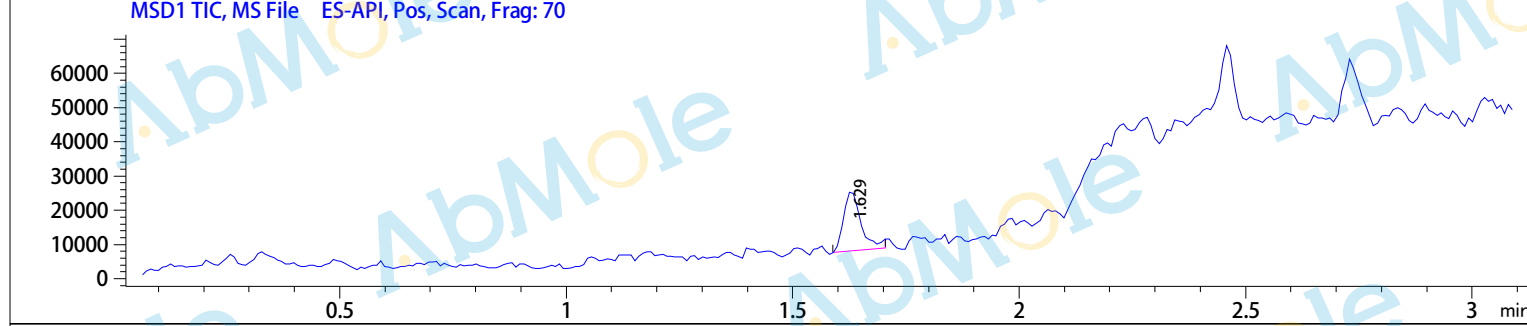
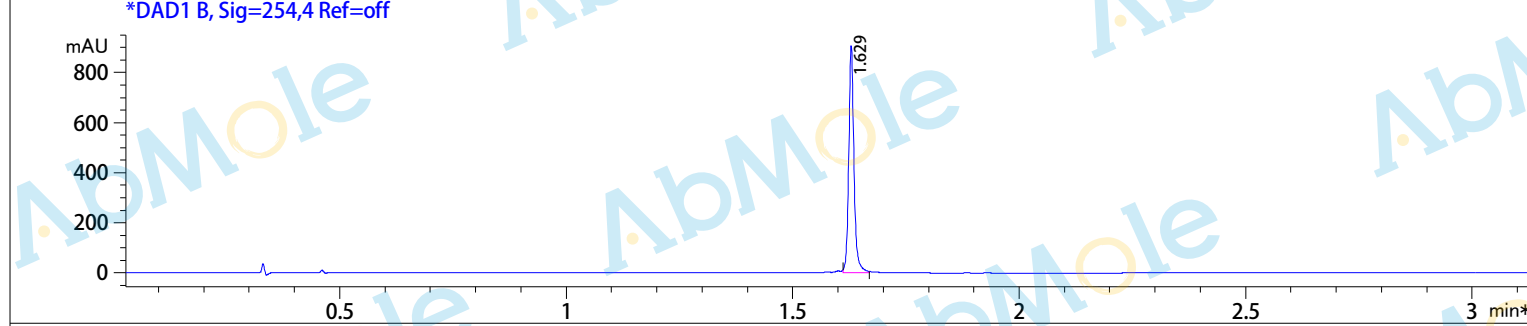
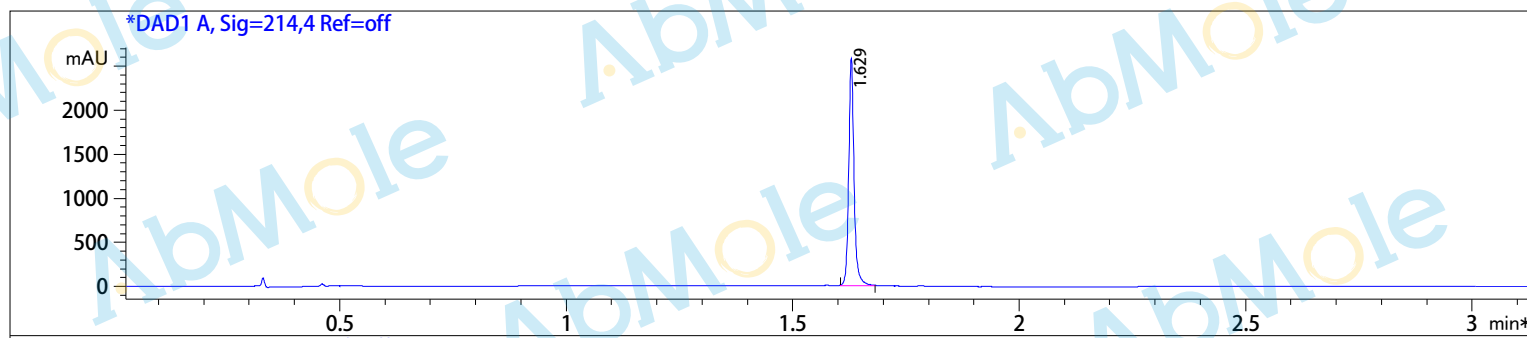


Injection Date : 16 Oct 20
 Sample Name : CID5721353-01
 Method Info : Column:SunFire C18 (4.6x 50 mm,3.5 um)
 Mobile phase: H2O(0.01%TFA) (A) / ACN(0.01%TFA)(B)
 Elution program: Gradient from 10 to 95% of B in 1.4 min at 2ml/min
 Temperature: 50 °C
 Detection: UV (214 , 4 nm) and MS (ESI, Pos mode ,110 to 1000 amu)



Integration Results for DAD1 A, Sig=214,4 Ref=off

RetTim	Width	Area	Height	Area%
1.63	0.01	2136.56	2571.90	100.00

Integration Results for DAD1 B, Sig=254,4 Ref=off

RetTim	Width	Area	Height	Area%
1.63	0.01	725.18	902.83	100.00

Ret. Time: 1.63

<<< POSITIVE SPECTRA >>>

