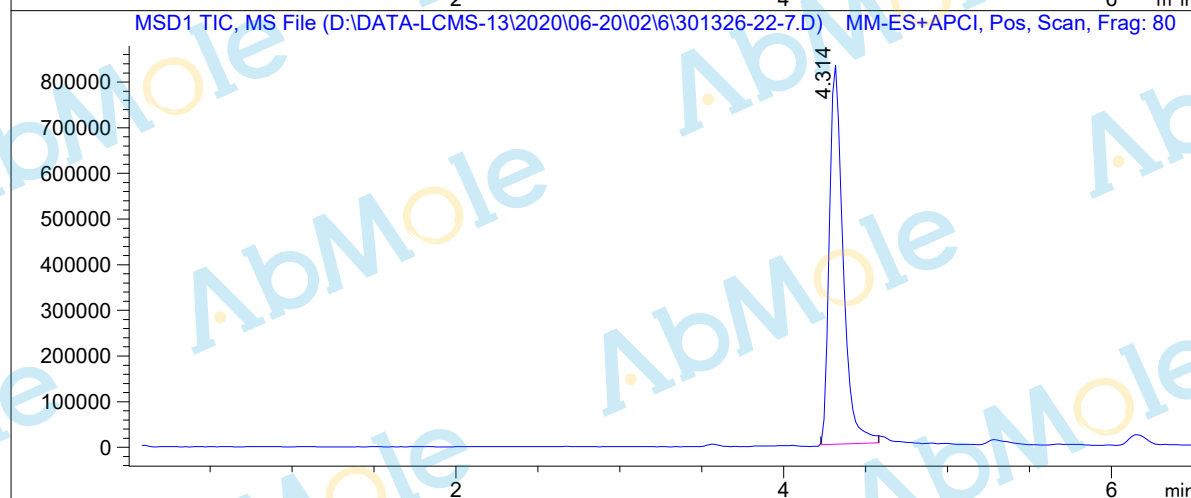
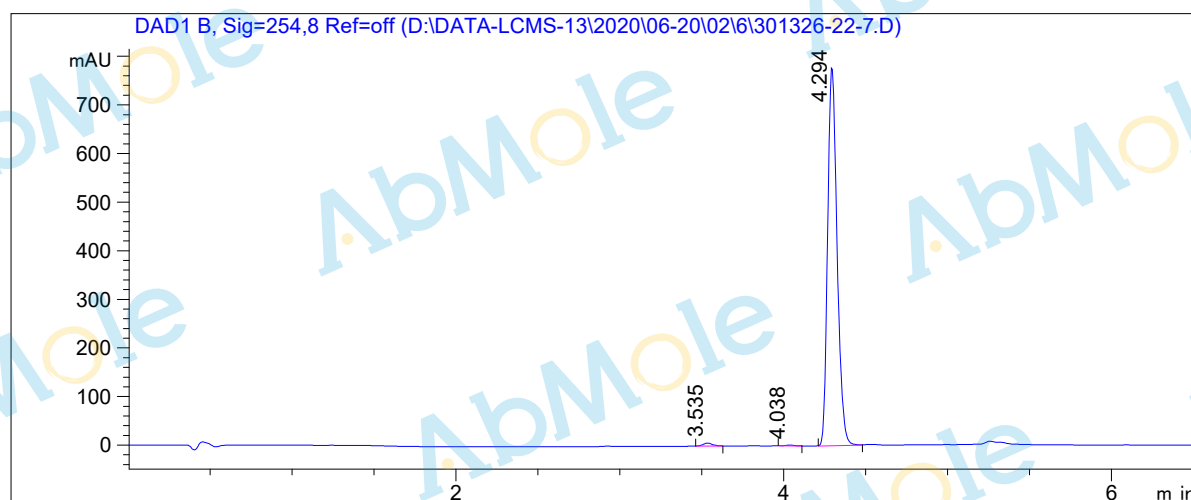


LCMS Report

Sample Name : CH-223191-01
Data File : D:\DATA-LCMS-13\2020\06-20\02\6\301326-22-7.D
Injection Date : Tue, 2. Jun. 2020 Inj. Vol. : 5ul
Acq Operator : LCMS-13 Location : Vial 42
Acq. Method : D:\data-lcms-13\2020\06-20\02\6\P-10-95.M
Method Info. : column:Xbridge C18 5um 4.6*50mm ;mobile phase:B (ACN)
A(0.02%NH4Ac); gradient(B%)!as Acq.Method above



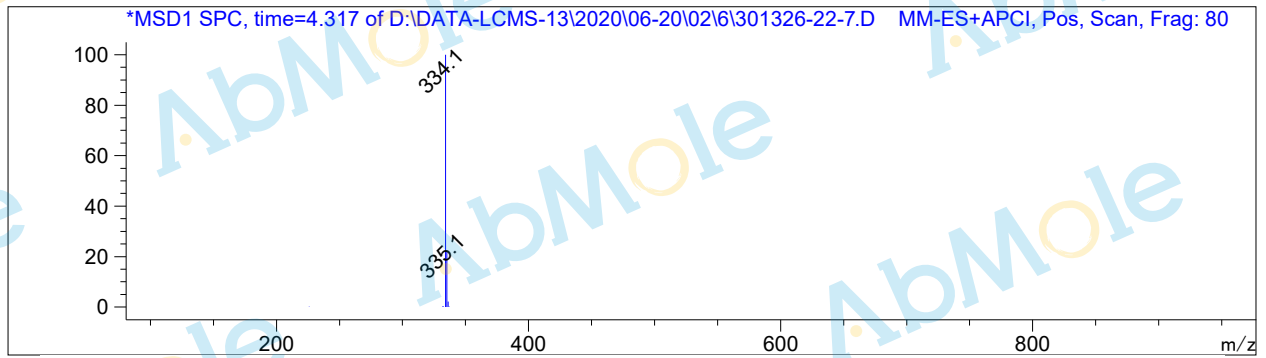
Integration Results

Signal 1: DAD1 B, Sig=254,8 Ref=off

#	R.T.	Type	Height	Height%	Width	Area	Area %
1	3.535	MF	6.331	0.799	0.070	26.516	0.838
2	4.038	MF	1.551	0.196	0.070	6.551	0.207
3	4.294	MM	784.860	99.006	0.066	3130.121	98.955

Signal 2: MSD1 TIC, MS File

#	R.T.	Type	Height	Height%	Width	Area	Area %
1	4.314	BB	832660.688	100.000	0.089	4.855e+006	100.000



*** End of Report ***