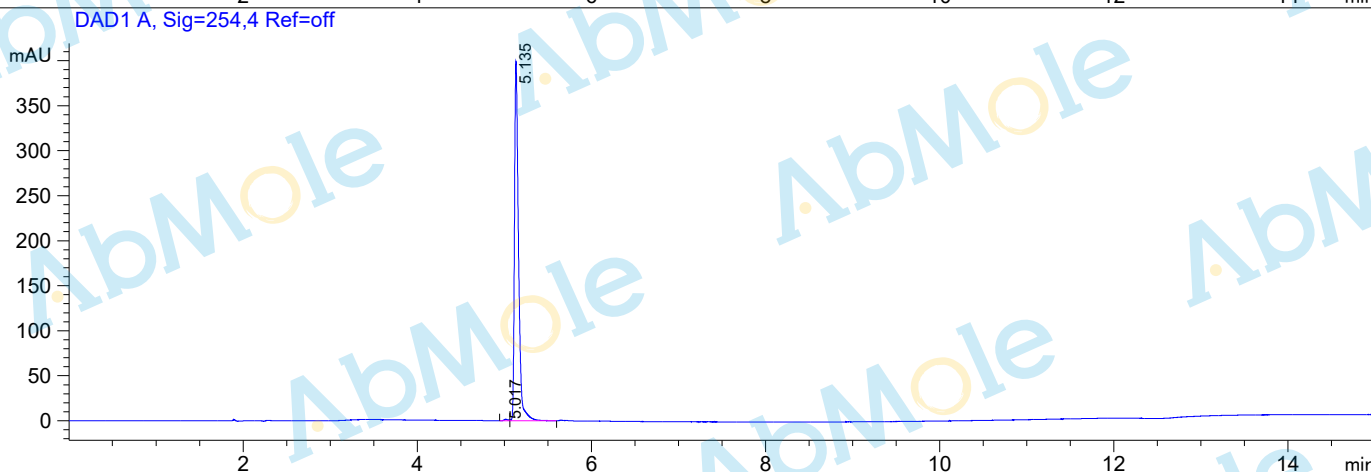
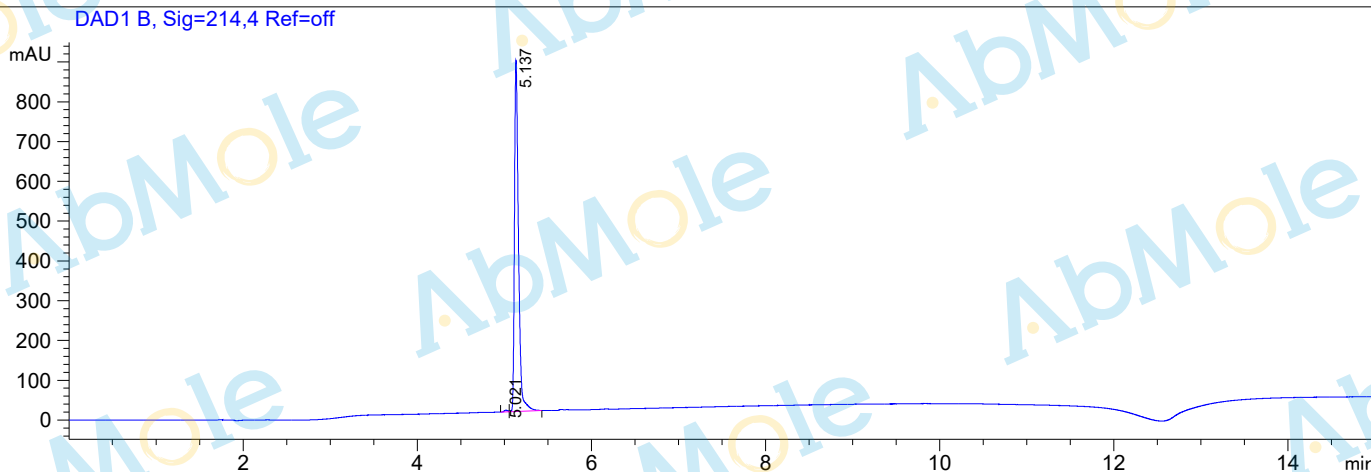


File D:\DATA\BATCCD\CGS 21680 hydrochloride-02-LCMS040.D Tgt Mass (EZX):
 Injection Date : 16-Nov-19, 20:51:19 Seq. Line : 0
 Sample Name : CGS 21680 hydrochloride-02 Location : P1-B-03
 Acq. Operator : BATCCD-P Inj : 0
 Spec. Reported : MS Integration Inj Volume : 0.5 ul
 Acq. Method : C:\Chem32\1\METHODS\HPLC-A.M
 Analysis Method : C:\CHEM32\1\METHODS\HPLC-A.M
 Sample Info : Easy-Access Method: 'HPLC-A.M'
 Method Info : Column: L-column2 ODS: 150 mm*4.6 mm*5.0 um;
 Mobile Phase: A: Water (0.05% TFA) B: ACN (0.05%TFA) ;
 Gradient: Pump1:B from 5% to 100% for 10 min and hold 100% for 5.0 min;
 Flow Rate: 1.0 mL/min;
 Column Temperature: 40



Integration Results for DAD1 B, Sig=214,4 Ref=off

RetTim	Width	Area	Height	Area%
5.02	0.05	12.69	4.20	0.45
5.14	0.05	2828.97	834.71	99.55

Integration Results for DAD1 A, Sig=254,4 Ref=off

RetTim	Width	Area	Height	Area%
5.02	0.05	5.33	1.67	0.41
5.13	0.05	1291.15	394.84	99.59