

Sample Name: CEP-37440-01

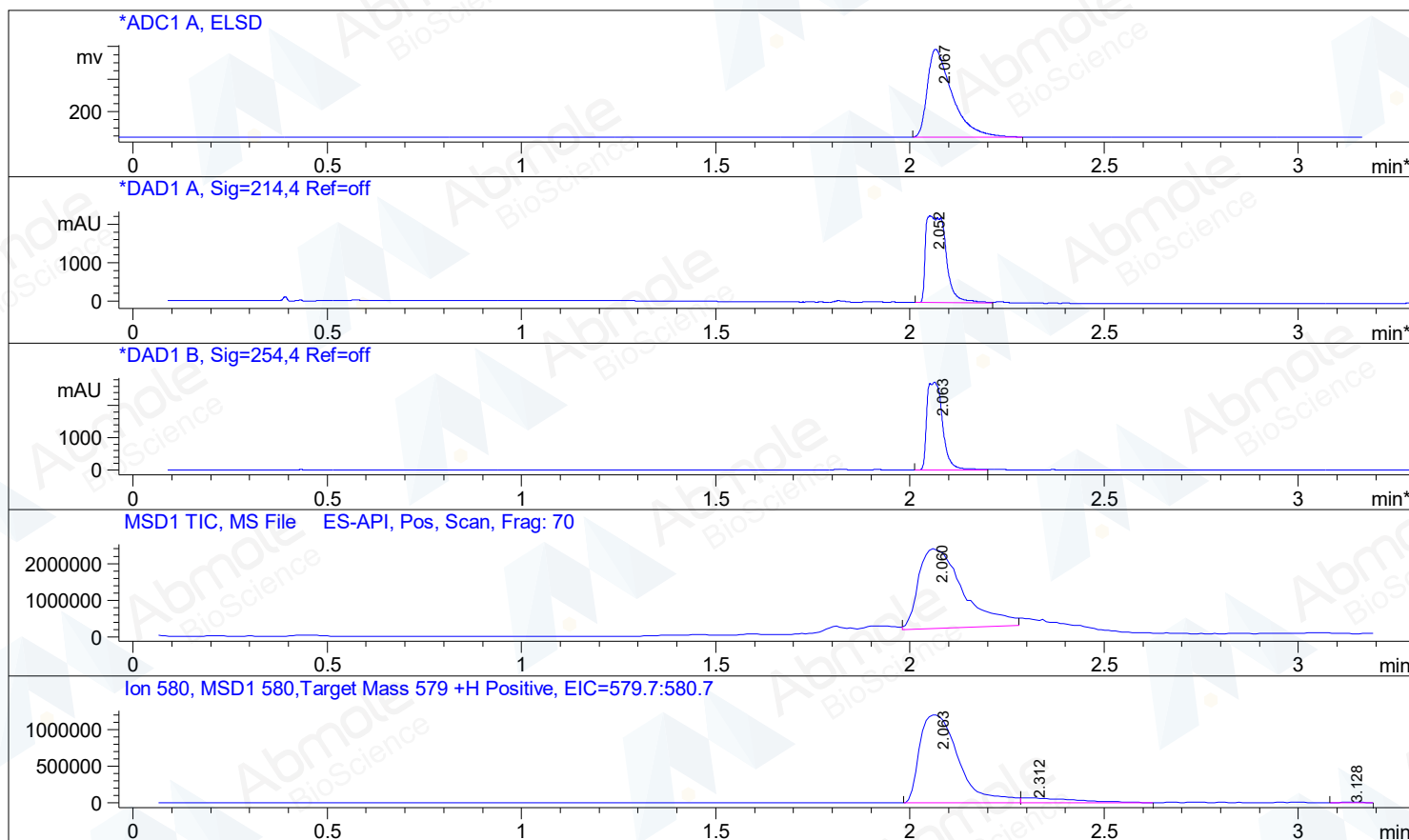
Method Info : Column:Gemini-NX 3u C18 (4.6x 50 mm, 3um)

Mobile phase: H2O(10 mmol NH4HCO3) (A) / ACN(B)

Elution program: Gradient from 10 to 95% of B in 1.5min at 1.8ml/min

Temperature: 50 °C

Detection: UV (214 , 4 nm) and MS (ESI, Pos mode ,70 to 900 amu)



Integration Results for DAD1 A, Sig=214,4 Ref=off

RetTim	Width	Area	Height	Area%
2.05	0.05	8248.56	2250.92	100.00

Integration Results for DAD1 B, Sig=254,4 Ref=off

RetTim	Width	Area	Height	Area%
2.06	0.04	7610.86	2724.59	100.00

Ret. Time: 2.06

